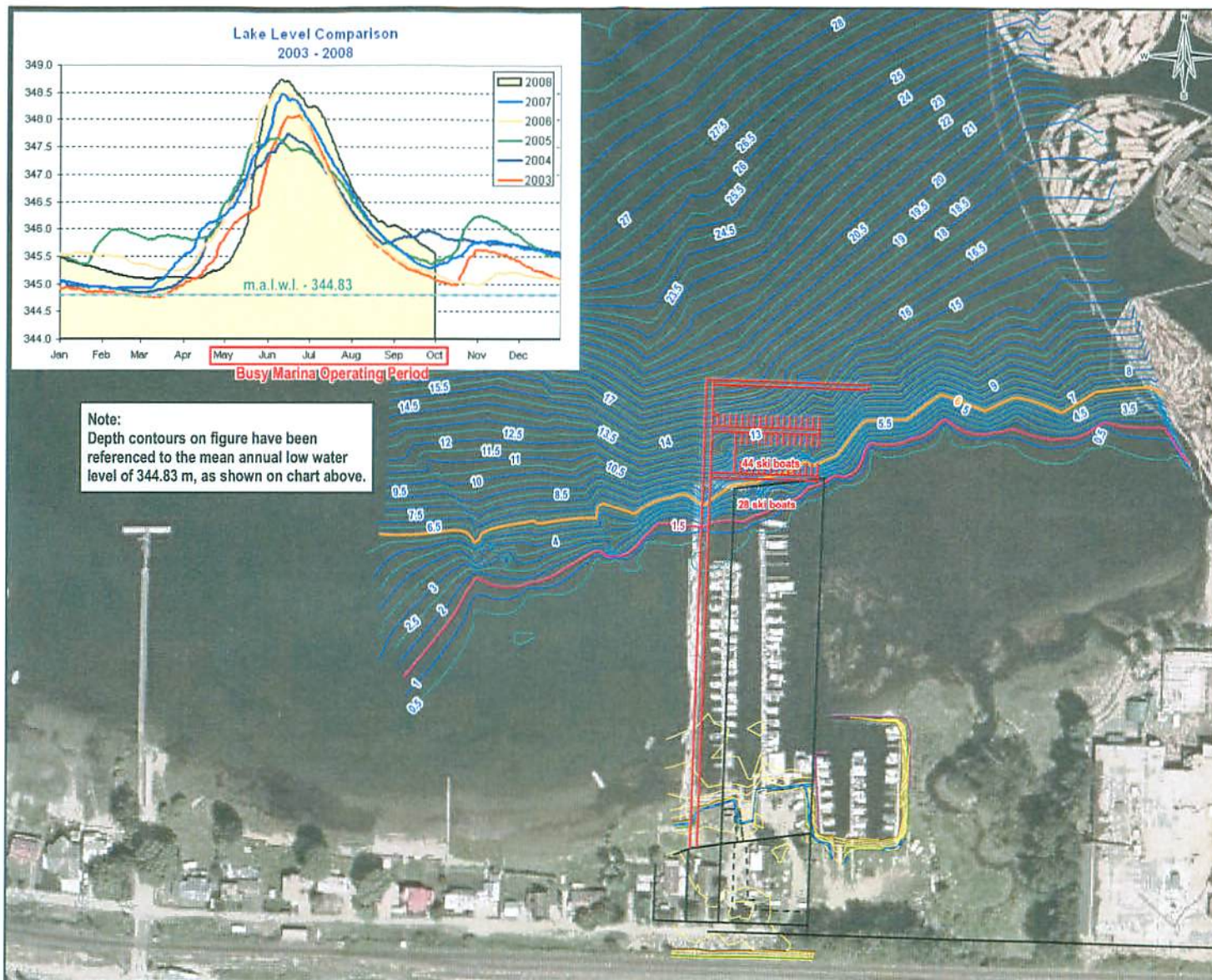


Note:
Depth contours on figure have been referenced to the mean annual low water level of 344.83 m, as shown on chart above.



LEGEND

- 348.3m Contour (HWM)
- Legal Property Lines
- - - Right of Way
- Toe of Slope
- Top of Slope
- Contours (0.5 m Interval)
- Breakwater
- Proposed Retaining Wall
- Proposed Marina - Phase 1

Depth Contours* see note

- 1.5 m Contour
- 6 m Contour
- 0.5 m Interval
- 1 m Interval

**ISSUED
FOR USE**

Note:
Depth contours have been adjusted to the mean annual low water elevation of 344.83 m for Shuswap Lake.
Lake Level Comparison Chart (2003 - 2008) is from Shuswap Lake Watch, downloaded on October 2, 2008 from: <http://www.shuswaplakewatch.com/charts/charts.php>

Base data source:
Base survey with proposed upland features received from Browne Johnson Land Surveyors (file # 10-08site utm, march13_08, received on March 31, 2008).
Proposed marina configuration provided by the client.
(file # 10-08site UTM, March13_08WILLY.dwg, received on September 12, 2008)
Orthophoto and base data authorized for use by the Province of British Columbia under the digital data use agreement.

ENVIRONMENTAL IMPACT ASSESSMENT OF PROPOSED MARINA EXPANSION, CANOE, BC

Proposed Marina Plan on Orthophoto

PROJECTION
UTM Zone 11

DATUM
NAD83

Scale 1:2,000
20 10 0 20 40 60
Meters

FILE NO.
Figure 3 - Proposed Marina Plan.mxd

PROJECT NO.
K23101091 001

DWN
SB

CKD
DA

REV
10

OFFICE
EBA-KELCOWNA

DATE
December 18, 2008

EBA Engineering
Consultants Ltd. **eba**

Figure 3