

Proponent: Valisa Energy Inc.
Description: Unsurveyed Crown Land all of Kamloops Division Yale District
Location: North of Blue River on Bone Creek

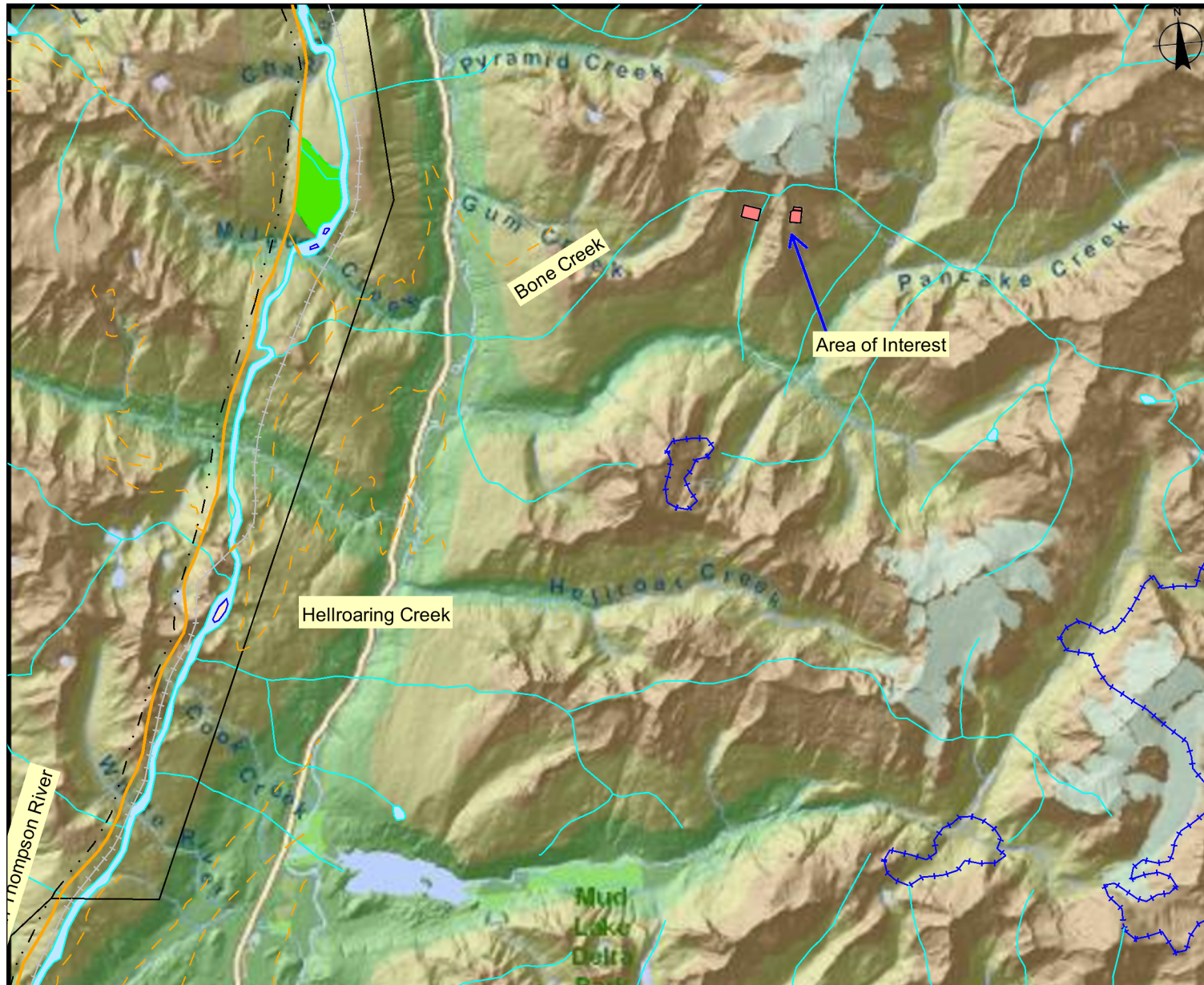
General Site Map

Submitting Agency:
 ILMB
 File #: 3412175

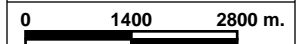
Date: February 8, 2010

Legend

- Valisa
- ILMB Boundaries - Outlined
- Municipalities - Tantalus - Outlined
- Parks and Protected Areas - Outline
- National Parks - Colour Filled
- Indian Reserves - Colour Filled



Mapsheet #: 83D025



Scale: 1:100,000

NOTE:

Map produced using IMap BC on-line.
 FOR GENERAL REFERENCE ONLY.
 The accuracy and completeness of the information on this map is not guaranteed. Not for navigational purposes.

Datum/Projection: NAD83, Albers Equal Area Conic

Key Map

