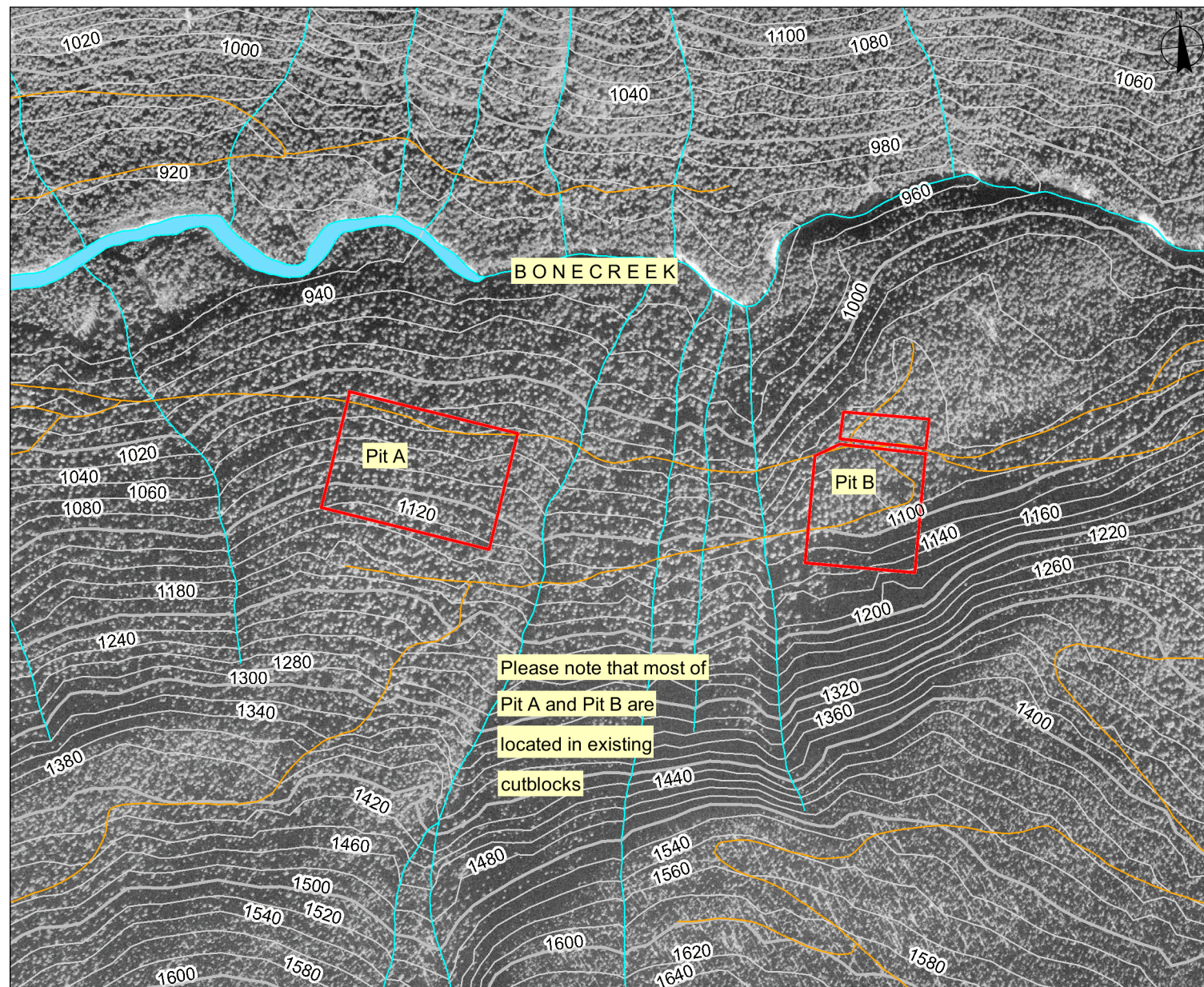


Proponent: Valisa Energy Inc.
Description: Unsurveyed Crown Land all of Kamloops Division Yale District
Location: North of Blue River on Bone Creek



Specific Site Map

Submitting Agency:
ILMB

File #: 3412175

Date: February 8, 2010

Legend

- ILMB Boundaries - Outlined
- Municipalities - Tantalus - Outlined
- Parks and Protected Areas - Outline
- National Parks - Colour Filled
- Indian Reserves - Colour Filled

Imagery Date: 2004

Mapsheet #: 83D025

0 140 280 m.

Scale: 1:10,000

NOTE:

Map produced using iMap BC on-line.

FOR GENERAL REFERENCE ONLY.
The accuracy and completeness of the information on this map is not guaranteed. Not for navigational purposes.

Datum/Projection: NAD83, Albers Equal Area Conic

Key Map

