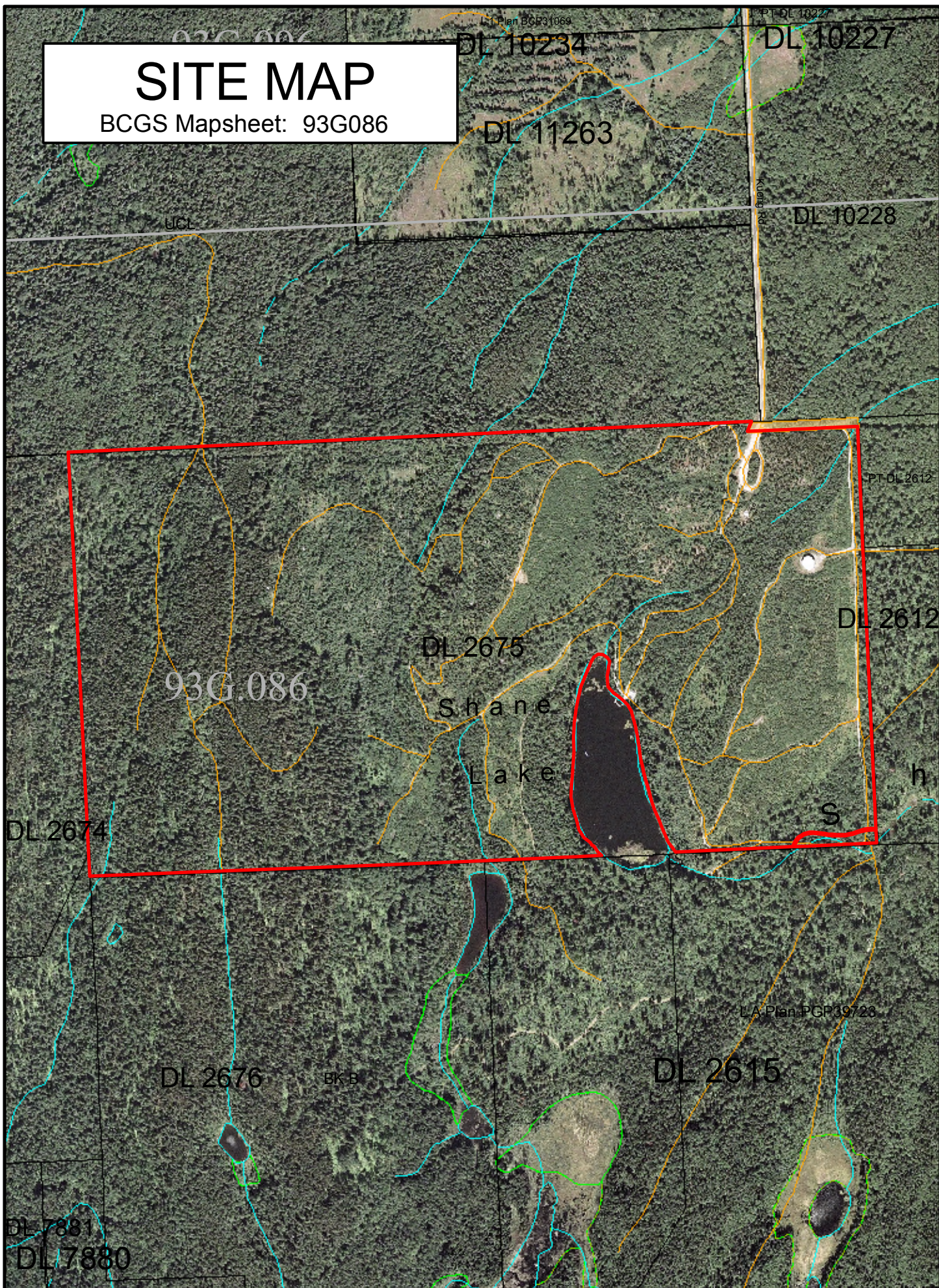


SITE MAP

BCGS Mapsheet: 93G086



File Number: 7405273

Site # 1 of 1 - APPLICATION

Area = 133.89 Ha.

TYPE: CROWN GRANT

PURPOSE: INSTITUTIONAL

SUBTYPE: FREE CROWN GRANT

SUBPURPOSE: LOCAL/REGIONAL PARK

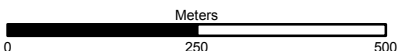
LOCATION: CRANBROOK HILL

Produced by
Ministry of Natural Resource Operations
Northern Service Centre
FrontCounterBC
Date: March 13, 2012

Scale: 1:10,000 *

* if printed on 8.5X14 page

Projection: BC Albers
Datum: NAD 83



Legend

- | | |
|-------------------------|------------------------------|
| Crown Land Application | Rapids |
| Primary Survey Parcel | River or Stream - Definite |
| Subdivision | River or Stream - Dry |
| Integrated Cadastre | River or Stream - Indefinite |
| Surveyed Rights of Way | Dam - section Base |
| Transportation Corridor | Flooded Land - Inundated |
| Provincial Park | Lake - Definite |
| Protected Area | Lake - Indefinite |
| OIC Ecological Reserve | Lake - Intermittent |
| Recreation Area | Reservoir - Definite |
| Airfield | Glacier/Icefield |
| Road | Island - Definite |
| Forest Service Road | Sand Bar |
| Road Permit | Contour - 20m interval |
| Trail | |
| Rail Line | |

All measurements are approximate.