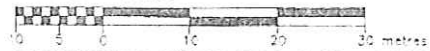


MARKED-UP SURVEY PLAN

REFERENCE PLAN SHEWING STATUTORY RIGHT OF WAY  
OVER PART OF LOT 4, DL 207, SDYD, PLAN KAP \_\_\_\_\_

BCGS 82E.053  
SCALE 1:500

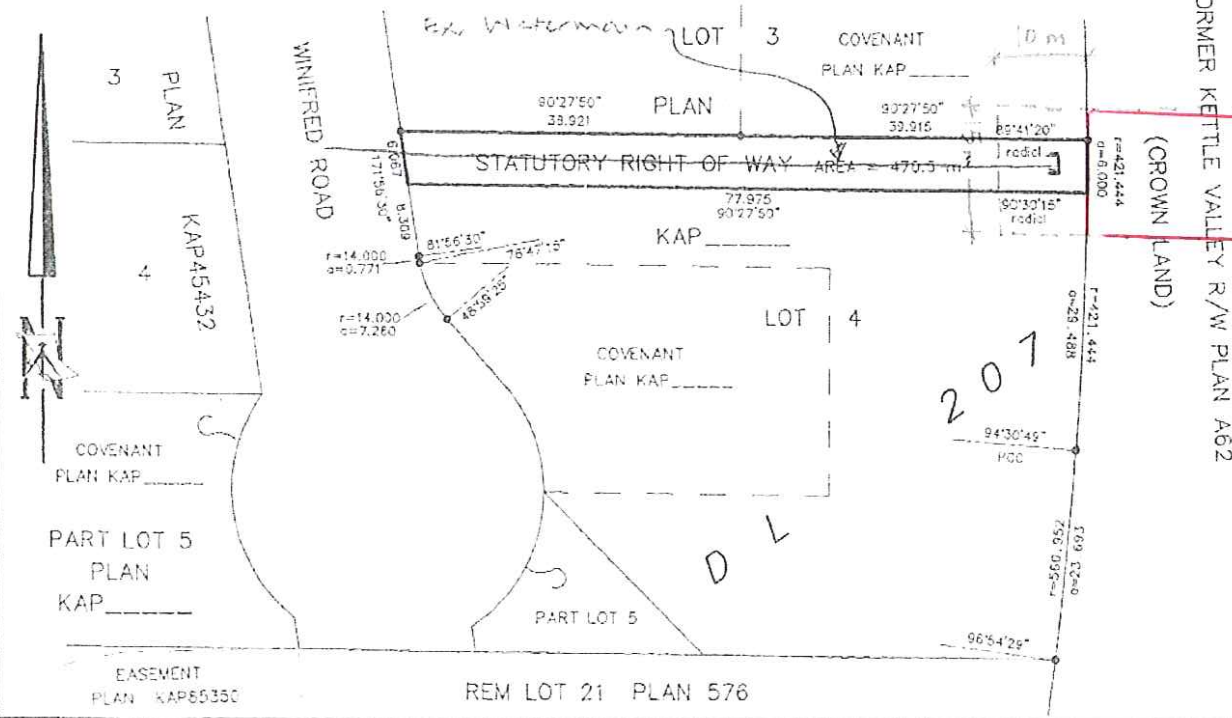


THE INTENDED PLOT SIZE OF THIS PLAN IS 432mm IN WIDTH BY  
280mm IN HEIGHT (B SIZE) WHEN PLOTTED AT A SCALE OF 1:500

PURSUANT TO SECTION 99(1)(e), LAND TITLE ACT  
AREA REQUIRED FOR STATUTORY RIGHT OF WAY - 470.5 m<sup>2</sup>

PLAN KAP \_\_\_\_\_

DEPOSITED IN THE LAND TITLE OFFICE AT KAMLOOPS, B.C.  
THIS \_\_\_\_\_ DAY OF \_\_\_\_\_ 2009



LEGEND

BEARINGS ARE ASTRONOMIC AND DERIVED FROM PLAN KAP \_\_\_\_\_  
● STANDARD IRON POST FOUND

THIS PLAN LIES WITHIN THE OKANAGAN SIMIKAVEEN  
REGIONAL DISTRICT

I, STEVEN J. BUZIKIEWICH, A BRITISH COLUMBIA LAND SURVEYOR  
OF THE CITY OF PENTICTON IN BRITISH COLUMBIA, CERTIFY  
THAT I WAS PRESENT AT AND PERSONALLY SUPERINTENDED THE  
SURVEY REPRESENTED BY THIS PLAN, AND THAT THE SURVEY  
AND PLAN ARE CORRECT. THE FIELD SURVEY WAS COMPLETED  
ON THE 18th DAY OF JANUARY, 2009. THE PLAN WAS COMPLETED  
AND CHECKED, AND THE CHECKLIST FILED UNDER 92550,  
ON THE 29th DAY OF JANUARY, 2009.

*Steven J. Buzikewich*  
B.C.L.S.P.

STEVEN J. BUZIKIEWICH  
PROFESSIONAL LAND SURVEYOR  
54 NANAIMO AVE. E.  
PENTICTON, B.C.  
Phone: (250)492-0553 Fax: (250)492-9351  
FILE 07-050A FB 173 PG. 48 & 49  
CWO 07-050E

ORIGINAL