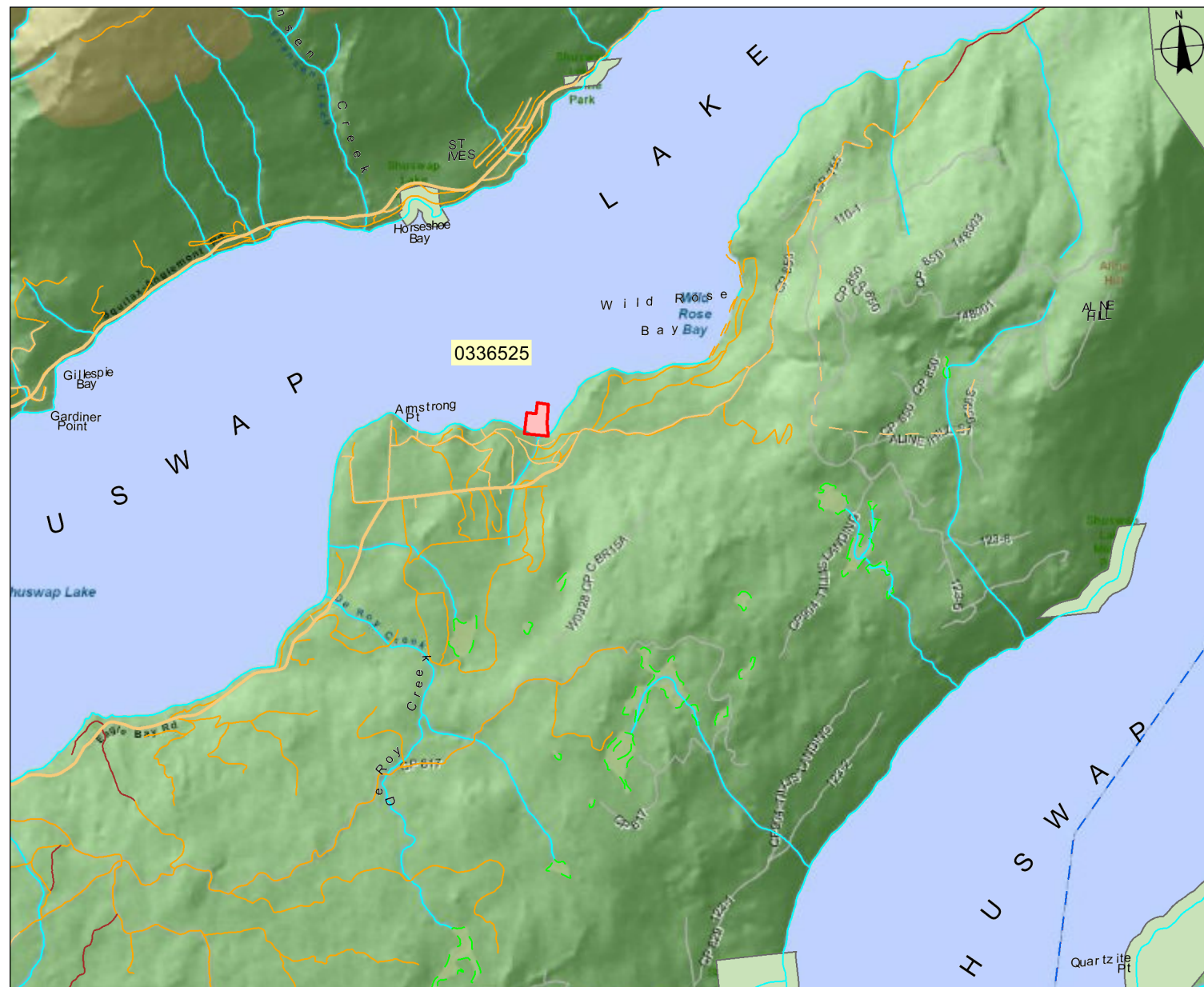


Proponent: Strata Corp. KAS1797
Description: Strata Marina
Location: Wild Rose Bay - Shuswap Lake



Location Map

Submitting Agency:

File #: 0336525

Date: June 12, 2010

Legend

- Strata
- ILMB Boundaries - Outlined
- Municipalities - Tantalus - Outlined
- Indian Reserves - Colour Filled
- Ecological Reserves - Tantalus - Colour Filled
- Recreation Areas - Tantalus - Colour Filled
- Conservancy Areas - Tantalus - Colour Filled
- Wildlife Management Areas - Tantalus - Colour Filled
- Protected Areas - Tantalus - Colour Filled
- Provincial Parks - Tantalus - Colour Filled
- National Parks - Colour Filled

Imagery Date: 2007

Mapsheet #: 82L.095

0 700 1400 m.

Scale: 1:50,000

NOTE:

Map produced using iMap BC on-line.

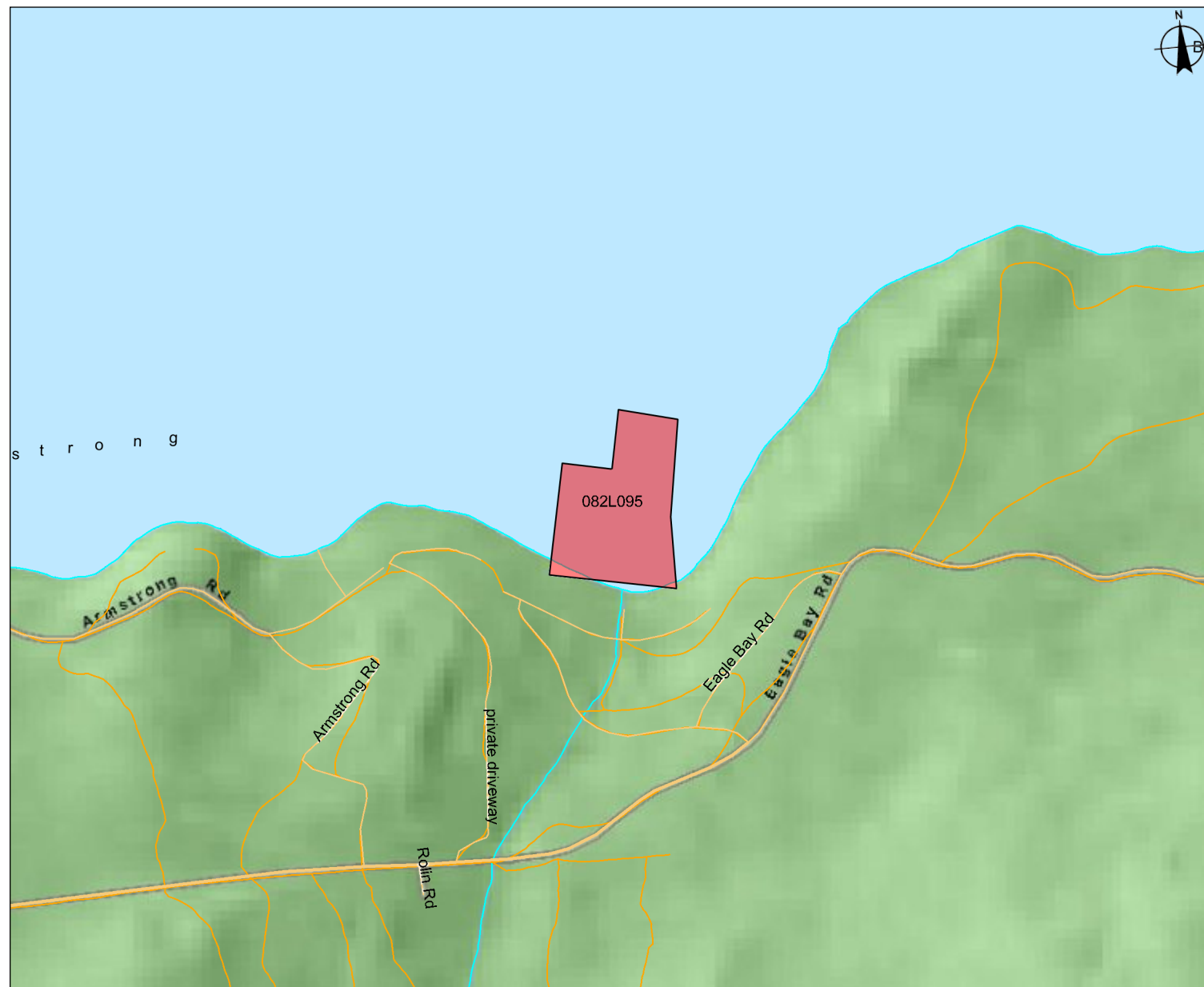
FOR GENERAL REFERENCE ONLY.
The accuracy and completeness of the information on this map is not guaranteed. Not for navigational purposes.

Datum/Projection: NAD83, Albers Equal Area Conic

Key Map



Proponent: Strata Corp. KAS1797
Description: Strata Marina
Location: Wild Rose Bay - Shuswap Lake



General Site Map

Submitting Agency:

File #: 0336525

Date: June 12, 2010

Legend

- Strata
- Mapsheet Grid (1:20,000)
- ILMB Boundaries - Outlined
- Municipalities - Tantalus - Outlined
- Indian Reserves - Colour Filled
- Ecological Reserves - Tantalus - Colour Filled
- Recreation Areas - Tantalus - Colour Filled
- Conservancy Areas - Tantalus - Colour Filled
- Wildlife Management Areas - Tantalus - Colour Filled
- Protected Areas - Tantalus - Colour Filled
- Provincial Parks - Tantalus - Colour Filled
- National Parks - Colour Filled

Mapsheet #: 82L.095

0 130 260 m.

Scale: 1:9,364

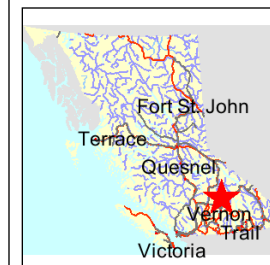
NOTE:

Map produced using iMap BC on-line.

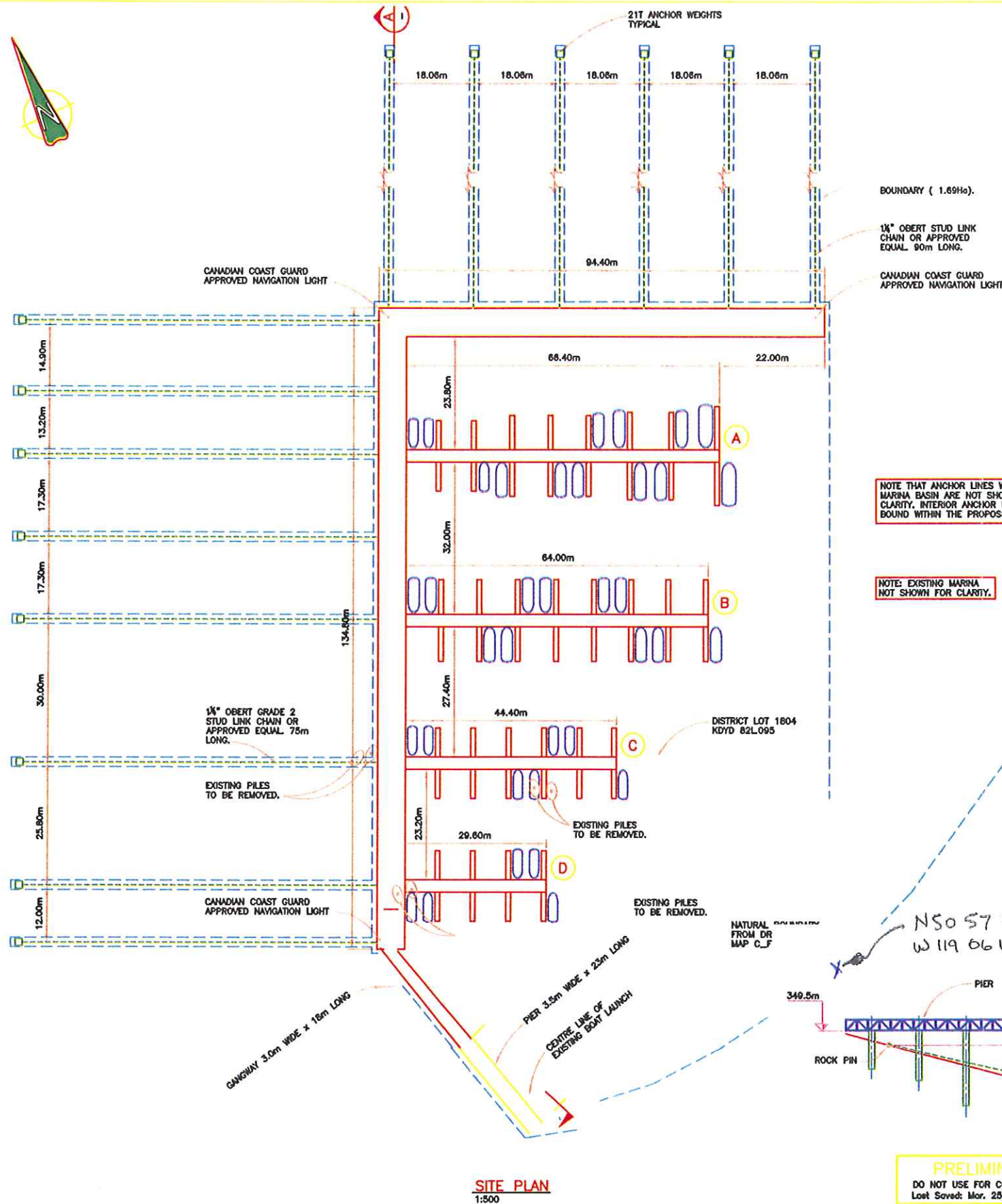
FOR GENERAL REFERENCE ONLY.
The accuracy and completeness of the information on this map is not guaranteed. Not for navigational purposes.

Datum/Projection: NAD83, Albers Equal Area Conic

Key Map



Plotters: C:\polder\g... as Wild Rose Bay Dock\06177-00-101_RawP1.dwg - 00-101
Last Saved: Mon, 25/10 11:10am Plotted: Mon, 25/10



SITE PLAN
1:500

PRELIMINARY
DO NOT USE FOR CONSTRUCTION
Last Saved: Mon, 25/10 11:10am

SECTION A
1:250

GENERAL NOTES

- FOR GENERAL NOTES SEE DWG. 06177/00-100

DESIGN CRITERIA

- THE 1 IN 30 YEAR DESIGN WIND SPEED FROM ALL DIRECTIONS IS 85.0 KPH. ALL WIND SPEEDS HAVE BEEN SCALED TO THE NATIONAL BUILDING CODE (NBC-2005).
- THE 1 IN 30YR WIND GENERATED SIGNIFICANT WAVE HEIGHT (HS) AND PEAK SPECTRAL WAVE PERIOD (TP) ARE GIVEN IN THE FOLLOWING TABLE.

WIND DIRECTION	WIND SPEED (KPH)	WAVE LENGTH (KM)	HS (m)	TP (s)
N	85	2.0	0.81	2.6
NE	85	7.9	1.20	3.7
NW	85	2.5	0.81	2.6

THE SIGNIFICANT WAVE HEIGHT IS DEFINED AS THE AVERAGE OF THE HIGHEST 33% OF THE WAVES, WHERE THE WAVE HEIGHT IS THE VERTICAL DISTANCE FROM THE TROUGH TO THE CREST OF THE WAVE. TP IS DEFINED AS THE PERIOD OF THE MOST ENERGETIC WAVES IN THE SEA STATE, WHERE WAVE PERIOD IS DEFINED AS THE TIME BETWEEN SUCCESSIVE WAVE CRESTS AT A STATIONARY POINT. BREAKWATERS ARE DESIGNED FOR THE MAXIMUM WAVE HEIGHT $H_{max}=2H_S$

- WAVE HEIGHTS ARE CALCULATED USING THE METHODS IN THE US ARMY CORPS OF ENGINEERS, (USACE) "SHORE PROTECTION MANUAL" (SPM), 1984 EDITION.
- THE FAIRWAY WIDTH AND HARBOUR CLASSIFICATION WERE DETERMINED USING THE RECOMMENDATIONS IN THE SMALL CRAFT HARBOURS (SCH), FISHERIES AND OCEANS, CANADA "GUIDELINES OF HARBOUR ACCOMMODATION", APRIL 1985.
- THE HARBOUR IS CLASSIFIED AS A CLASS A MARINA BY SCH, FOR WHICH THE ALLOWABLE WAVE HEIGHT IS 0.25m IN THE BASIN AREA WHICH CAN BE EXCEEDED 0.17% OF THE TIME.
- THE DESIGN BOAT MIX DATA IS PROVIDED IN THE TABLE.

TABLE 1 BOAT MIX

BOAT LENGTH	PERCENTAGE OF TOTAL BOATS ACCOMMODATED	TOTAL BOATS
7.3m (24')	100%	112
TOTALS	100%	112

- THE DOUBLE BERTH WIDTH AND FINGER LENGTHS ARE FROM TOBIASSON AND KOLLMAYER, MARINA DESIGN 2000 AND ARE GIVEN IN TABLE 2.

TABLE 2 BERTH CRITERIA

BOAT LENGTH	WIDTH BETWEEN FINGER FOR DOUBLE BERTHS	LENGTHS OF BERTHS
6.1m (20')	6.4m	7.0m
7.3m (24')	7.3m	8.2m
7.9m (26')	7.9m	8.8m
9.1m (30')	8.8m	10.1m

FAIRWAY WIDTH = 1.5 x LENGTH OF BOAT
NOTE: SINGLE BERTH WIDTH IS EQUAL TO DOUBLE BERTH WIDTH/2

- FLOAT DESIGNATIONS: BOAT LENGTHS, NUMBER OF FINGERS AND FINGER LENGTHS ARE SHOWN IN TABLE 3;

TABLE 3 FLOAT SIZES FOR VESSEL LENGTHS 99m

FLOAT	BOAT LENGTH	No. OF FINGERS	FINGER LENGTH
A	9.1m (30')	2	9.1m
	7.9m (26')	4	7.9m
	7.3m (24')	6	7.3m
	6.1m (20')	4	6.1m
B	7.3m (24')	16	7.3m
C	6.1m (20')	12	6.1m
D	6.1m (20')	8	6.1m

NOTE: ALL FINGER FLOATS ARE 1.0m WIDE
ALL WALKWAY FLOATS ARE 2.6m WIDE

CLIENT

WILD ROSE STRATA CORPORATION

PROJECT

WILD ROSE MARINA

Westmar
Consulting Engineers

TITLE

SITE LAYOUT

DRAWING SCALE

SHOWN

PROJECT NUMBER

06177

DRAWING NUMBER

00-101

REV.

P1

DRAWING No.

REFERENCE DRAWINGS

No. DATE

DESCRIPTION

ISSUE / REVISIONS

DRAWN CHK'D DESIGN CHK'D APP'D

No. DATE

DESCRIPTION

ISSUE / REVISIONS

P1 DEC19/06 ISSUED FOR ENVIRONMENT REPORT

AC HAM NFA

DRAWN CHK'D DESIGN CHK'D APP'D