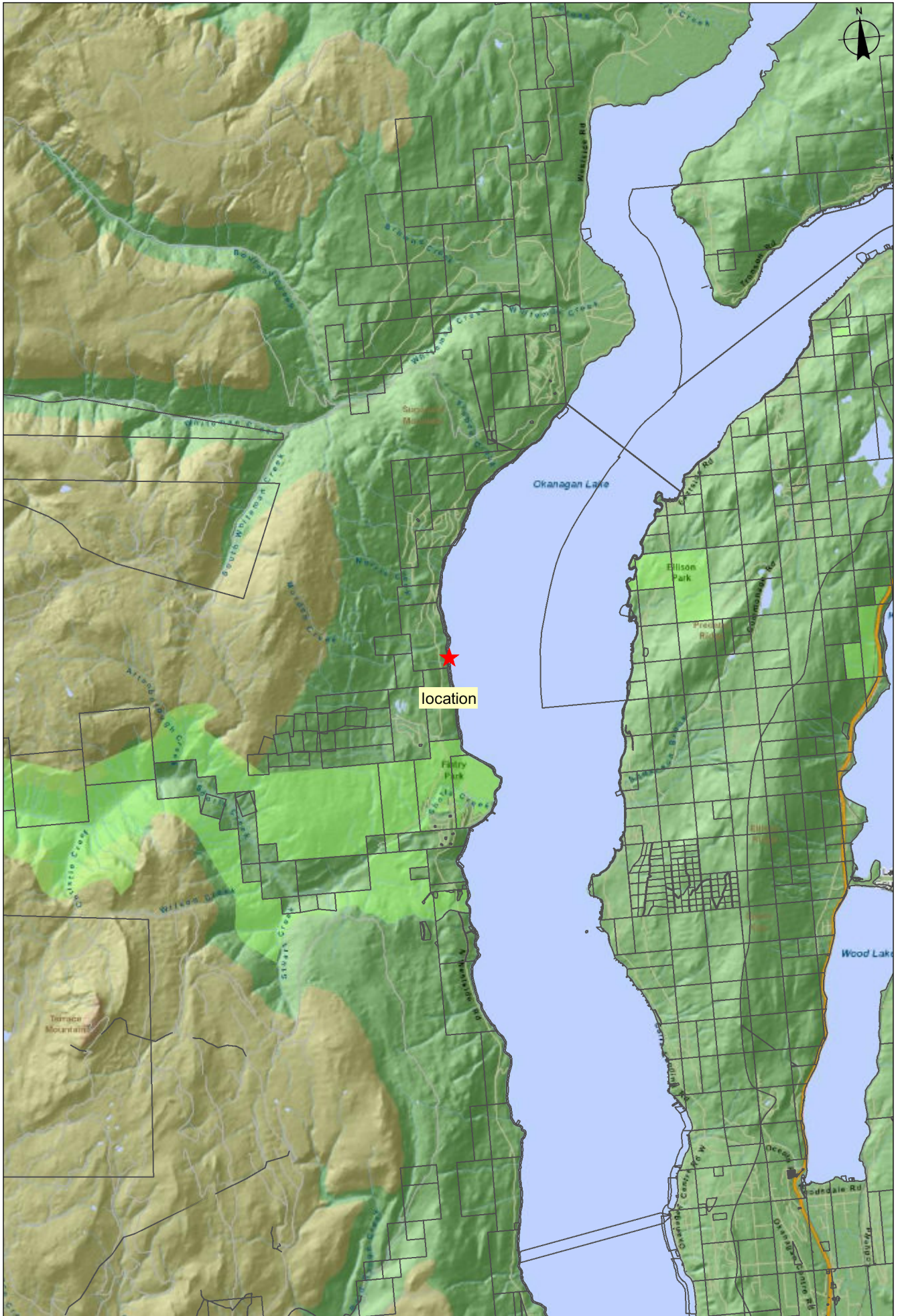


Proponent: Jean Claude Beauvilain Jean Claude et al
Description: Existing dock
Location: Okanagan Lake

General Site Map
 Submitting Agency:

File #: 3408110



- Legend**
- Crown Tenures by Purpose - Outlined
 - Primary Survey Parcels - Outlined
 - Land Act Subdivisions - Outlined

Imagery Date: July 13, 2010
 Mapsheet #: 82L.013

Date: July 14, 2010

0 1500 3000 m.

Scale: 1:112,610

Datum/Projection: NAD83, Albers Equal Area Conic

Key Map

