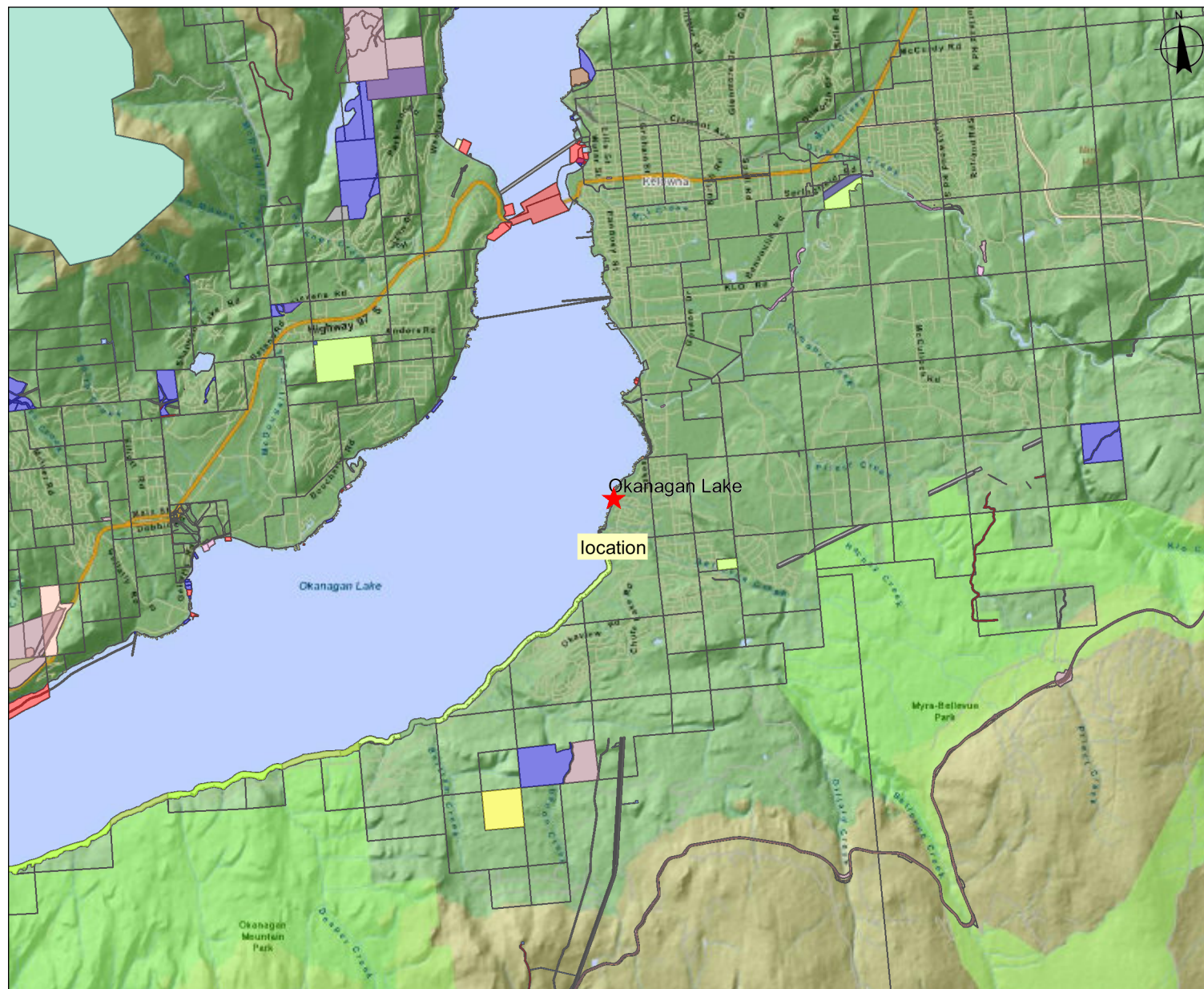


Proponent: Kevin Carson
Description: Extending an existing dock
Location: 4430 Hobson Road on Okanagan lake



General Site Map

Submitting Agency:

File #: 3402724

Date: August 25, 2010

Legend

Crown Tenures by Purpose - Colour Themed

- Agriculture
- Alpine Skiing
- Aquaculture
- Commercial
- Commercial Recreation
- Communication
- Community
- Energy Production
- Environment Conservation and Recr
- First Nations
- Industrial
- Institutional
- Miscellaneous Land Uses
- Pre-Tantals
- Quarrying
- Residential
- Transportation
- Utility
- Waterpower
- Others

Crown Tenures by Purpose - Outlined

- Primary Survey Parcels - Outlined

Mapsheet #: 82e.085

0 1.75 3.5 km.

Scale: 1:123,852

NOTE:

Map produced using iMap BC on-line.

FOR GENERAL REFERENCE ONLY.
The accuracy and completeness of the information on this map is not guaranteed. Not for navigational purposes.

Datum/Projection: NAD83, Albers Equal Area Conic

Key Map

