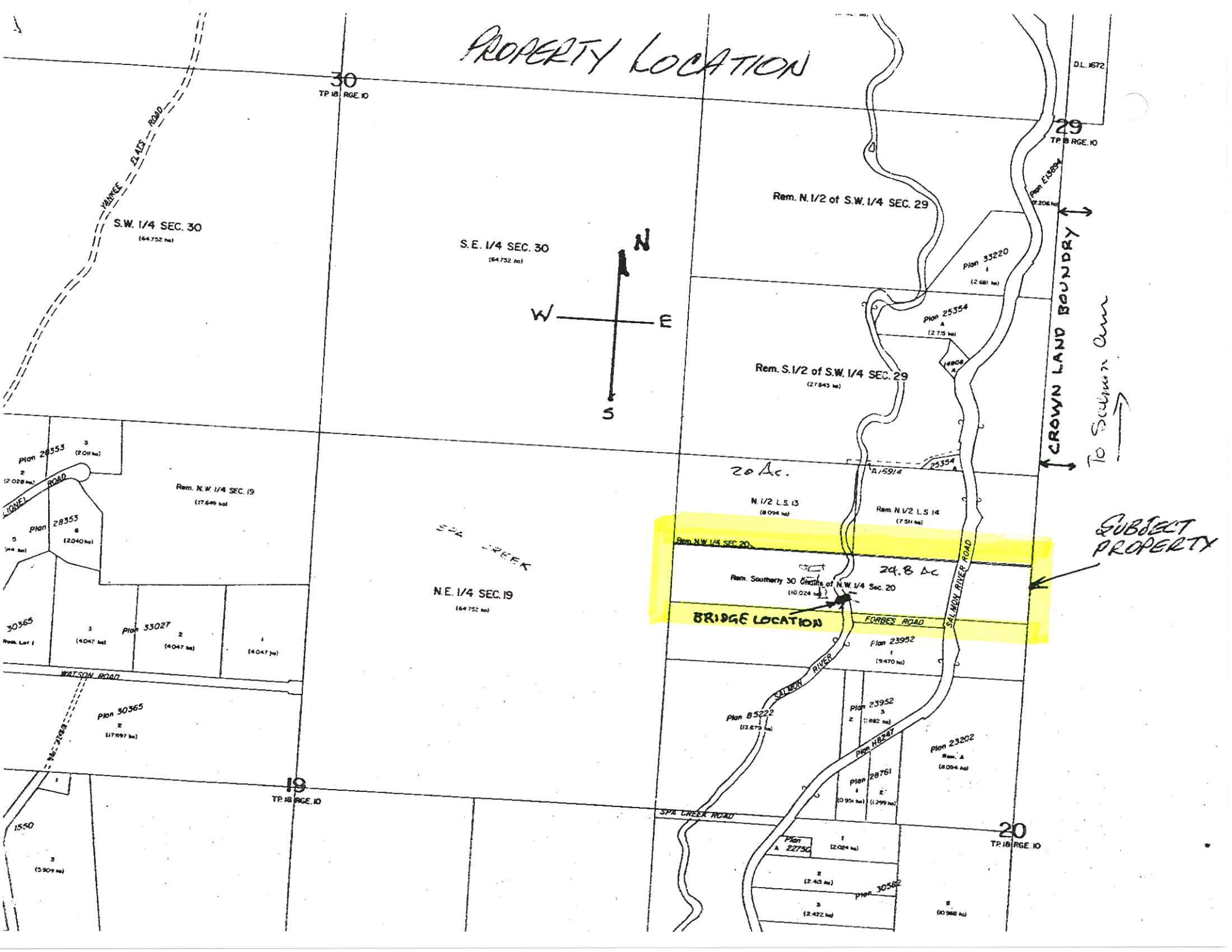


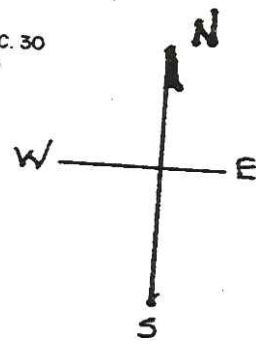
PROPERTY LOCATION



30
TP 18 RGE. 10

29
TP 18 RGE. 10

20
TP 18 RGE. 10



CROWN LAND BOUNDARY
To Salmon Arm

SUBJECT PROPERTY

BRIDGE LOCATION

S.E. 1/4 SEC. 30
(64.732 ac)

Rem. N. 1/2 of S.W. 1/4 SEC. 29

Rem. S. 1/2 of S.W. 1/4 SEC. 29
(27.843 ac)

Rem. N.W. 1/4 SEC. 19
(17.649 ac)

N.E. 1/4 SEC. 19
(64.732 ac)

N. 1/2 L.S. 13
(8.094 ac)

Rem. N. 1/2 L.S. 14
(7.511 ac)

Rem. Southernly 30' Width of N.W. 1/4 Sec. 20
(10.024 ac)

Plan 23952
1
(9.470 ac)

Plan B 5222
1
(3.675 ac)

Plan 23952
2
(1.082 ac)

Plan 23202
Rem. A
(8.094 ac)

Plan 28761
1
(3.934 ac)

Plan A 22730
1
(2.024 ac)

2
(2.40 ac)

3
(2.472 ac)

5
(0.988 ac)

S.W. 1/4 SEC. 30
(64.732 ac)

Plan 28553
3
(2.011 ac)

Plan 28353
6
(2.040 ac)

30365
Rev. Lot 1
(4.047 ac)

Plan 33027
2
(4.047 ac)

Plan 30365
2
(17.897 ac)

1550
3
(3.909 ac)

Plan 30582
1
(2.40 ac)

DL 1672

Plan E 3884
1
(7.206 ac)

Plan 33220
1
(2.681 ac)

Plan 25354
A
(2.735 ac)

4800
A

15914
25354

FORBES ROAD

SALMON RIVER ROAD

SPA CREEK ROAD

WATSON ROAD

JONES ROAD

WATSON ROAD

18-21628

SPA CREEK

SALMON RIVER