

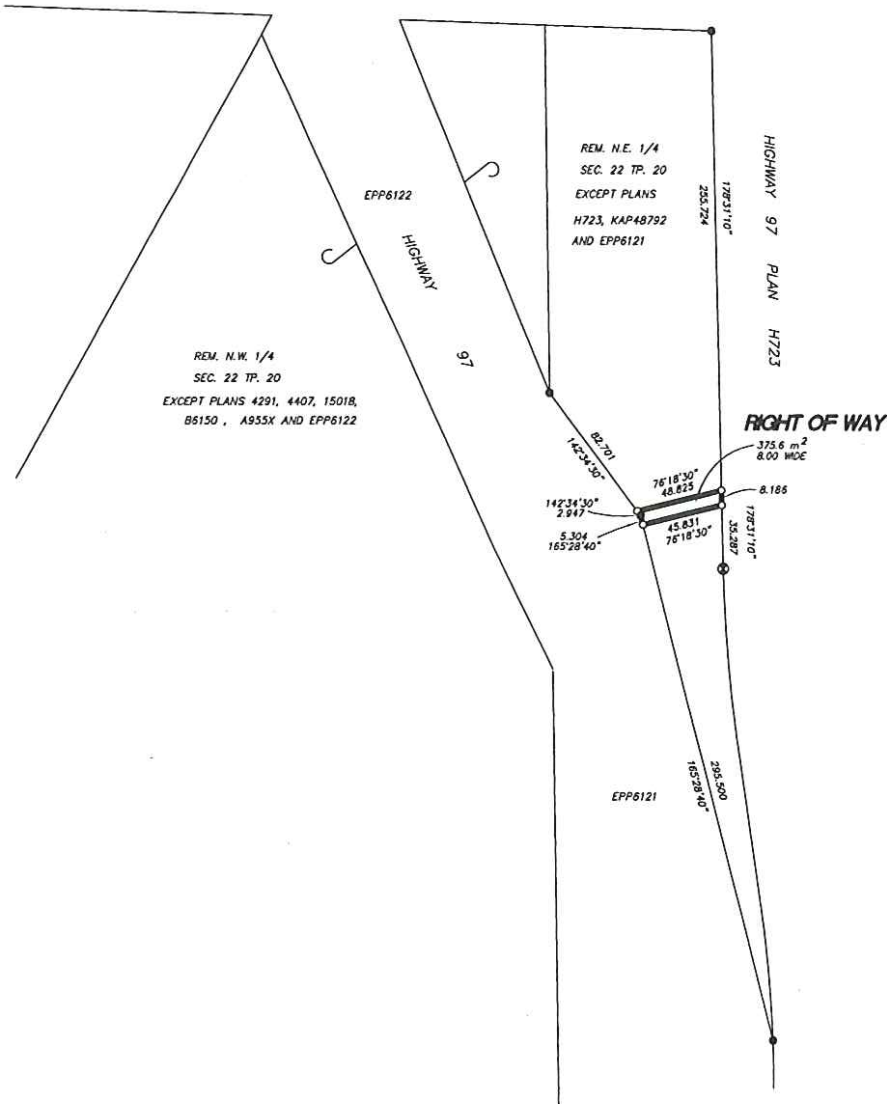
**REFERENCE PLAN OF STATUTORY RIGHT OF WAY IN THE
NORTHEAST 1/4 OF SEC. 22 TP. 20 ODYD
EXCEPT PLANS H723, KAP48792 AND EPP6121**

PLAN EPP6446

PURSUANT TO SECTION 99(1)(e) OF THE LAND TITLE ACT



The intended size of this plan is 432 mm in width by 560 mm in height (C size) when plotted at a scale of 1:2000



All distances are in metres.

- Iron Post Found
- Iron Post Set
- ⊙ Standard Capped Iron Post Found

Grid bearings are derived from Plan EPP6121.

This plan shows horizontal ground-level distances.

This plan lies within the Central Okanagan
Regional District.

The field survey represented by this plan was completed by
Douglas A. Goddard on the 15th day of March, 2010.

FILE 15075-1RW

D.A. Goddard Land Surveying Inc.
103-1358 ST. PAUL STREET KELOWNA PHONE 763-3733