

Proponent: Josh Murray Neugebaur
 Description: Roadway
 Location: 10 km from Peachland

General Site Map

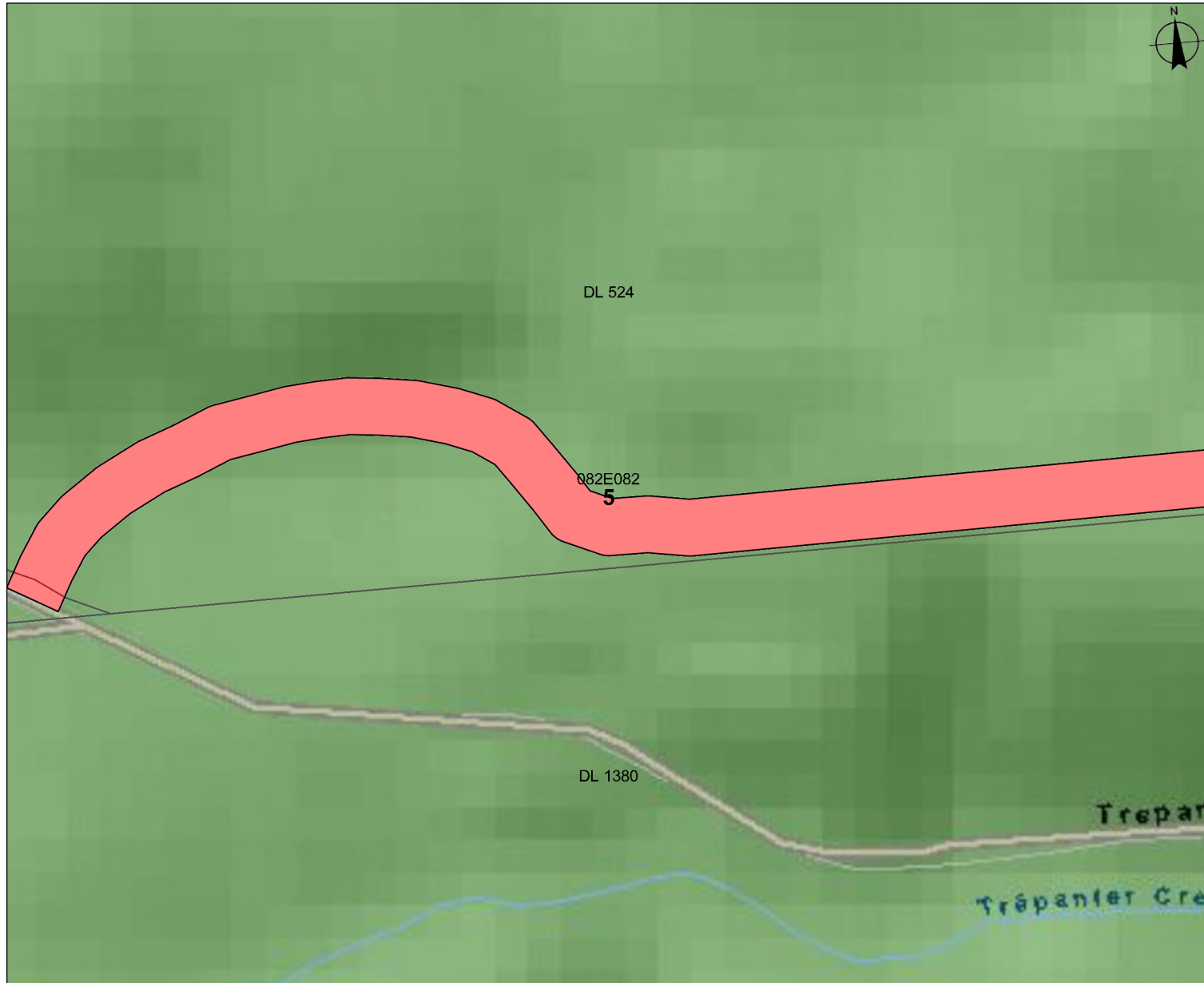
Submitting Agency:

File #: 3412330

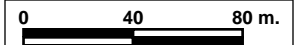
Date: October 18, 2010

Legend

-  Agricultural Land Reserves - Lines
 -  Agricultural Land Reserves - Colour Filled
 -  District Boundaries - Ministry of Transportation - Outlined
 -  District Boundaries - Ministry of Transportation - Outlined
- First Nations Traditional Use Study Areas**
-  Allied Tsimshian Tribes
 -  Bonaparte
 -  Canim Lake Band
 -  Canoe Creek Band
 -  Eketemc First Nation (Alkali Lake Indian Band)
 -  Gitanyow Band Council
 -  Haisla Nation TUS
 -  Homalco First Nation
 -  Hul'qum'num Treaty Group
 -  Hupacasath First Nation
 -  Huu ay aht First Nation
 -  Inshuck'ch and Nquatqua
 -  Ka:'yu:'k'ih'Che:k'tles7et'h' First Nation
 -  Kamloops Indian Band
 -  Kaska Dena Traditional Use Study
 -  Kitasoo (Xa'xais)
 -  Kitkatla Indian Band
 -  Kitselas Indian Band



Mapsheet #: 82E.082



Scale: 1:2,760

NOTE:

Map produced using IMap BC on-line.
 FOR GENERAL REFERENCE ONLY.
 The accuracy and completeness of the information on this map is not guaranteed. Not for navigational purposes.

Datum/Projection: NAD83, Albers Equal Area Conic

Key Map

