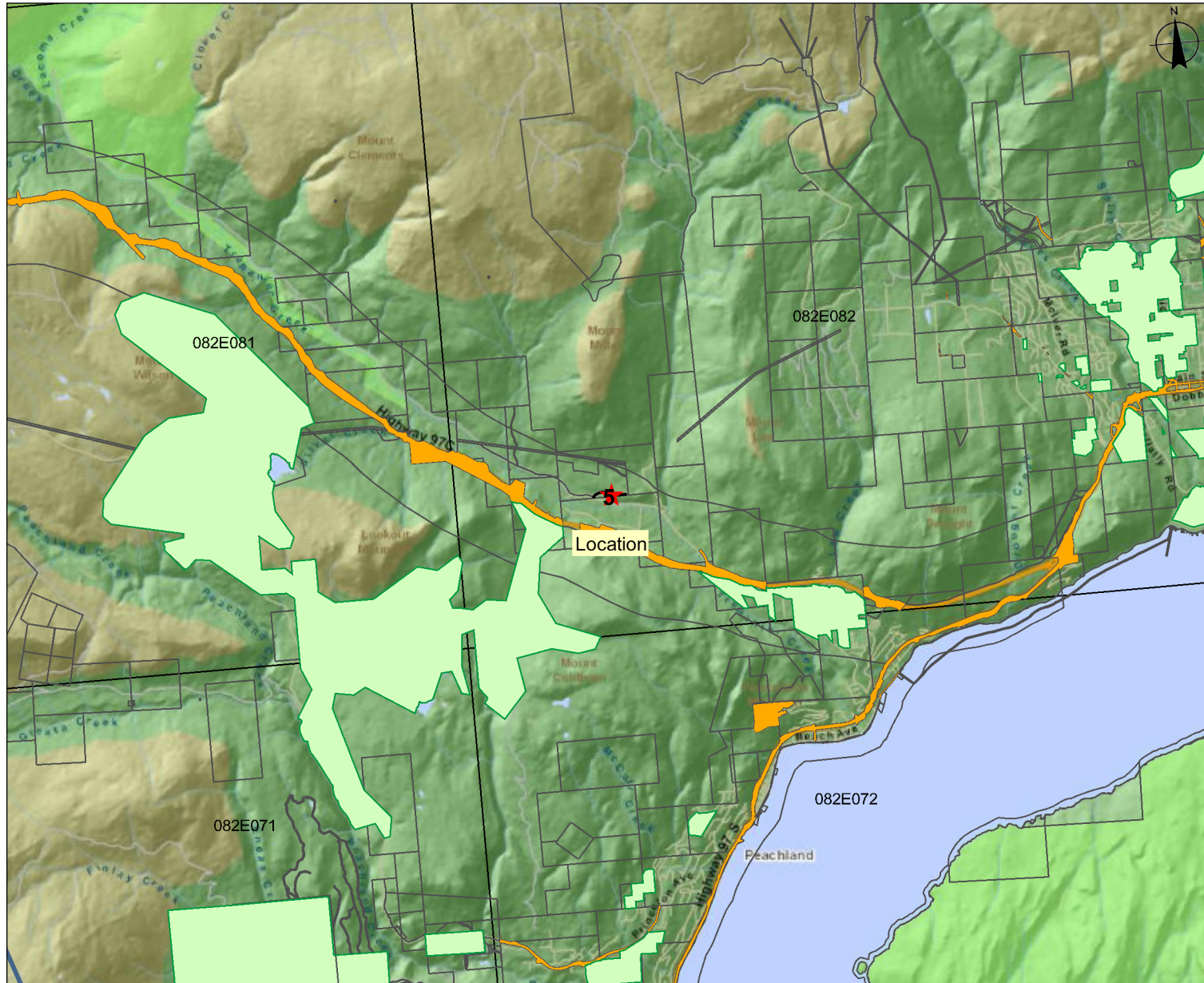


**Proponent:** Josh Neugebaur  
**Description:** Industrial Road to Greenhouses  
**Location:** 10 km from Peachland behind Trepanier Road

## Location Map

Submitting Agency:

File #: 3412330



### Legend

- Agricultural Land Reserves - Lines
  - Agricultural Land Reserves - Colour Filled
  - District Boundaries - Ministry of Transportation - Outlined
  - District Boundaries - Ministry of Transportation - Outlined
- First Nations Traditional Use Study Areas**
- Allied Tsimshian Tribes
  - Bonaparte
  - Canim Lake Band
  - Canoe Creek Band
  - Esketemc First Nation (Alkali Lake Indian Band)
  - Gitanyow Band Council
  - Haisla Nation TUS
  - Homalco First Nation
  - Hul'qum'num Treaty Group
  - Hupacasath First Nation
  - Huu ay aht First Nation
  - Inshuck'ch and Nquatqua
  - Ka:'yu:'k'ih'Che:k:les7et'h' First Nation
  - Kamloops Indian Band
  - Kaska Dena Traditional Use Study
  - Kitasoo (Xa'xais)
  - Kitkatla Indian Band
  - Kitselas Indian Band

Imagery Date: October 21, 2010

Mapsheets #: 82E.082

0 1400 2800 m.

Scale: 1:99,081

### NOTE:

Map produced using iMap BC on-line.  
 FOR GENERAL REFERENCE ONLY.  
 The accuracy and completeness of the information on this map is not guaranteed. Not for navigational purposes.

Datum/Projection: NAD83, Albers Equal Area Conic

### Key Map

