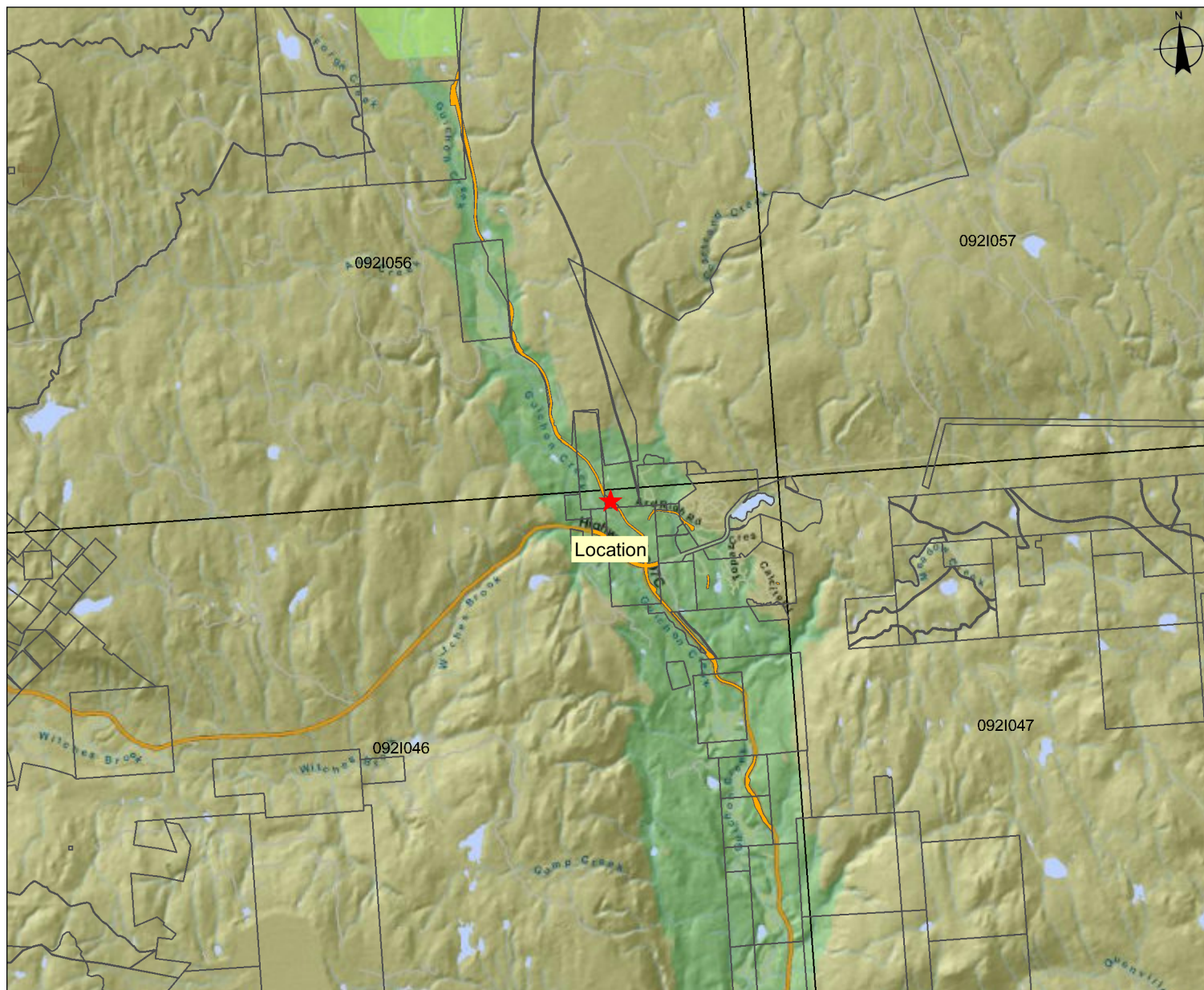


**Proponent: Telus Communication**

**Location:** Tunkwa Lake Road, vicinity of Logan Lake









## Location Map

Submitting Agency:

File #: 3412331

*Legend*

-  Primary Survey Parcels - Outlined  
 Transportation Corridors - Colour Filled  
 Transportation Corridors - Outlined  
 Crown Land Applications by Type - Outlined  
 Mapsheet Grid (1:20,000)  


Imagery Date: November 19, 2019

Mapsheet #: 92I.048

0	1400	2800 m.
---	------	---------

Scale: 1:99,081

NOTE:

Map produced using iMap BC on-line.

FOR GENERAL REFERENCE ONLY.  
The accuracy and completeness of the information on  
this map is not guaranteed. Not for navigational  
purposes.

Datum/Projection: NAD83, Albers Equal Area Conic

### Key Map

