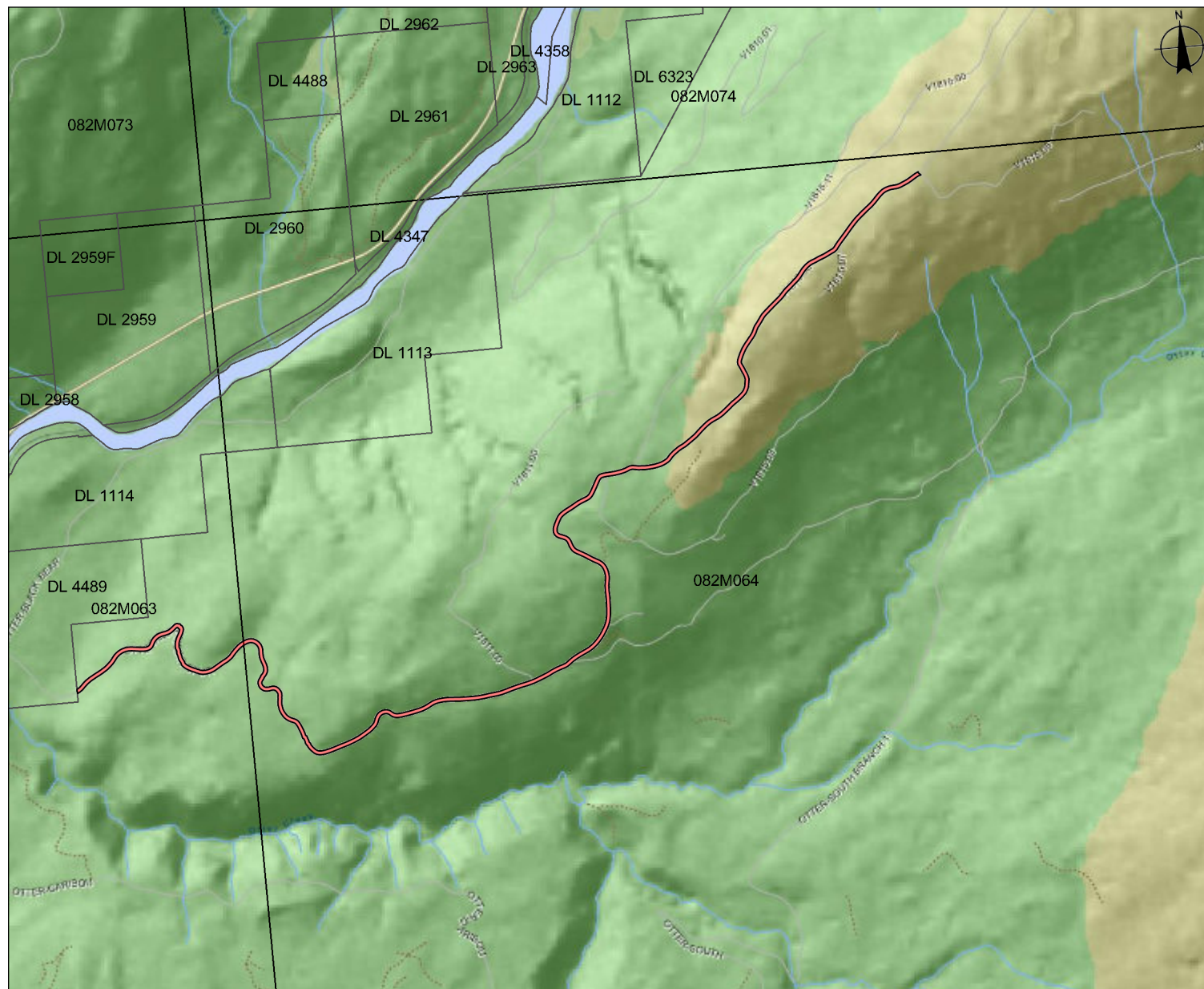


Proponent: T.M. Mobile
Description: Communication Site
Location: 5 km south of Avola



Location Map

Submitting Agency:

File #: 3412362

Legend

- Primary Survey Parcels - Outlined
- Primary Survey Parcels - Legal Descriptions
- Mapsheet Grid (1:20,000)

Imagery Date: December 15, 2010

Mapsheet #: 82M.063 and 82M.064

0 450 900 m.

Scale: 1:31,378

NOTE:

Map produced using iMap BC on-line.

FOR GENERAL REFERENCE ONLY.
The accuracy and completeness of the information on this map is not guaranteed. Not for navigational purposes.

Datum/Projection: NAD83, Albers Equal Area Conic

Key Map

