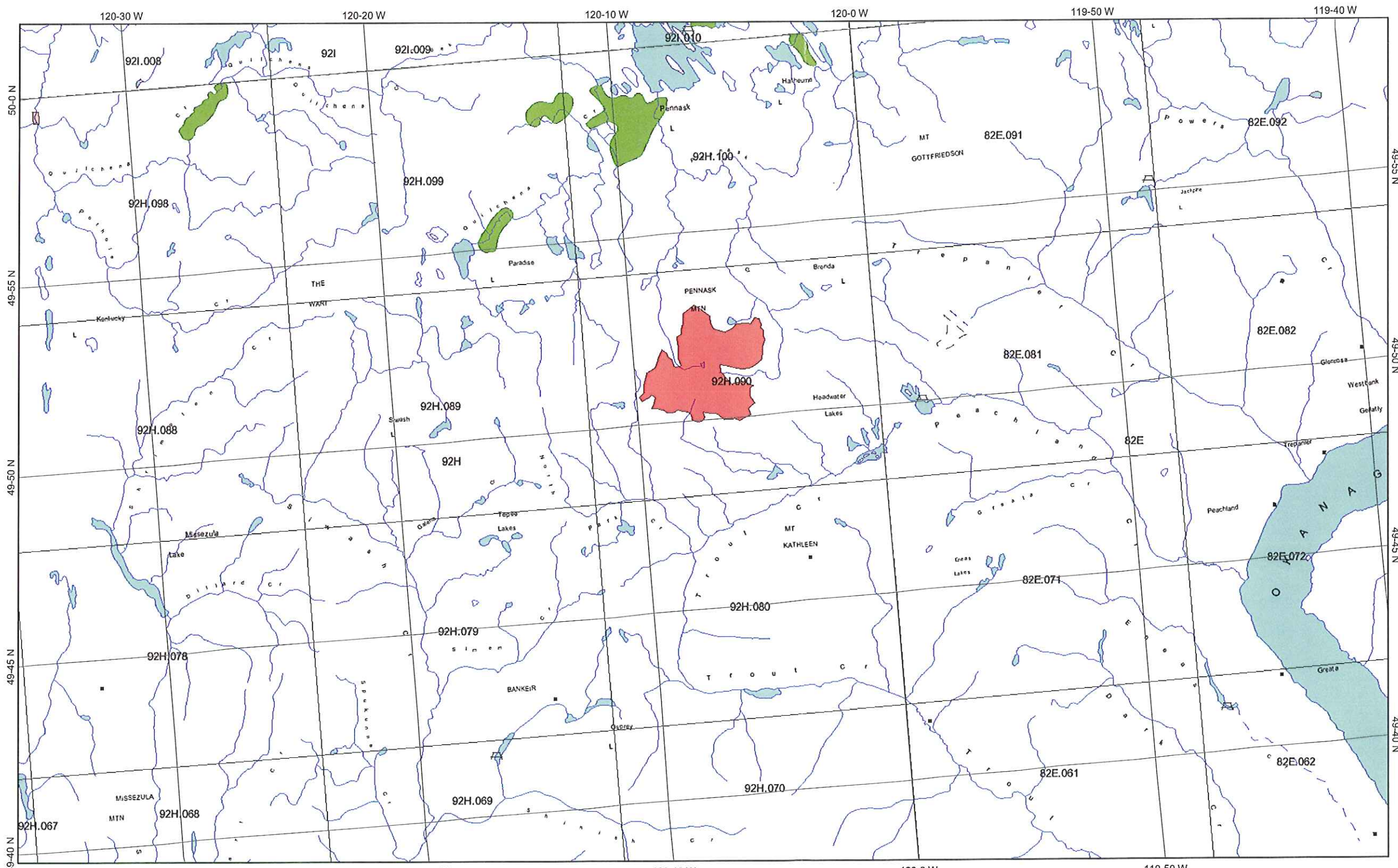
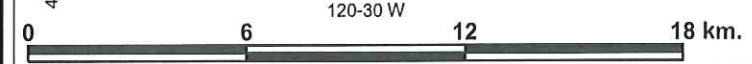


EDPR AOI - Pennask Mountain General Area



Legend

- Land Claim Settlement Area
- National Park
- Indian Reserve
- Annotation (1:250K)
- Landmark - Points (1:250K)
- Mine - Abandoned
- Campground/Campsite
- Park
- Ski Area
- Park/Picnic Area
- Campground Campsite
- Town
- Village
- School
- Fire Lookout - Tower
- Ranger/Warden Station
- Customs Office
- Electric Facility/Transformer Station
- Oil/Gas Facilities
- Cabin/Hut/Shack
- Terminal/Station - Railroad
- Building
- Tower/Mast
- Tower/Mast - Microwave
- Tower - Clearance(symbol)
- Monument (Historical)
- Beacon
- Navigation Aid - Light(symbol)
- Tank
- Landmark - Lines (1:250K)
- Mine (Underground)
- Pit
- Quarry
- Sewage Leaching Field
- Tailing Pile/Pond/Dump
- Built-up Area
- Designated Area
- Oil/Gas Facilities
- Ski Lift
- Conveyor
- Wharf
- NTS Grid
- BCGS Grid
- Water - Points (1:250K)
- Rapids
- Falls
- Dam
- Sinkhole
- Water - Lines (1:250K)
- Conduit - Aboveground
- Conduit - Electrical - Underground
- Canal - Irrigation
- Falls
- Penstock
- Rapids



Map center: 49°49' N, 120°7' W Scale: 1:200,000

This map is a user generated static output from an Internet mapping site and is for general reference only. Data layers that appear on this map may or may not be accurate, current, or otherwise reliable. THIS MAP IS NOT TO BE USED FOR NAVIGATION.

Notes: Pennask Mountain
2085.60 ha
May 16, 2011