



Nelson

Legend

Water - Rivers, Creeks, Shorelines, etc. (1:20,000)

- Glacier
- Icefield
- Canal
- Dam
- Dam - Beaver
- Ditch
- Falls
- Flume
- Rapids
- River or Stream - Definite
- River or Stream - Dry
- River or Stream - Indefinite
- River or Stream - Left Bank
- River or Stream - Right Bank
- Dam - section Base
- Flooded Land - Inundated
- Lake - Definite
- Lake - Indefinite
- Lake - Intermittent
- Reservoir - Definite
- Reservoir - Indefinite
- Reservoir - Intermittent
- Marsh
- Swamp
- Breakwall or Breakwater - Large

0 750 1500 m.

Scale: 1:52,242

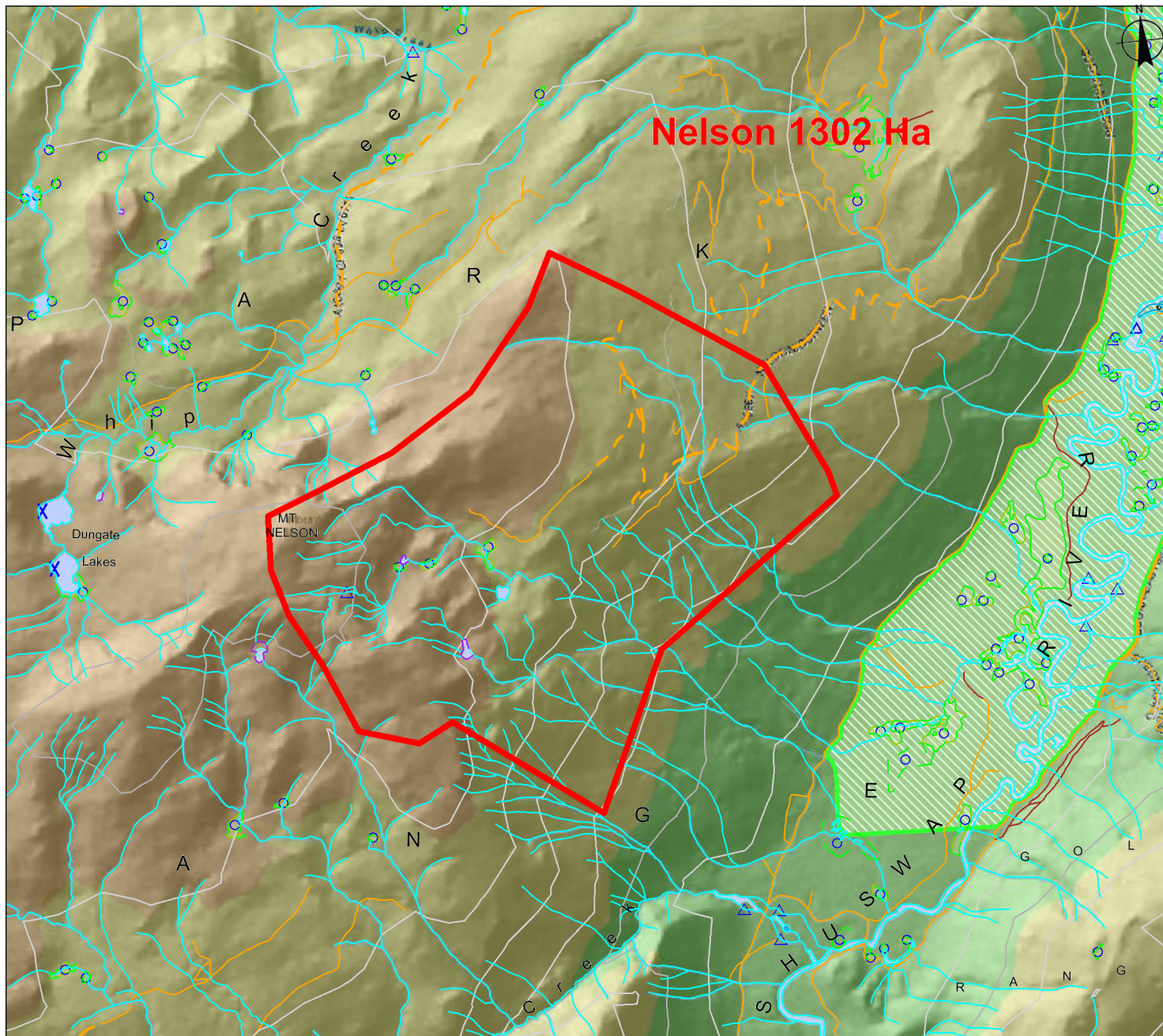
Copyright/Disclaimer

The material contained in this web site is owned by the Government of British Columbia and protected by copyright law. It may not be reproduced or redistributed without the prior written permission of the Province of British Columbia. To request permission to reproduce all or part of the material on this web site please complete the Copyright Permission Request Form which can be accessed through the Copyright Information Page.

CAUTION: Maps obtained using this site are not designed to assist in navigation. These maps may be generalized and may not reflect current conditions. Uncharted hazards may exist. DO NOT USE THESE MAPS FOR NAVIGATIONAL PURPOSES.

Datum/Projection: NAD83, Albers Equal Area Conic

Key Map of British Columbia



Nelson 1302 Ha