

STATUTORY RIGHT OF WAY PLAN OVER
PART OF THE BED OF WOOD LAKE LYING
WITHIN SECTION 35, TOWNSHIP 20, O.D.Y.D.

Pursuant to Section 113 of the Land Title Act

B.C.G.S. 82L004

The intended plot size of this plan is 560mm in width by 432mm in height (ansl D size) when plotted at a scale of 1:720

LEGEND

UTM grid bearings (NAD 83 CGPC) are derived from differential carrier phase GPS observations and are referred to the central meridian of UTM Zone 11 (117° West longitude).

To obtain local astronomic bearings at the East 1/4 of Section 34, subtract 1° 50' 25".

The UTM coordinates and estimated network horizontal accuracy are derived from dual-frequency static GPS observations to gradeable control monument 256081.

The estimated network horizontal accuracy is 0.1m.

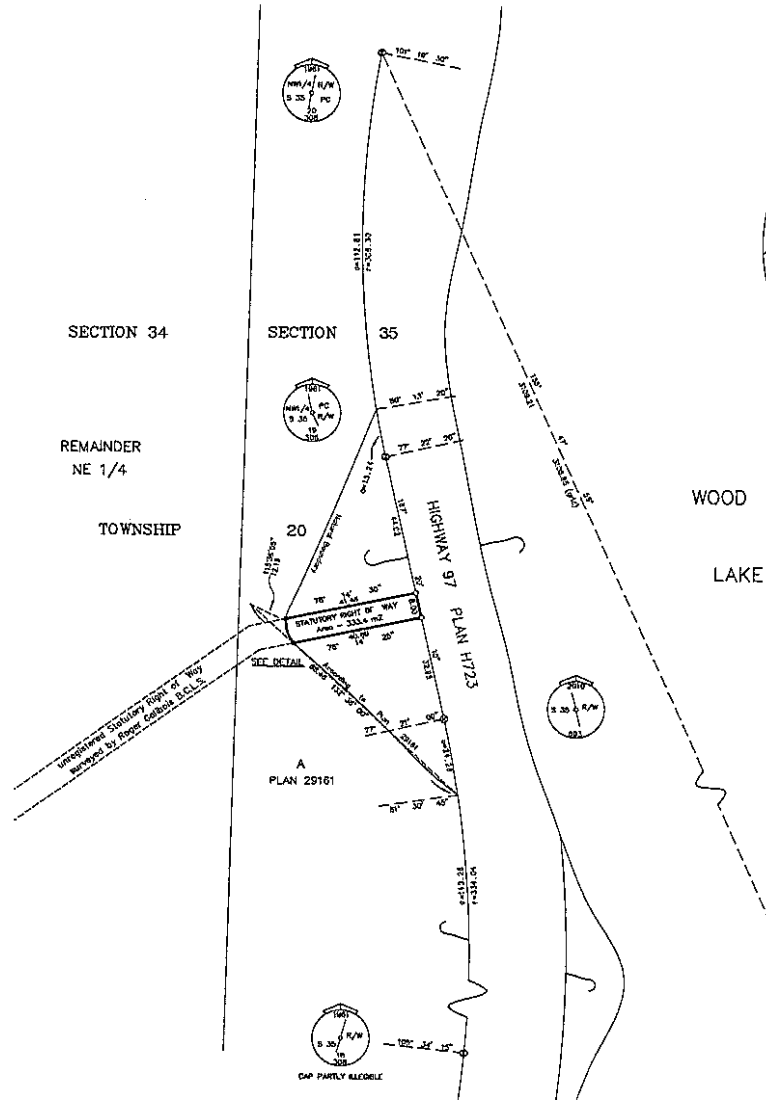
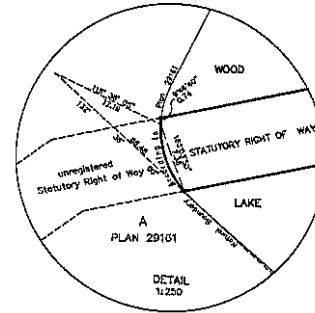
This plan shows horizontal ground level distances based on a mean ellipsoidal elevation of 430 metres. To compute grid distances, multiply ground level distances by the mean combined factor 0.999826.

- Standard Iron Post Found
- Standard Iron Post Set
- ⊙ Standard Capned Post Found
- ⊙ Standard Capned Post Set
- ⊕ Control Monument Found

This Plan lies within the Regional District of Central Okanagan.

This Plan is prepared as the Official Plan of the lands shown hereon for the Surveyor General.

The field survey represented by this plan was completed by Roger Galabek, B.C.L.S. on the 14th day of September, 2010.



Q24 854018
N: 2549524.873
E: 329754.427
Elev: 509.277

MMRM GROUP
 MRM GEOTECHNICS INC
 Suite 101 - 580 Dumassey Ave.
 Kelowna, BC V1Y 1E6
 T: 250.868.1334
 FLD: 203.65.03 DWG: 1-12.0