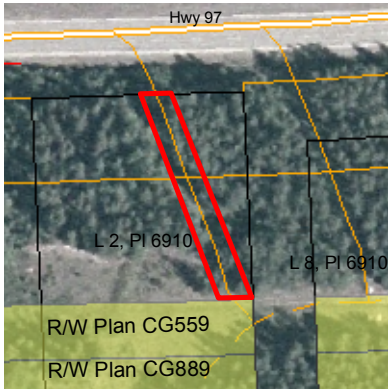
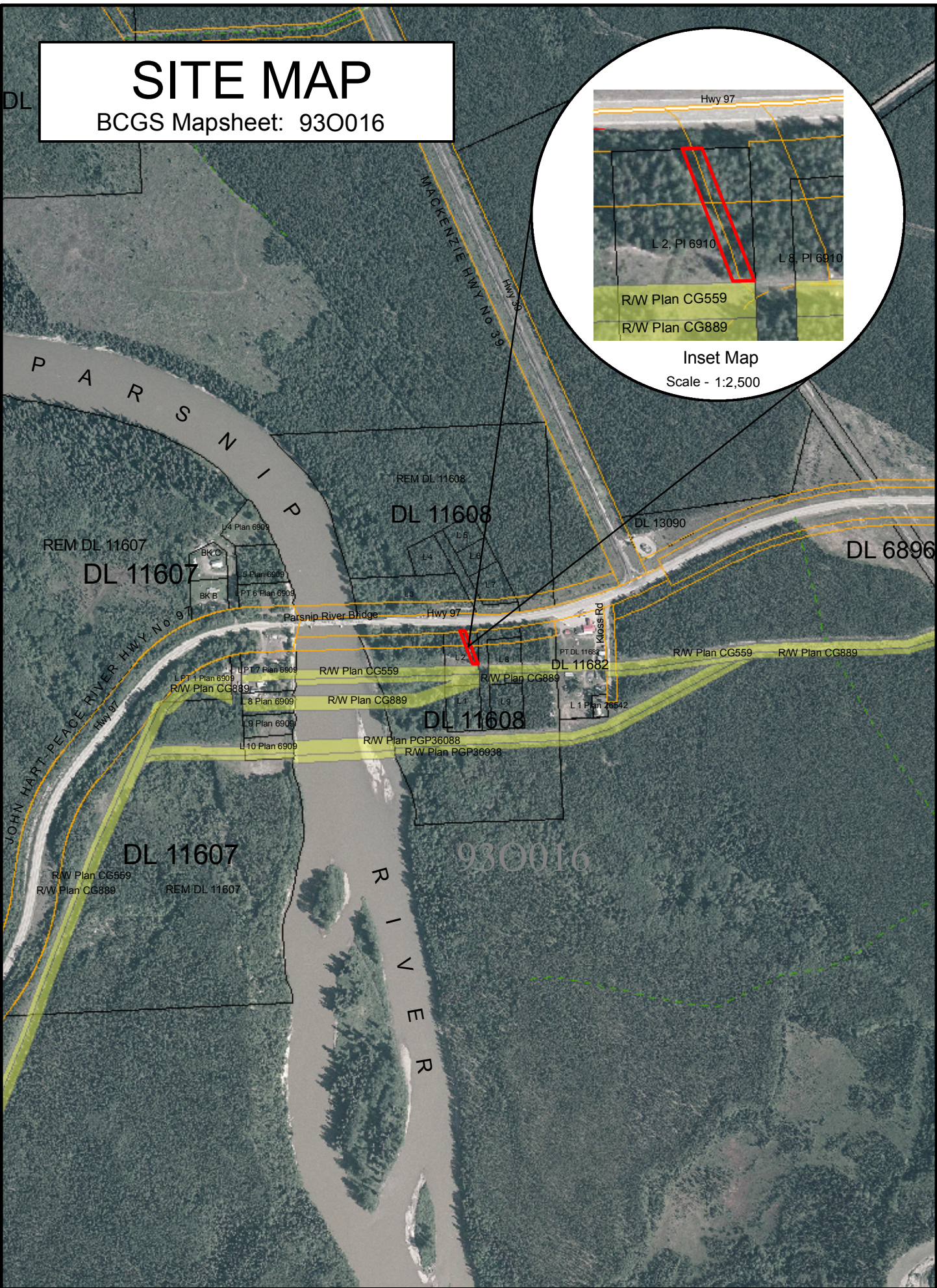


SITE MAP

BCGS Mapsheet: 930016



Inset Map
Scale - 1:2,500



File Number: 7406294

Site # 1 of 1 - APPLICATION Area = 0.071 Ha.

TYPE: RIGHT OF WAY

PURPOSE: UTILITY

SUBTYPE: STATUTORY R/W
OR EASEMENT

SUBPURPOSE: ELECTRIC POWER LINE

LOCATION: Parsnip River

Produced by
Ministry of Natural Resource Operations
Northern Service Centre
FrontCounterBC
Date: Mar 28, 2012

Scale: 1:10,000 *

* if printed on 8.5X14 page

Projection: BC Albers
Datum: NAD 83

Meters

0 250 500



Legend

- Crown Land Application
- Primary Survey Parcel
- Subdivision
- Municipal Boundary
- Surveyed Rights of Way
- Transportation Corridor
- Provincial Park
- Protected Area
- OIC Ecological Reserve
- Recreation Area
- Transportation - Lines (20K)
- Airfield
- Road
- Forest Service Road
- Road Permit
- Trail
- Rail Line

- Water - Lines (20K)
- Rapids
- River or Stream - Definite
- River or Stream - Dry
- River or Stream - Indefinite
- Dam - section Base
- Flooded Land - Inundated
- Lake - Definite
- Lake - Indefinite
- Lake - Intermittent
- Reservoir - Definite
- Glacier/Icefield
- Island - Definite
- Sand Bar
- Contour - 20m interval

All measurements are approximate.