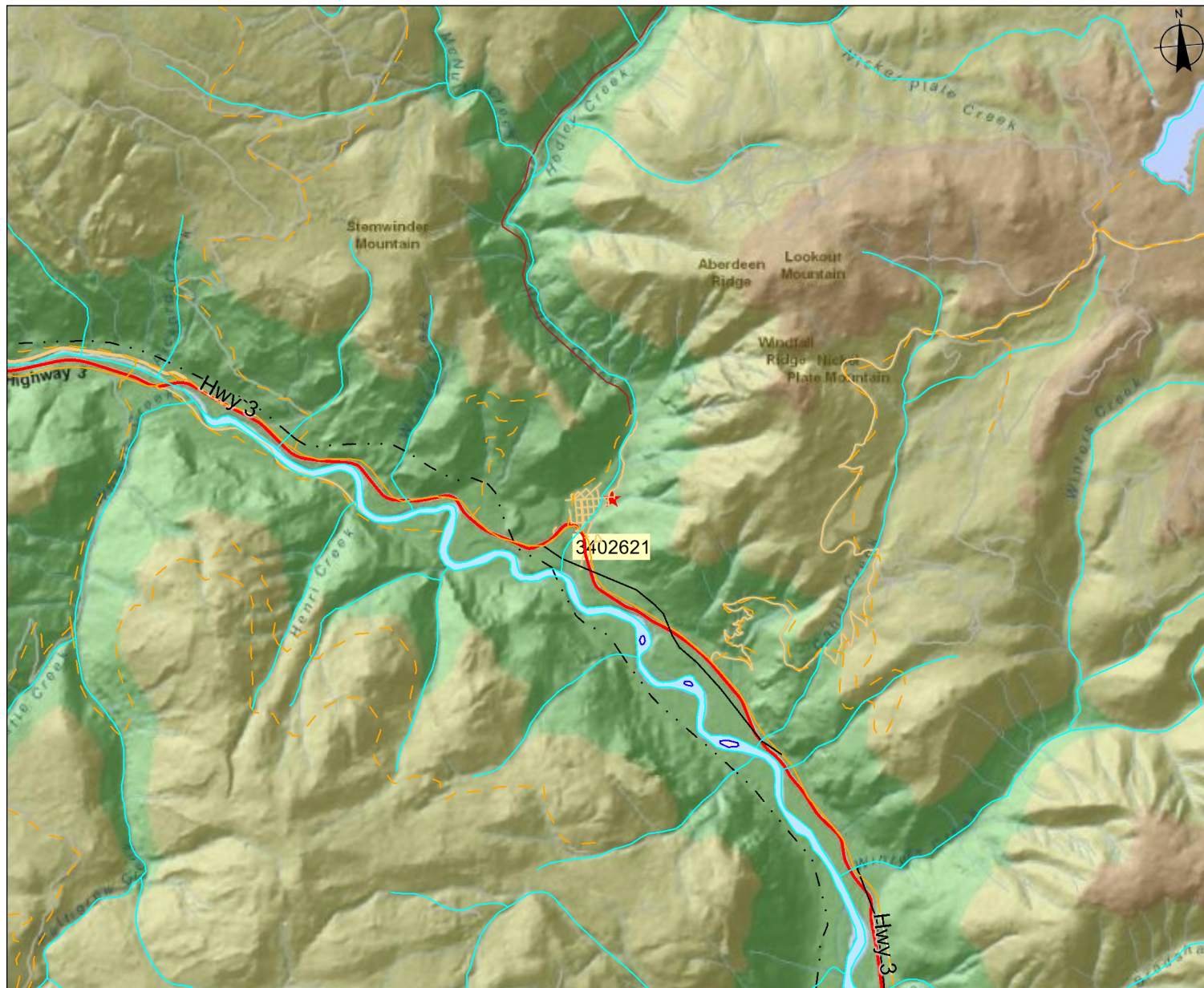


Proponent: Lynn Margarite Wells
Description: Crown Grant
Location: vicinity of Hedley BC



Location Map

Submitting Agency:

File #: 3402621

Date: April 30, 2012

Legend

(1:250,000) Water - Rivers, Creeks, Shorelines, etc.

- Ice mass - Debris Covered Ice
- Conduit - Aboveground
- Conduit - Electrical - Underground
- Canal - Irrigation
- Falls
- Penstock
- Rapids
- River or Stream - Definite
- River or Stream - Braided
- River or Stream - Disappearing
- River or Stream - Dry
- River or Stream - Indefinite
- River or Stream - Left Bank
- River or Stream - Right Bank
- Penstock - Underground
- Dam
- Flooded Land - Inundated
- Lake - Definite
- Lake - Indefinite
- Lake - Intermittent
- Lake - Marshy
- Reservoir - Definite
- Flooded Land - Inundated Indefinite
- Lake - Marshy Indefinite
- Marsh
- Icefield
- Beach
- Rockwall or Rockwater - Low

Mapsheets #: 92H.040

0 1200 2400 m.

Scale: 1:84,541

NOTE:

Map produced using iMap BC on-line.

FOR GENERAL REFERENCE ONLY.
The accuracy and completeness of the information on this map is not guaranteed. Not for navigational purposes.

Datum/Projection: NAD83, Albers Equal Area Conic

Key Map

