



September 10, 2012

Baldface Lodge: Jeff Pensiero
PO Box 906
Nelson, BC
V1L 6A5

PROVINCE OF
BRITISH COLUMBIA

SEP 18 2012

Front Counter BC
Tenure Amendment Application
Attn: JoAnne

RECEIVED
CRANBROOK, BC

RE: Crown Land Tenure #4403467

Baldface Lodge wishes to amend its Management Plan and Crown Land Tenure with the following:

1. The addition of an Intensive Use Site (IUS) for the purpose of hosting the Redbull Snowboarding Event formerly known as the "Super Natural".
2. Provision to allow approved Work Permits for bladed/excavated snow cat trails.

1. Intensive Use Site

In promoting the snow cat skiing business of Baldface Lodge, there is an opportunity offered to Host an internationally televised Red Bull/NBC snowboarding event known as the Red Bull Supernatural.

In order to host this Event, improvements on the ski run we call "Scary Cherry" are required. Baldface Lodge would like to request an Intensive Use Site designation to satisfy Crown Land Tenure requirements.

In 2011, Red Bull, through Baldface Lodge, bolstered the local economy by spending more than \$650,000, created 15 jobs, and promoted the excellent tourism opportunities found in the Kootenay region. The production of the Red Bull Travis Rice Supernatural was a 2 hour NBC Sports Special within the Red Bull Signature Series of television events.

2. Bladed Trails

Within the Crown Land Tenure agreement, Baldface Lodge has endeavored to build snow cat roads with a minimal disturbance ethic. To date, trees have been felled, limbed, and bucked to create winter snow cat access. A comprehensive and efficient road system has been achieved.

However, there are several difficult and potentially hazardous sections that need to have an excavated "pilot trail" pushed through to allow the possibility for snow road



September 10, 2012

building. We have endured these sections over the years, but they always prove difficult and costly.

Baldface Lodge does not wish to create full "right-of-way" vehicle roads, but rather excavate short sections that connect natural terrain features thus allowing for safe and efficient snow road construction. Once the snow cat pushes through, the snowpack provides the building material for adequate passage.

Baldface Lodge formally requests a framework for acquiring the necessary permission to conduct this work as these operational needs arise.

Appendices

Please find included in this application:

- Appendix 1 - A description of the planned activities within the IUS.
- Appendix 2 - A small scale map showing the general area north of Nelson, BC
- Appendix 3 - A large scale map of the Baldface Tenure Area including the Lodge and IUS location.
- Appendix 4 - A site plan with the IUS polygon.
- Appendix 5 - A listing of coordinates and area measurement of the IUS.

Thank you for your attention to these requests.

Sincerely,

Lee Usher
ACMG Ski Guide
Project Foreman for Red Bull Super Natural
Ski Operations Consultant

for Jeff Pensiero, Baldface Lodge



September 10, 2012

Appendix 1- Improvements and Activities within the Proposed Intensive Use Site

The purpose of the IUS is to contain the improvements required to host the Red Bull Super Natural Event and film production activities.

Site Improvements

There will be approximately 100 "stunts" built for the purpose of creating obstacles and apparatus for professional athletes to jump off and do tricks for the film production.

These installations will be built primarily with materials harvested from the site and surrounding area. This is first a cost saving measure, avoiding the prohibitive cost of transporting materials to the remote and inaccessible site. Second, it is an attempt to minimize the impact of our activities by not placing imported materials, which may create un-natural hazards in the future. The in-situ materials will return to the earth as nature intended and/or will be easier to tidy up when the Event is completed.

Activities within the Intensive Use Site would be:

- Glading of the Ski Run area and salvaging the 'waste' wood for construction material.
- Design, Layout and Construction of the obstacle installations.
- Ongoing Avalanche Mitigation throughout the winter season to protect structures and personnel.
- Specific Guide Training to prepare for the Event's safety and risk management program.
- Hosting and filming the invitational Event in February.

Adjacent to the IUS, activities will occur associated with the event that are low impact and temporary. Specifically, there will be snow cat activity in the basin of the bowl to build large jump and "snow park" features. These will be constructed from snow and will melt with the seasonal snowpack.

The Event format is Invitational, and will be conducted as a closed site for filming activities only. There will be no public spectacle beyond the 'made for television' product that is the ultimate Asset of this project.

The busiest day on the site will be the Event Day and will include 20 of the world's best snowboarders, 8 professional Guides, and a film production and media staff of approximately 30.



September 10, 2012

Appendix 1 cont'd

Logistics for the event will be supported by Baldface Lodge. The Lodge is located 1.5 km south along easily traveled ridge top snow roads. The Event Day will be very similar to a regular ski day with lunches provided in the snow cats, and folks 'out for the day' and dressed for the conditions. There will be opportunity and conveyance for people to return to the lodge should the urge arise.

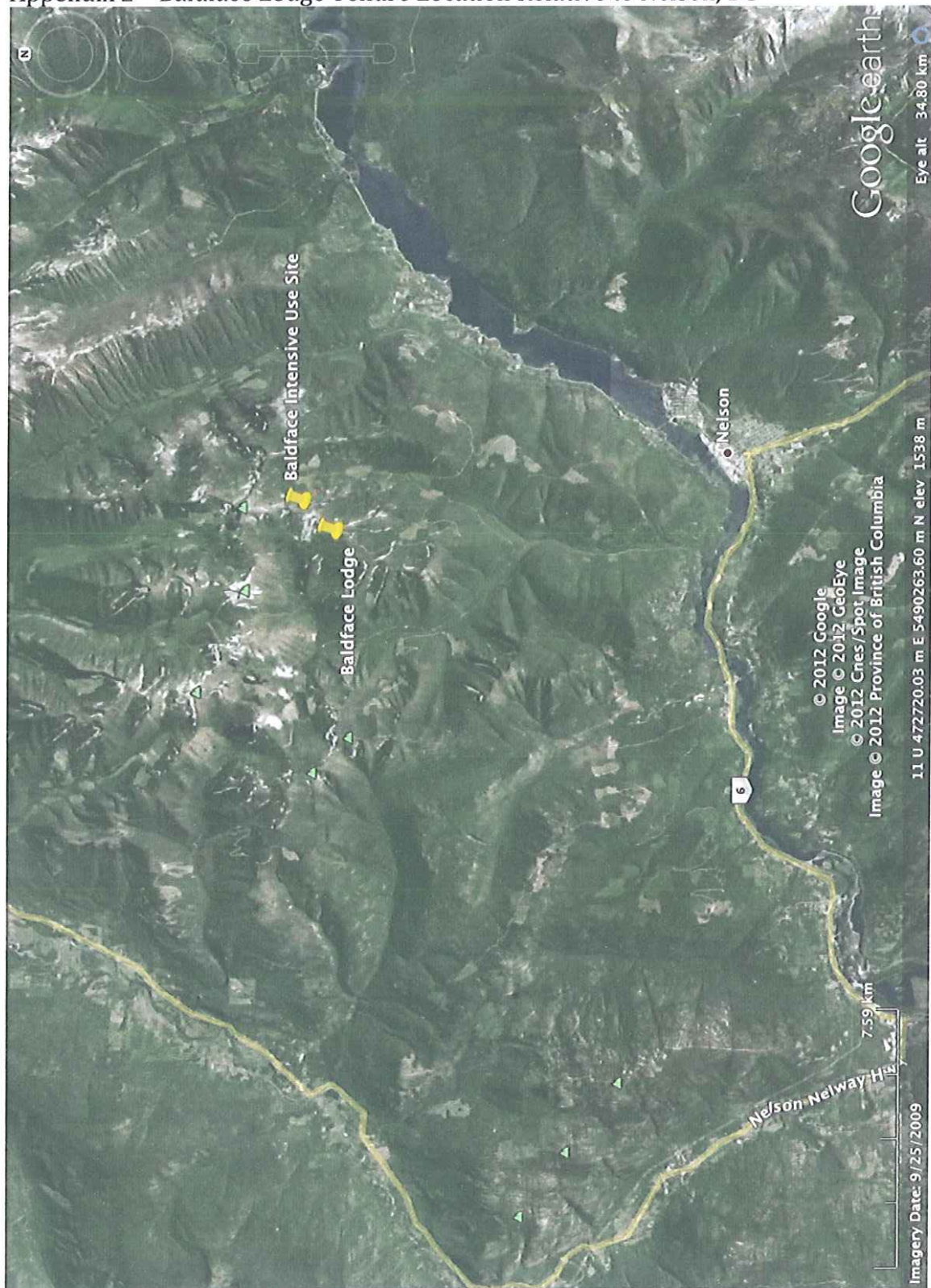
Risk Management will be the duty of the Event Mountain Safety Coordinator. He will work with the Guide Team to ensure the risk management needs of the Event are addressed and to ensure the regular operations are not overtasked with the Event activities.

Post event, the site will be cleaned of all manmade detritus and film production rigging and be left as clean as the winter snow. Avalanche mitigation and skier compaction will continue as needed to ensure the defense of the installations.

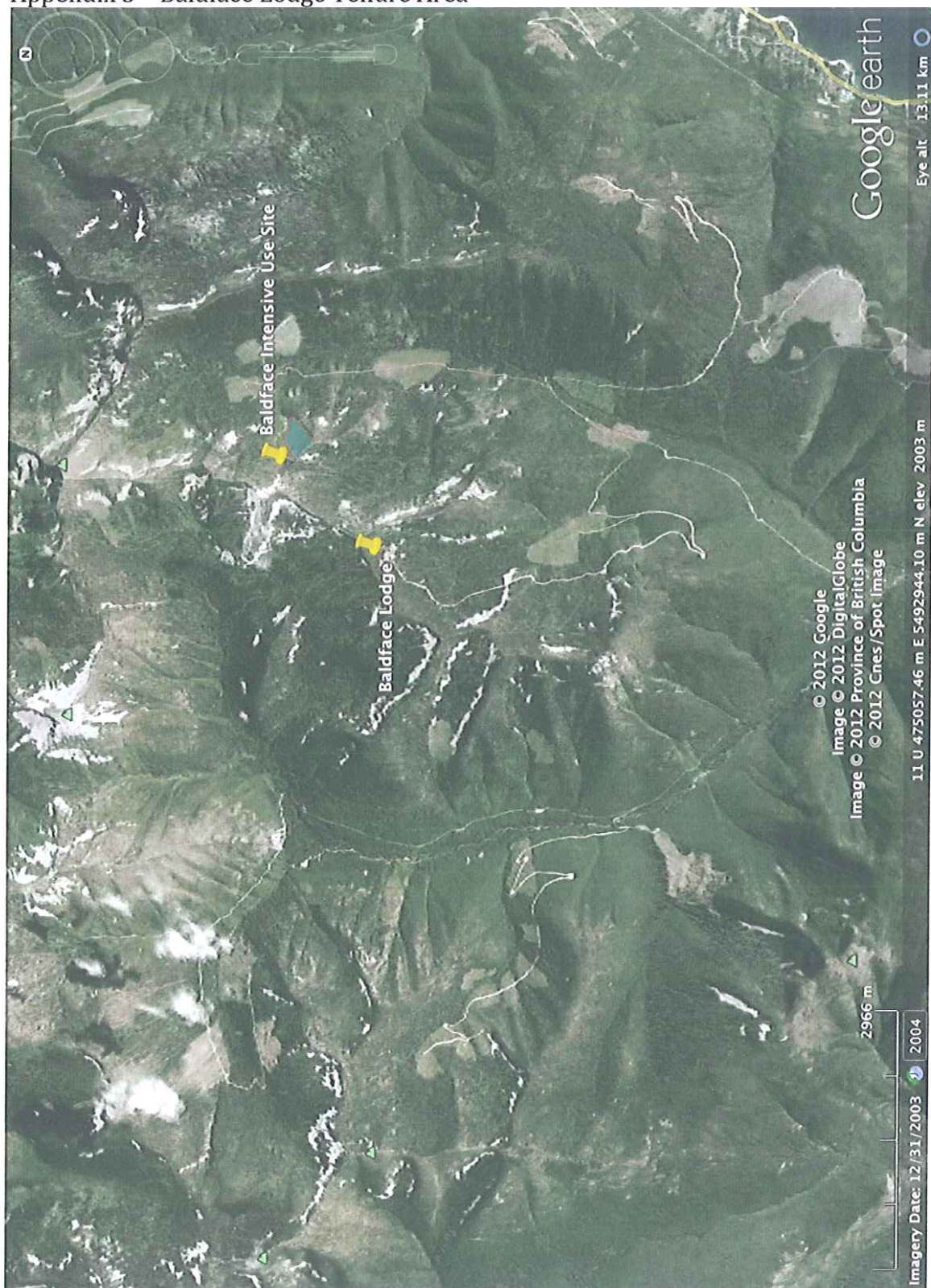
While the event continues, the installations will be repaired and maintained. As the structures succumb to the harsh winter snowpack, they will be removed and composted.

See appendix 4 for site plan.

Appendix 2 – Baldface Lodge Tenure Location Relative to Nelson, BC



Appendix 3 – Baldface Lodge Tenure Area

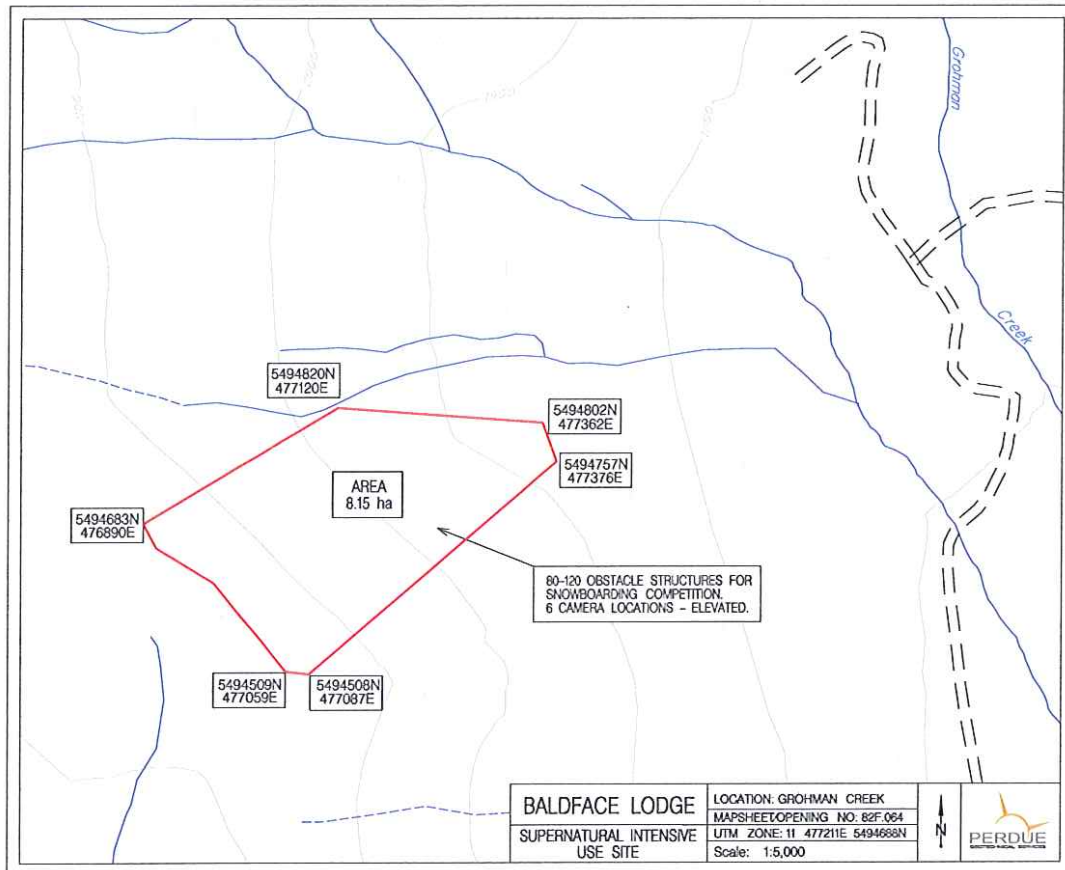




September 10, 2012

Appendix 4 – Intensive Use Site Polygon

Note: not to scale as printed





September 10, 2012

Appendix 5 – Intensive Use Site Coordinates and Area²

Coordinate points listed from Northernmost corner, clockwise:

5494683 N	476890 E	2172m
5494875	477120	1967m
5494802	477362	1869m
5494757	477376	1882m
5494508	477087	2165m
5494509	477059	2180m

Area of Intensive Use Site polygon = 8.15 Ha

Appendix 4

