

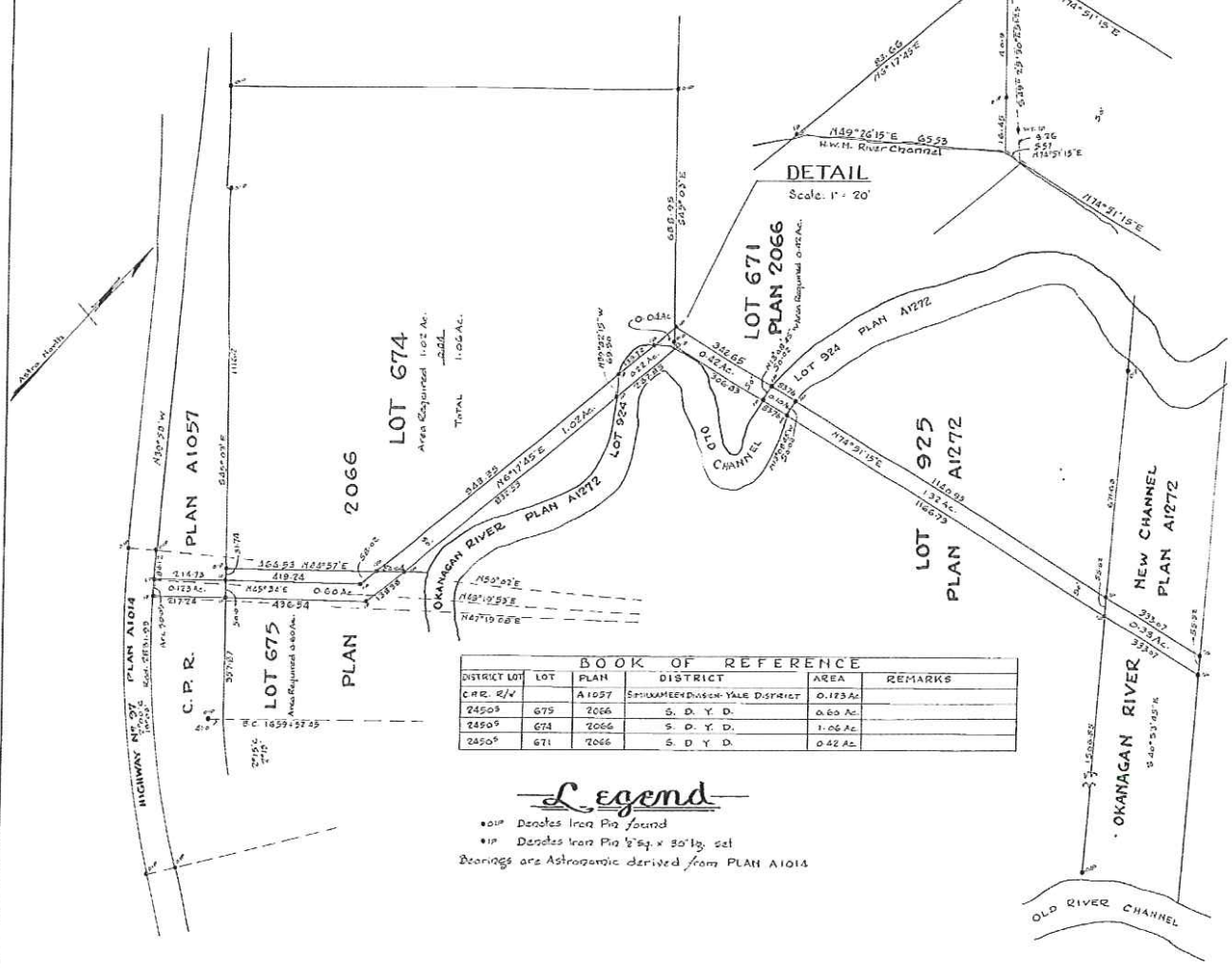
**PLAN SHOWING RIGHT OF WAY FOR POWER LINES
THROUGH C.P.R. RIGHT OF WAY PLAN A1057, AND LOTS 675, 674 AND 671
OF DISTRICT LOT 2450^S PLAN 2066
— SIMILKAMEEN DIVISION-YALE DISTRICT —**

PLAN A2619

Deposited in the Land Registry
Office at Kamloops, B.C. this 22 day
of July 1964

W. J. Macdonald
Registrar

Scale: 1" = 200'



DETAIL
Scale: 1" = 20'

BOOK OF REFERENCE					
DISTRICT LOT	LOT	PLAN	DISTRICT	AREA	REMARKS
C.P.R. R/W		A1057	SIMILKAMEEN DIVISION-YALE DISTRICT	0.173 AC	
2450 ^S	675	2066	S. D. Y. D.	0.00 AC	
2450 ^S	674	2066	S. D. Y. D.	1.02 AC	
2450 ^S	671	2066	S. D. Y. D.	0.42 AC	

Legend

• 1" P Denotes Iron Pin found
• 1" P Denotes Iron Pin 1/2" x 50" lg. set
Bearings are Astronomic derived from PLAN A1014

I, R. P. Brown of Penticton, a British Columbia
Land Surveyor make oath and say that I was present
at and did personally superintend the survey
represented by this plan and that the survey and
plan are correct. The said survey was completed
on the 26th day of May, 1964.

R. P. Brown B.C.L.S.

Sworn before me this 15th day of July, 1964.

W. J. Macdonald
A Commissioner for taking Affidavits for
British Columbia.

SCHEDULE B