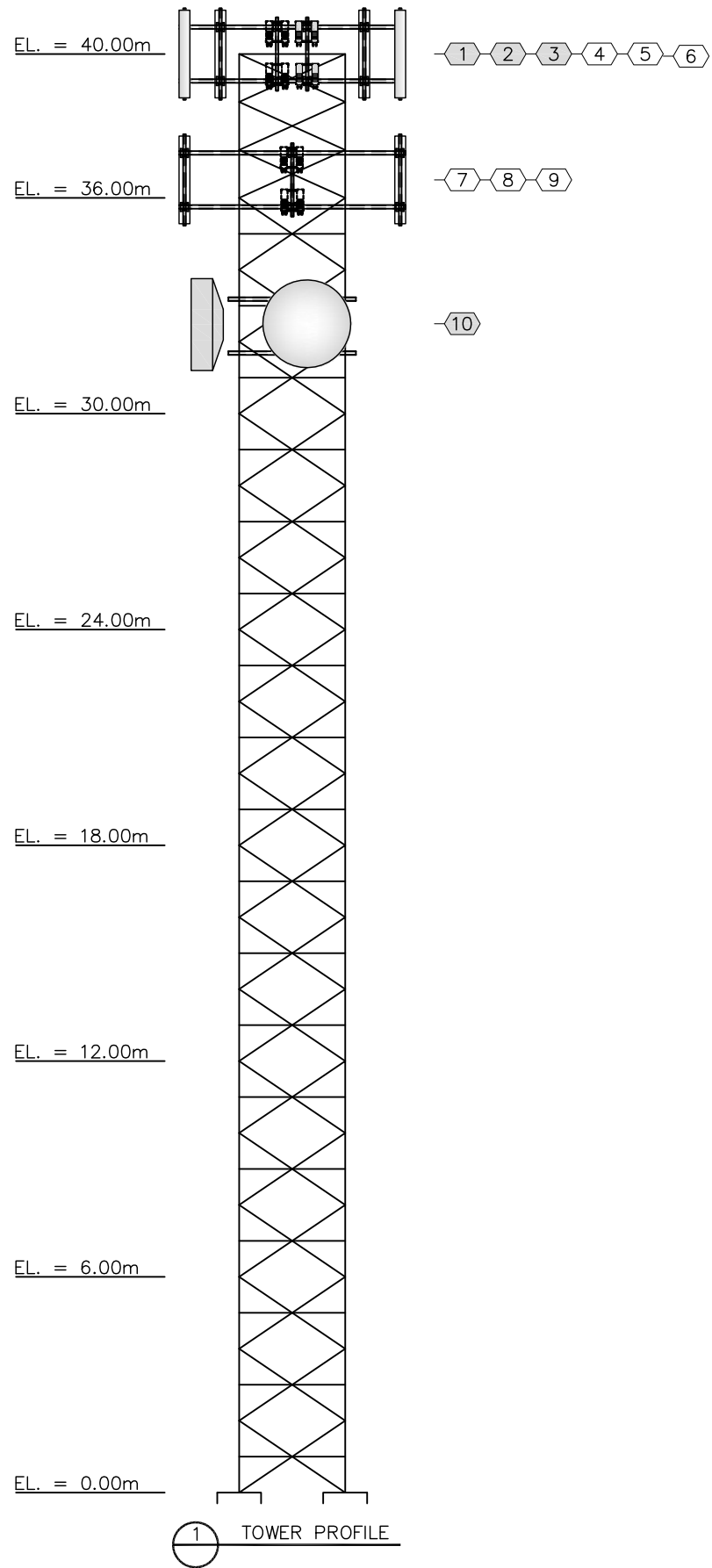


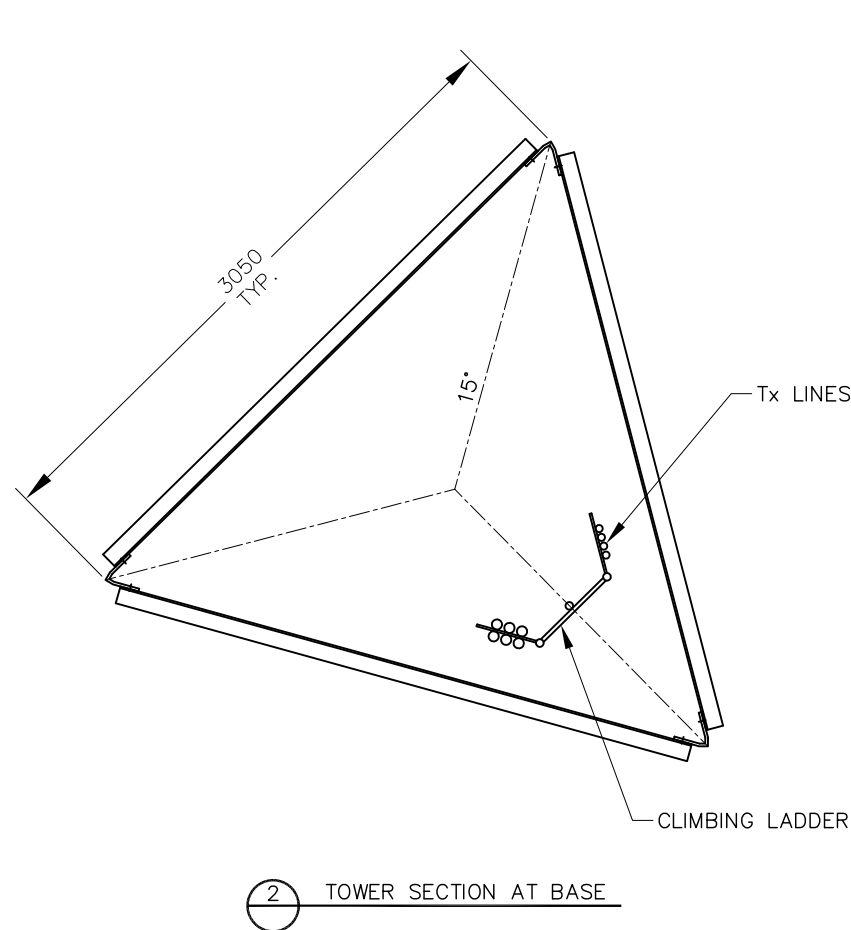
SECTION NO.	1	2	3	4	5	6	7
SECTION NAME							
PANEL TYPE				76x76x5			
PANEL HEIGHT (m)				2.000			1.333
LEGS (350W)	V152x152x22	V152x152x19	V127x127x16	V102x102x16	V102x102x13	V102x102x8	V102x102x6
DIAGONALS (300W)	L76x76x6	L76x76x5		L64x64x6			L51x51x5
HORIZONTALS							
RED. SecH1 (300W)	L51x51x6						



MAXIMUM BASE REACTIONS (FACTORED AS PER CSA-S37-01)	
DOWNLOAD (kN):	1742.1
UPLIFT (kN):	1685.1
SHEAR (kN):	88.0

RADIO ANTENNA SCHEDULE								
#	ELEV. (m)	ANTENNA/EQUIPMENT			Tx LINE		OWNER	STATUS
		QTY.	MODEL	AZIMUTH	QTY	MODEL		
1	40.0	4	KATHREIN 800-10766	TBD	-	JUMPER	TELUS	INITIAL
2	40.0	4	RRU'S	-	-	-	TELUS	INITIAL
3	40.0	1	DISTRIBUTION BOX 2'x2'	-	1/1	DC/FIBER	TELUS	INITIAL
4	40.0	4	KATHREIN 800-10766	TBD	-	JUMPER	TELUS	FUTURE
5	40.0	4	RRU'S	-	-	-	TELUS	FUTURE
6	40.0	1	DISTRIBUTION BOX 2'x2'	-	1/1	DC/FIBER	TELUS	FUTURE
7	36.5	4	KATHREIN 800-10766	TBD	-	JUMPER	TELUS	FUTURE
8	36.5	4	RRU'S	-	-	-	TELUS	FUTURE
9	36.5	1	DISTRIBUTION BOX 2'x2'	-	1/1	DC/FIBER	TELUS	FUTURE
10	32.5	2	HP8	TBD	4	LDF2	TELUS	INITIAL

DC SIZE: FROM 0m TO 75m - #10 & FROM 75m TO 100m - #8  
 FIBER SIZE: 1"φ



**DESIGN SPECIFICATIONS:**

TO: CAN/CSA-S37-01.  
 WIND: 330Pa REGIONAL  
 ICE: CLASS 'II' (25.4mm)  
 STEEL: G40.21 300W, 350W (LEGS & ROUNDS)

OBSTRUCTION MARKING: One RVA  
 LS8-E0-LED (D1RW-C13-008 White/Red LED Beacon w/controller & photocell)  
 LADDER: INTERNAL c/w SAFETY RAIL

TWIST & TILT AT M/W DISHES <0.5deg.  
 TWIST & TILT AT PANEL ANTENNAS <2deg. & 1deg.

SERVICEABILITY FACTOR = 0.7  
 IMPORTANCE FACTOR = 1.0

ADDITIONAL FOUNDATION CAPACITY = 10% (FOR TELUS USE ONLY)

TOWER TYPE:  
 - TRI-POLE  
 - KNOCK DOWN (BOLTED-A325 BOLTS)  
 - LEGS = 3

NOTES:  
 TOWER DESIGN IS CONCEPTUAL FOR PERMIT PURPOSES AND IS NOT FOR CONSTRUCTION.

CLIENT:



CARRIER:	
----------	--

5			
4			
3			
2			
1			
0	MJ	ISSUED FOR PERMIT	25 OCT 12
NO.	BY	DESCRIPTION	DATE

**ROEHAMPTON COMMUNICATIONS LTD.**  
 703 EVANS AVENUE, SUITE 602 TORONTO, ON M9C 6E9 TEL: (416) 232-0812 FAX: (416) 232-2579  
 744 WEST HASTINGS STREET, SUITE 219 VANCOUVER, BC V6C 1A5 TEL: (778) 300-1234

LOCATION:	GOLDEN EAST, B.C.		
TITLE:	TOWER PROFILE		
PROJECT NAME:	PROJECT NO:	DWG. NO:	
NEW TOWER	BC0260	A01	