

Plan
Showing

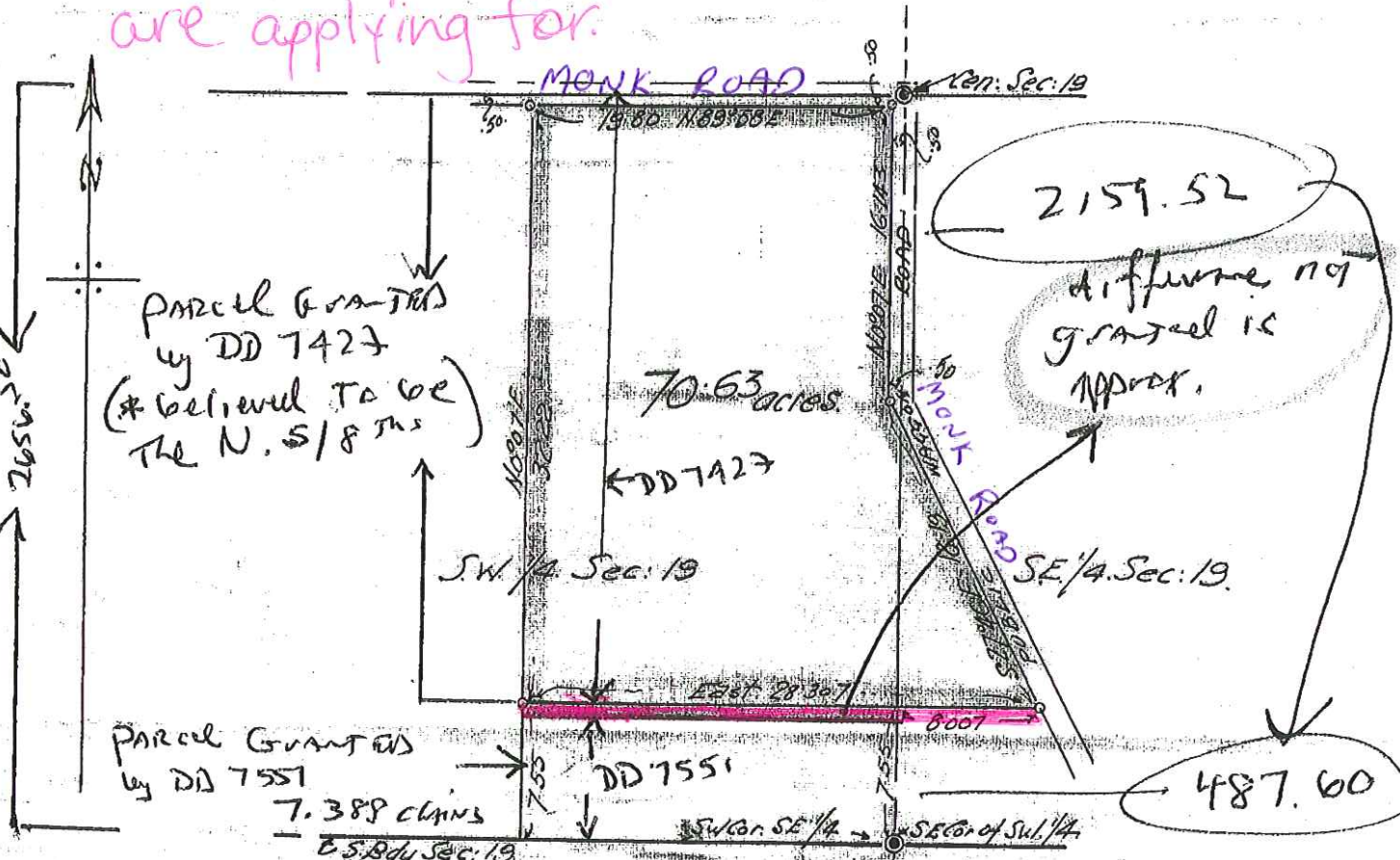
part. South 1/2 Sec. 19 T. 19 R. 8 W. 6 N.M.

Province of B.C.
Scale: 10 chs = 1 inch.

Map No. B.1148
Deposited Dec. 27/1913
G. A. J. J. J.
District Registrar

Area in pink is Crown Land we are applying for.

Width by Dominion Survey = 40025 chains



Parcel Granted by DD 7427
(*believed to be) the N. S/8ths

70.63 acres
DD 7427

Parcel Granted by DD 7551
7.388 chins
E.S. Bdy Sec. 19

2159.52
difference not granted is approx.

487.60

Registered Owner: Geo. D. McEwen

Witness: John. Monk

area granted
TOTALS length
of 2647.12

Dominion Survey = 2650.0
Less 2647.12
Rem 9.38

Section Corners shown thus \odot
Bearings shown are Az. nomic.

Certified Correct
(Sec. 97 L.A. Act of 1913)
G. A. J. J. J. B.C.L.S.

OR 7.55
- 7.3888
= 0.1612 chains = 10.6'