

122°38'0"W

# SITE MAP

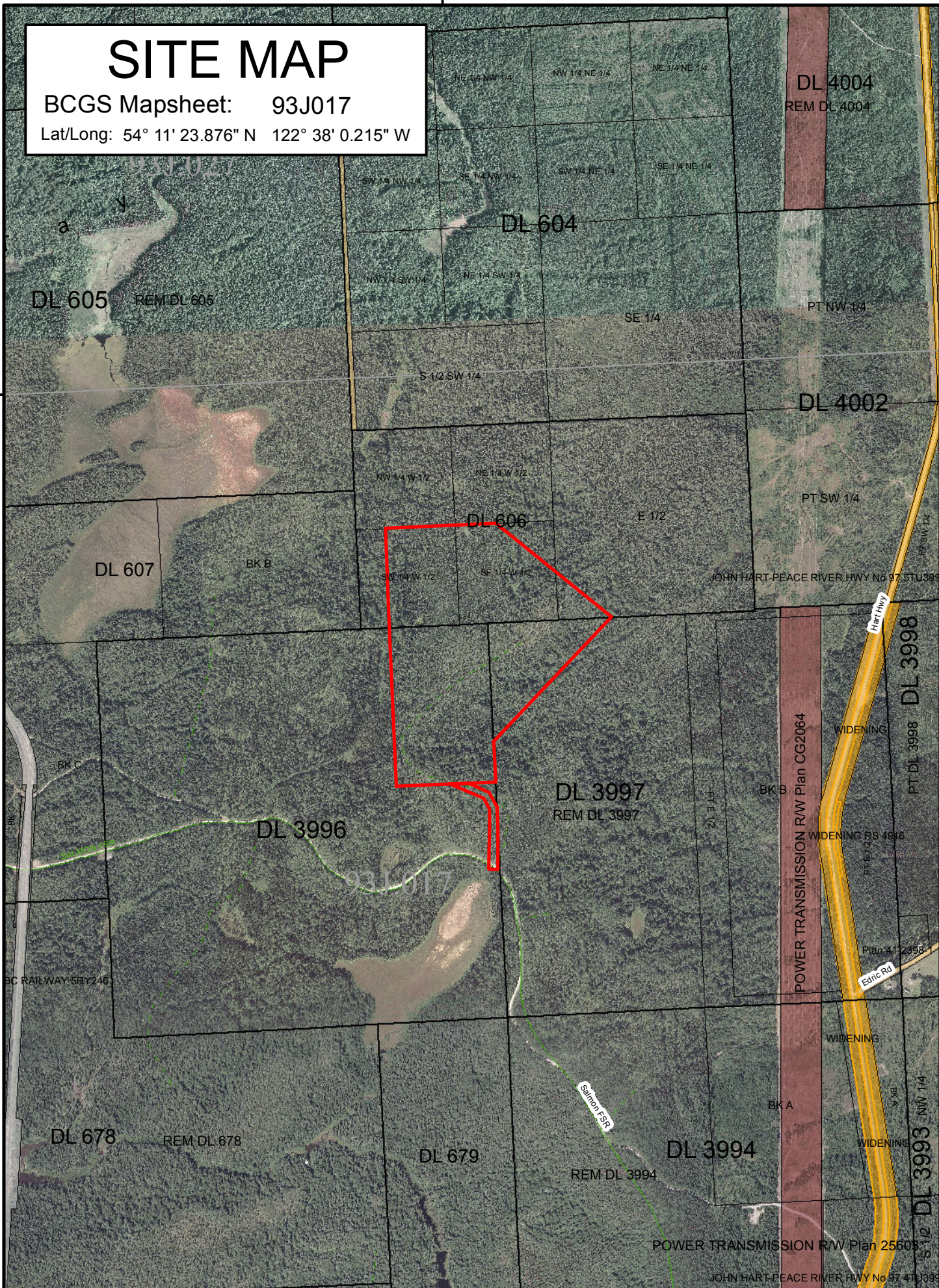
BCGS Mapsheet: 93J017

Lat/Long: 54° 11' 23.876" N 122° 38' 0.215" W

54°12'0"N

54°12'0"N

54°10'0"N



File Number: 7409676

Site # 1 of 1 - APPLICATION Area = 67.02 Ha.

TYPE: RESERVE/NOTATION

PURPOSE: QUARRYING

SUBTYPE: MAP RESERVE

SUBPURPOSE: SAND AND GRAVEL

LOCATION: HART NORTH

ORTHOPHOTO YEAR: 2002/06

Produced by  
Ministry of Natural Resource Operations  
Northern Service Centre  
FrontCounterBC  
Date: November 26, 2013

Scale: 1:20,000 \*

\* if printed on 8.5X14 page

Projection: BC Albers  
Datum: NAD 83

Meters

0 250 500 750



## Legend

- |                          |                              |
|--------------------------|------------------------------|
| Crown Land Application   | Protected Areas              |
| Primary Survey Parcel    | Provincial Park              |
| Subdivision              | Protected Area               |
| Municipality             | OIC Ecological Reserve       |
| Surveyed Rights of Way   | Recreation Area              |
| Gas/Oil R/W District Lot | Base Mapping Features (20K)  |
| Power Transmission R/W   | River or Stream              |
| Gas/Oil R/W              | River or Stream - Dry        |
| Telecom R/W District Lot | Lake                         |
| Miscellaneous R/W        | Reservoir - Definite         |
| Transportation Corridors | Glacier/Icefield             |
| Highway                  | Contour - 20m interval       |
| Railway                  | Transportation - Lines (20K) |
| Surveyed Road R/W        | Airfield                     |
|                          | Road                         |
|                          | Forest Service Road          |
|                          | Road Permit                  |
|                          | Trail                        |
|                          | Rail Line                    |

All measurements are approximate.