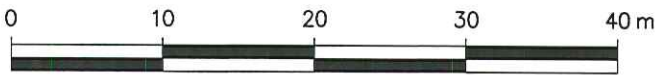


DETAILED SITE MAP TO ACCOMPANY CROWN LAND TENURE APPLICATION FOR A PORTION OF DL 219s SDYD

1065 LAKESHORE DRIVE W, PENTICTON, BC

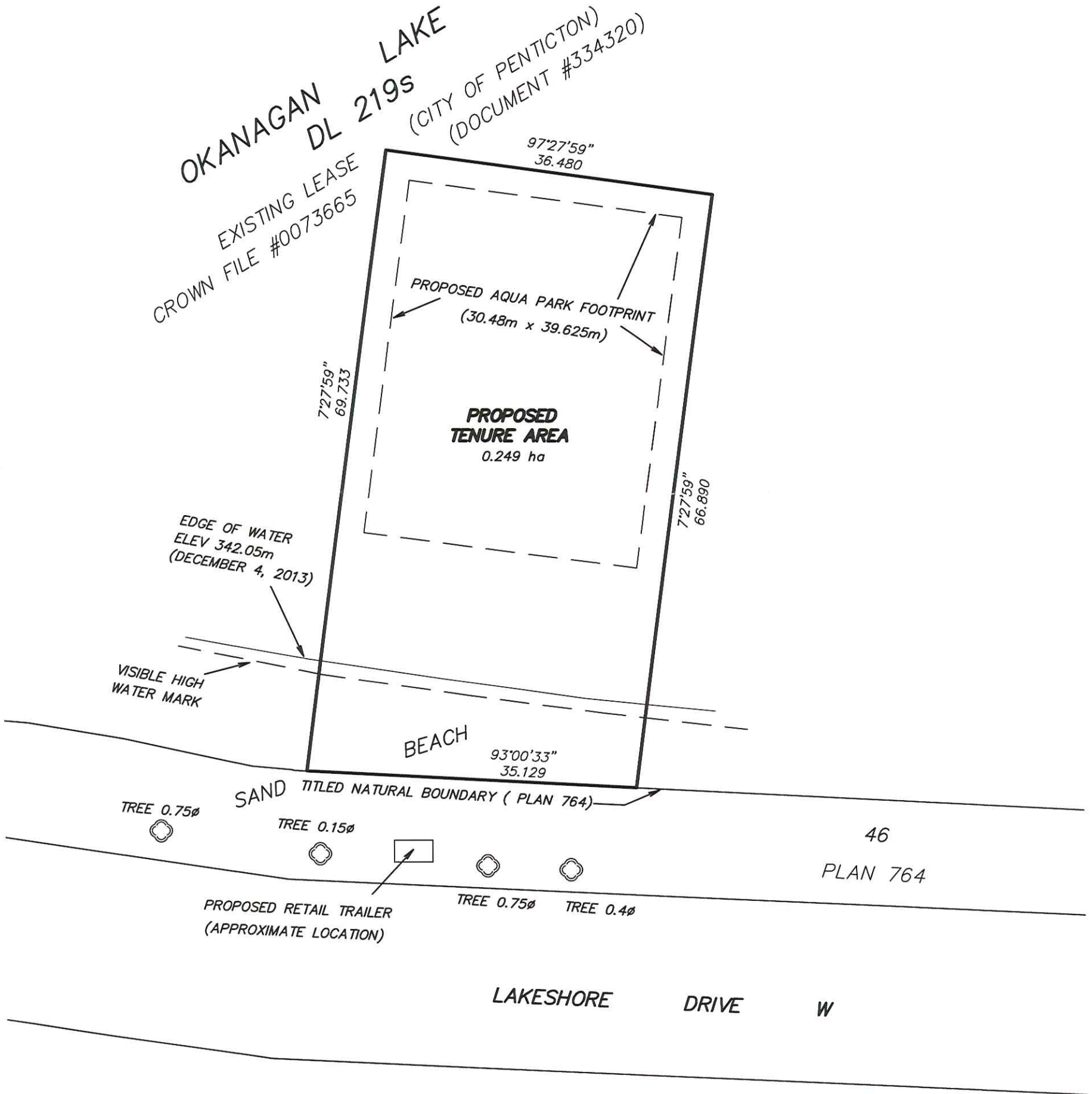
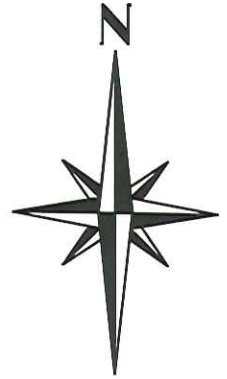
BCGS 82E.052

SCALE : 1:500



(ALL DIMENSIONS ARE IN METRES)

THE INTENDED PLOT SIZE OF THIS PLAN IS 280mm IN WIDTH BY 432mm IN HEIGHT, B SIZE, WHEN PLOTTED AT A SCALE OF 1:500



LEGEND

BEARINGS ARE GRID. DIMENSIONS AND AREAS SHOWN ARE BASED ON LAND TITLES OFFICE RECORDS AND ARE SUBJECT TO FINAL SURVEY.

PROPOSED SITE IMPROVEMENT INFORMATION IS BASED ON PROPOSAL DRAWINGS PROVIDED BY THE CITY OF PENTICTON.

THIS PLAN LIES WITHIN THE REGIONAL DISTRICT OF OKANAGAN SIMILKAMEEN.

McELHANNEY ASSOCIATES
PROFESSIONAL LAND SURVEYORS
#102-130 NANAIMO AVENUE W.,
PENTICTON, B.C. V2A 8G1
TEL: 250-492-7399
FAX: 250-492-5488

OUR FILE NO. 3064-0-2000
OUR DRAWING NO. 3064-0-CROWN-APP-R1.DWG