

COORDINATE TABLE NAD83 ZONE 10

DESCRIPTION	NORTHING	EASTING	LAT.	LONG.	EL.
SITE BC1645	5465762.06	624357.95	49.33190	-121.28834	696.34
POWER POLE	5465281	624289	49.32759	-121.28944	

Electrical routing:
 -From the BC Hydro Pole at highway 3
 -Above ground along the existing dirt road -New utility poles
 -High voltage to the tower compound
 -Hydro transformer at the tower compound.

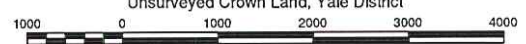


LEGEND:
 All distances are in metres and decimals thereof.

- Denotes Private Land
- Denotes Crown Land
- Denotes highway
- Denotes site access
- Denotes secondary road
- Denotes site access



SKETCH PLAN SHOWING ACCESS TO PROPOSED SITE BC1645
 Unsurveyed Crown Land, Yale District



The intended plot size of this plan is 432mm in width by 280mm in height when plotted at a scale of 1: 50000 (use B size sheet) Sheet 1 of 1

Rev	Revision Description	Date(Y/M/D)	By
0	Original Plan Prepared	2012/05/09	MRE
1	Revised Title Block	2012/06/28	MRE
2	Added Power RW	2012/09/05	MRE
3	Revised Power RW	2013/01/21	BKS

FOCUS

FOCUS: BC1645 ACCESS SKETCH

REV. 3

✓G

**TOPOGRAPHIC SURVEY OF PROPOSED TOWER SITE BC1645,
WITHIN UNSURVEYED CROWN LAND YALE DIVISION OF YALE
DISTRICT**

BCGS: 92H.034



All distances are in metres and decimals thereof.

The intended plot size of this plan is 560mm in width by 864mm in height (D size) when plotted at a scale of 1:5000.

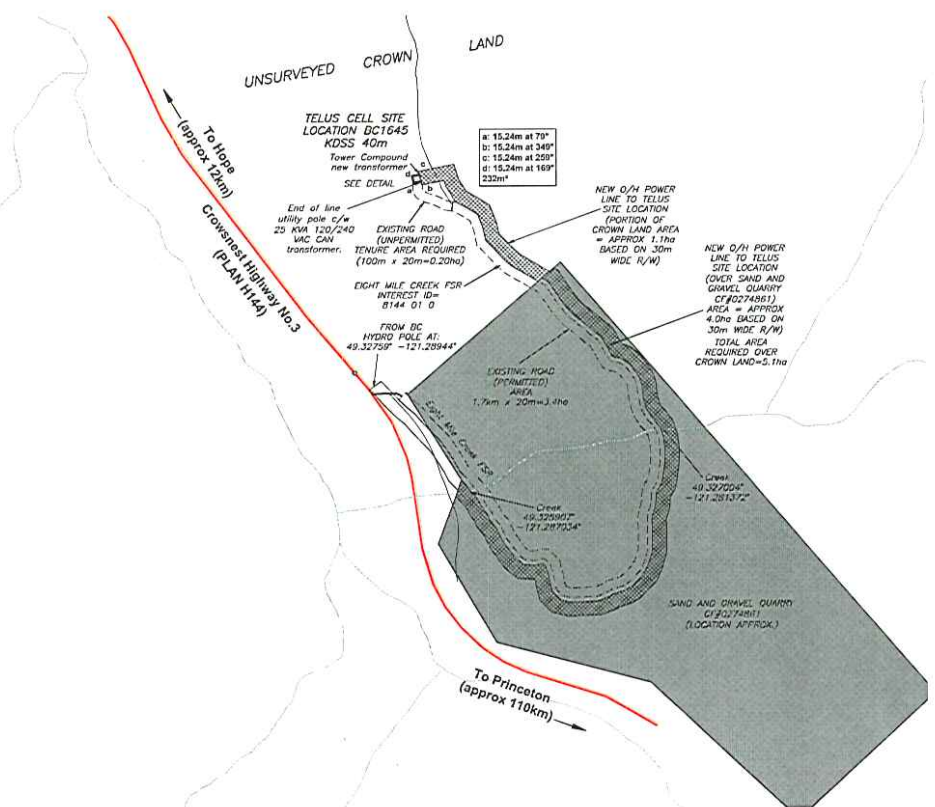
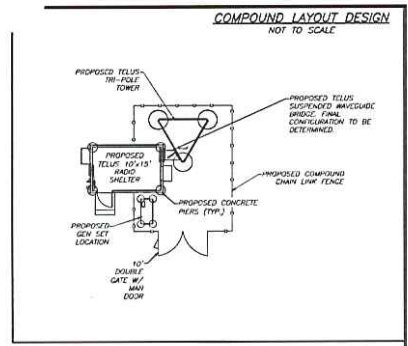
This plan lies within the Fraser Valley Regional District
Date of field survey June 2, 2012

Contour interval 1.0m

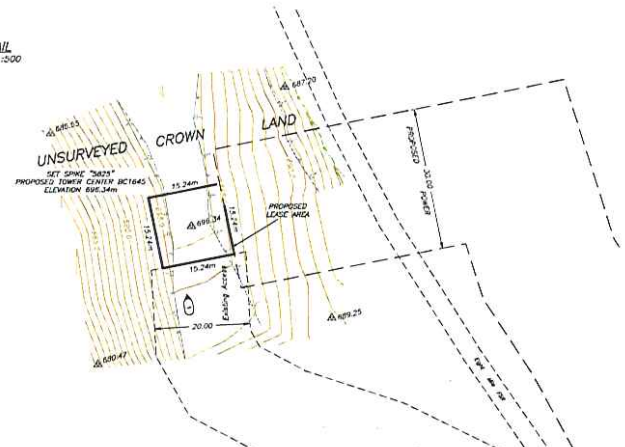
Note: Nearest Power Pole, on Highway 780m from proposed tower location.

Elevations are geodetic derived from differential dual frequency GNSS observation to Summerland ACP (GCM #508204), published elevation = 445.29m

- LEGEND**
- denotes spike set
 - denotes stake set
 - denotes elevation
 - denotes photo taken
 - denotes edge of road
 - denotes drainage
 - denotes tree



DETAIL
SCALE 1:500



COORDINATE TABLE
NAD83 ZONE 10

DESCRIPTION	NORTHING	EASTING	LAT	LONG	LAT DMS	LONG DMS	GROUND ELEVATION
SITE BC1645	946792.96	824037.96	49 33'10"	-121 28'34"	49°19'54.951"	-121°17'18.047"	698.34
NEAREST POWER POLE	946558	824113	49 33'07"	-121 29'19"	49°19'44.917"	-121°17'38.497"	

PROPOSED TOWER HEIGHT: 40m



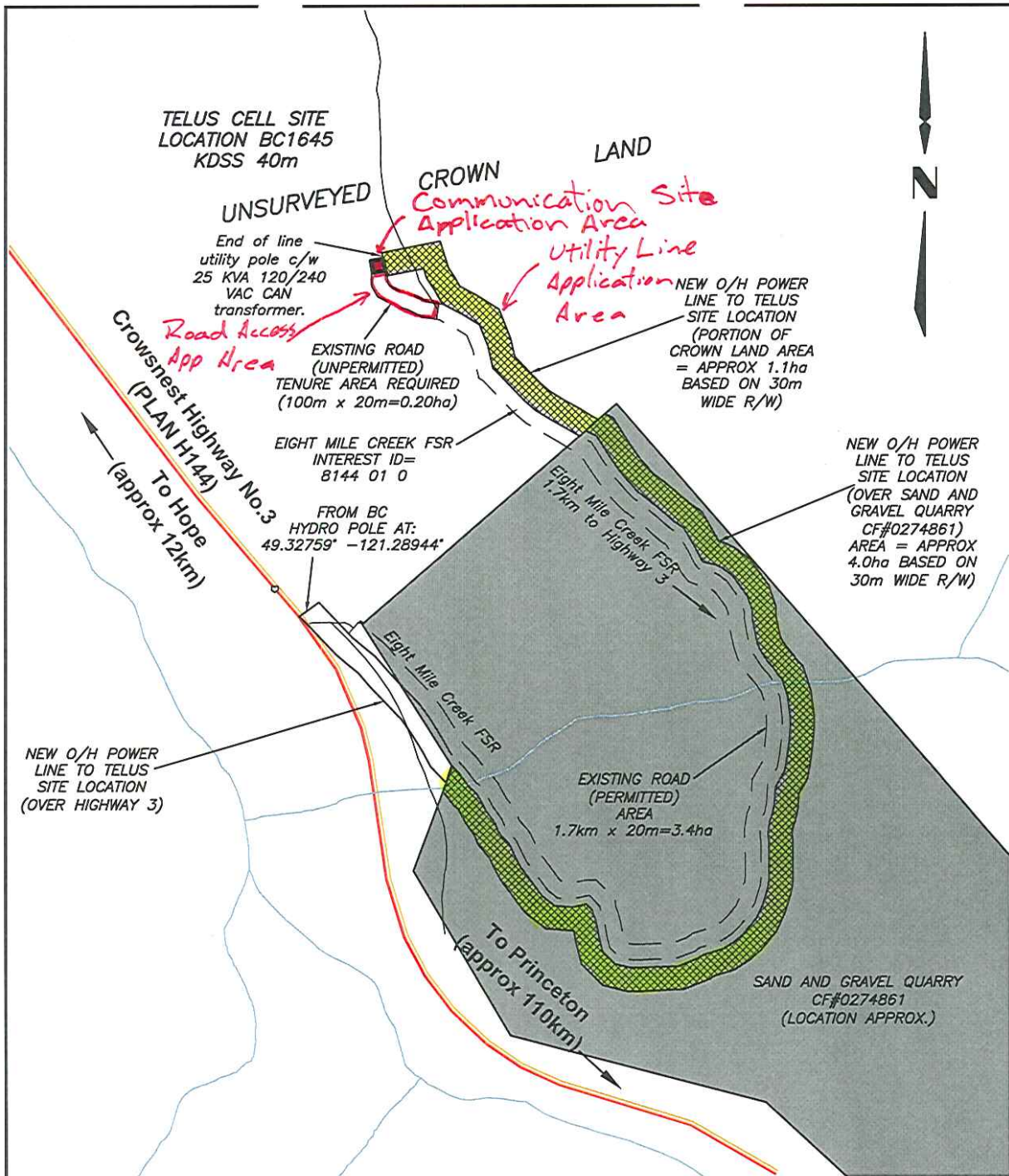
FOCUS
TELUS

SHEET TITLE
SITE BC1645 TOPOGRAPHIC SURVEY

DATE	DATE	CHANGED BY	SCALE
2012-05-08	2012-05-08	RM	1:5000

PROJECT NO. BC1645 SITE PLAN REV 3

VDI



COORDINATE TABLE NAD83 ZONE 10

DESCRIPTION	NORTHING	EASTING	LAT.	LONG.	EL.
SITE BC1645	5465762.06	624357.95	49.33190	-121.28834	696.34
POWER POLE	5465281	624289	49.32759	-121.28944	

Electrical routing:
 -From the BC Hydro Pole at highway 3
 -Above ground along the existing dirt road
 -New utility poles
 -High voltage to the tower compound
 -Hydro transformer at the tower compound.



LEGEND:
 All distances are in metres and decimals thereof.

- denotes water course
- denotes hydro/tel lines
- denotes highway
- denotes site access
- denotes secondary road



SKETCH PLAN SHOWING PROPOSED SITE
BC1645
 SOUTHEAST OF HOPE

50 0 50 100 150 200

The intended plot size of this plan is 432mm in width by 280mm in height when plotted at a scale of 1: 2500 (use B size sheet) Sheet 1 of 1

BCGS: 92H034 FOCUS: BC1645 KEY PLAN REV. 3

FOCUS www.focus.ca

Rev	Revision Description	Date(Y/M/D)	By
0	Original Plan Prepared	2012/05/22	MRE
1	Revised Title Block	2012/06/28	MRE
2	Added Power RW	2012/09/05	MRE
3	Revised Power RW	2013/01/21	BKS

D2V