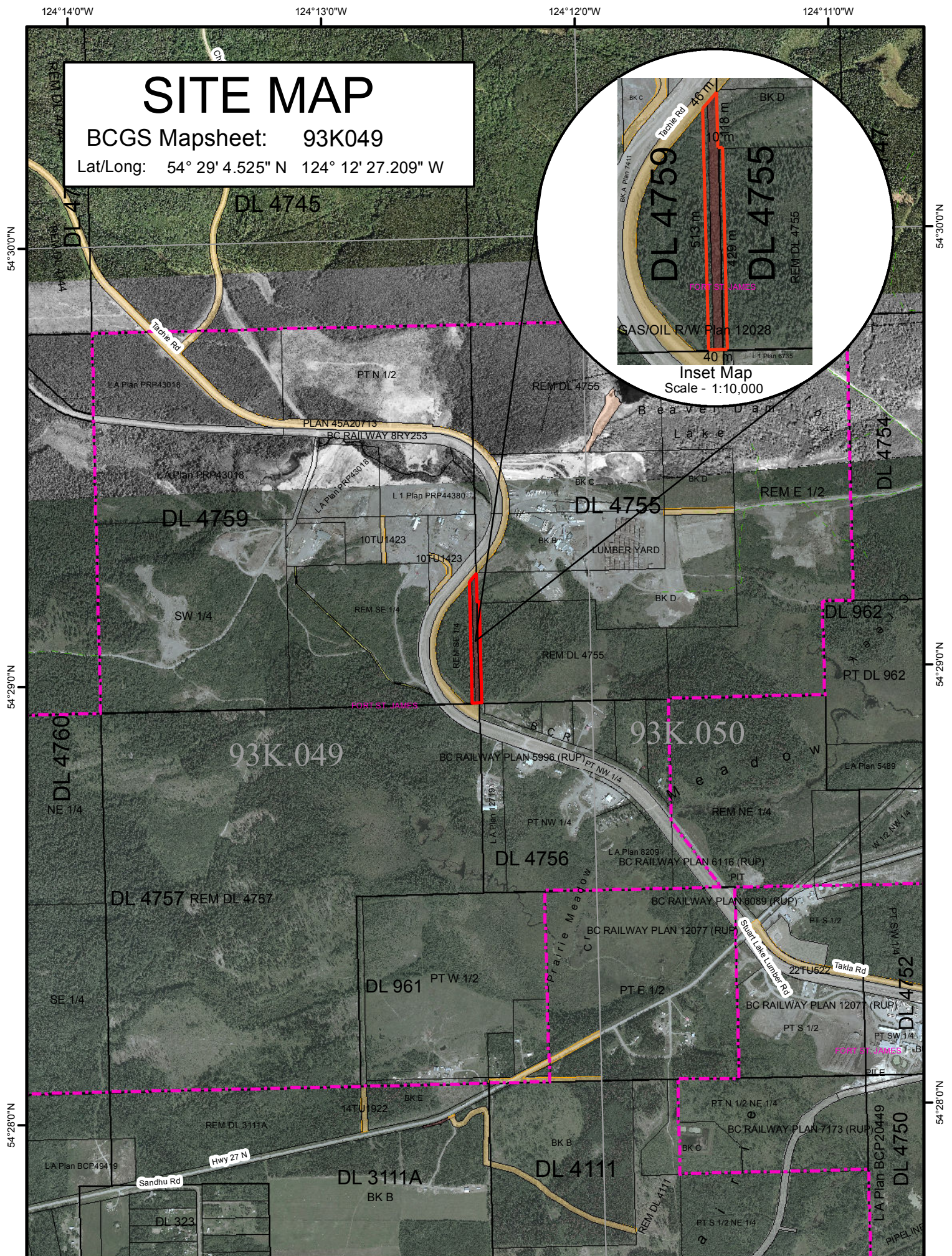
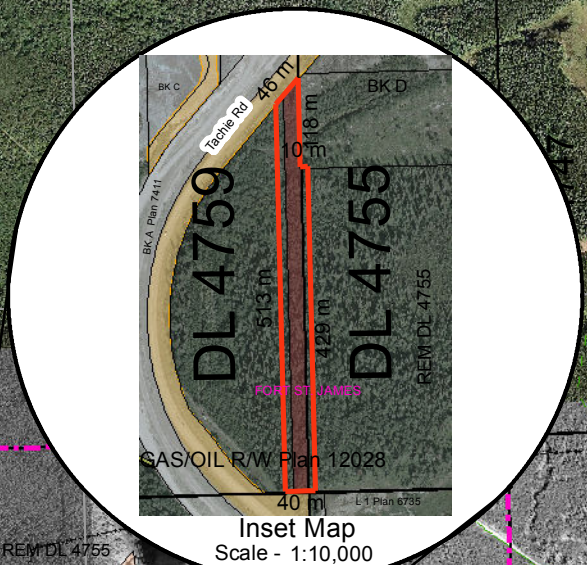


BCGS Mapsheet: 93K049
Lat/Long: 54° 29' 4.525" N 124° 12' 27.209" W

Lat/Long: 54° 29' 4.525" N 124° 12' 27.209" W



- Surveyed Rights of Way**

 - Crown Land Application
 - Primary Survey Parcel
 - Subdivision
 - Municipality
 - Surveyed Road R/W
 - Gas/Oil R/W District Lot
 - Power Transmission R/W
 - Gas/Oil R/W
 - Telecom R/W District Lot
 - Miscellaneous R/W

Protected Areas

 - Provincial Park
 - Protected Area
 - OIC Ecological Reserve
 - Recreation Area

Base Mapping Features (20K)

 - River or Stream
 - River or Stream - Dry
 - Lake
 - Reservoir - Definite
 - Glacier/Icefield
 - Contour - 20m interval

Transportation Corridors

 - Highway
 - Railway
 - Surveyed Road R/W

Transportation - Lines (20K)

 - Airfield
 - Road
 - Forest Service Road
 - Road Permit
 - Trail
 - Rail Line

All measurements are approximate.