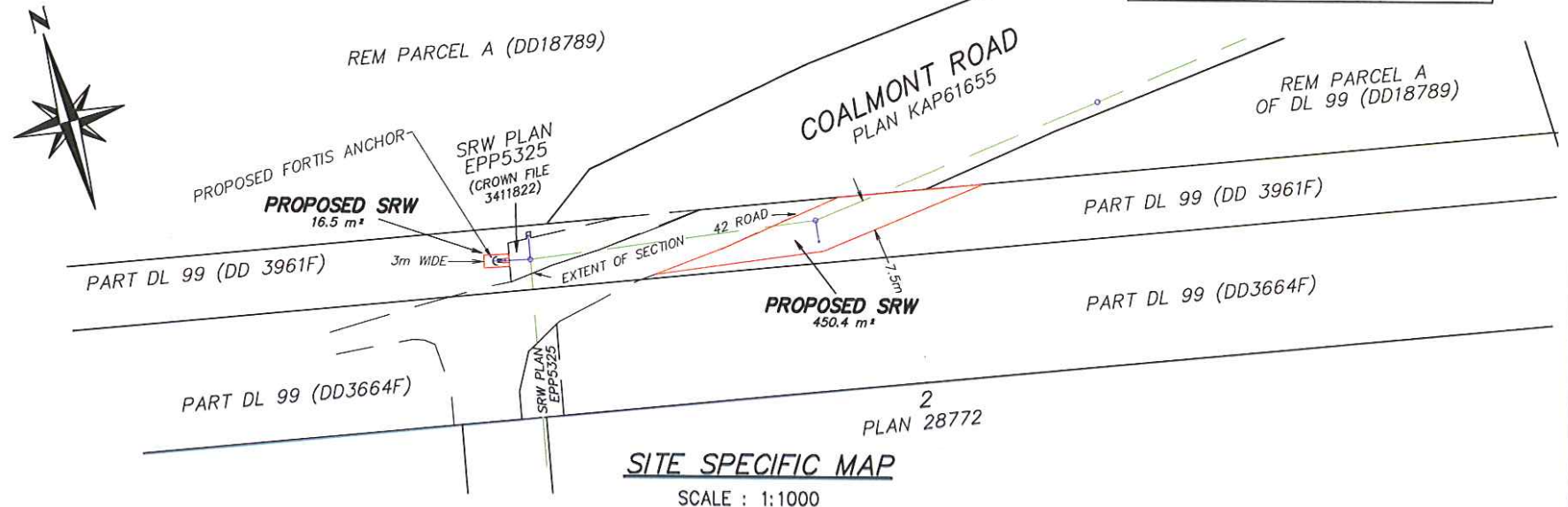
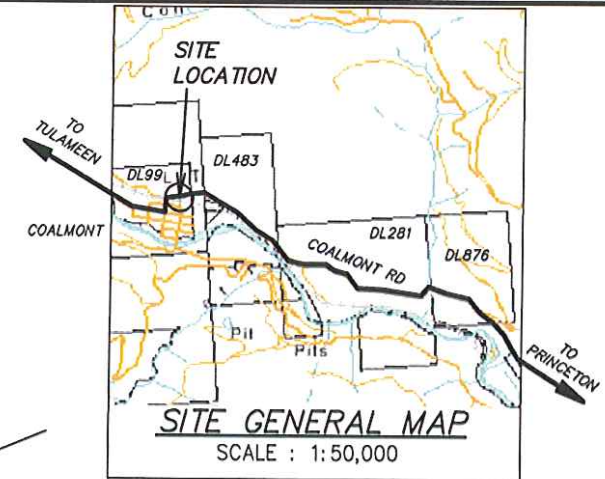


SKETCH SHOWING PROPOSED ELECTRICAL RIGHT OF WAY OVER PART OF THAT PART OF DISTRICT LOT 99 SHOWN COLORED RED ON PLAN ATTACHED TO DD3961F; YALE DIVISION YALE DISTRICT EXCEPT PLAN 28772

BCGS 92H.057

BOOK OF REFERENCE		
PARCEL IDENTIFIER	DESCRIPTION	AREA REQUIRED
015-014-495	THAT PART OF DISTRICT LOT 99 SHOWN COLORED RED ON PLAN ATTACHED TO DD3961F; YDID EXCEPT PLAN 28772	16.5 m ²
015-014-495	THAT PART OF DISTRICT LOT 99 SHOWN COLORED RED ON PLAN ATTACHED TO DD3961F; YDID EXCEPT PLAN 28772	450.4 m ²
TOTAL		466.9 m ²



NOTE: DIMENSIONS AND AREAS SHOWN ARE BASED ON LAND TITLES OFFICE RECORDS AND ARE SUBJECT TO FINAL SURVEY.

- DENOTES PROPOSED SRW OVER CROWN LAND
- - - DENOTES CENTRELINE OF OVERHEAD ELECTRICAL
- DENOTES EXISTING FORTISBC POLE LOCATIONS
- ↑ DENOTES EXISTING FORTISBC ANCHOR LOCATIONS
- ↓ DENOTES PROPOSED FORTISBC ANCHOR LOCATIONS

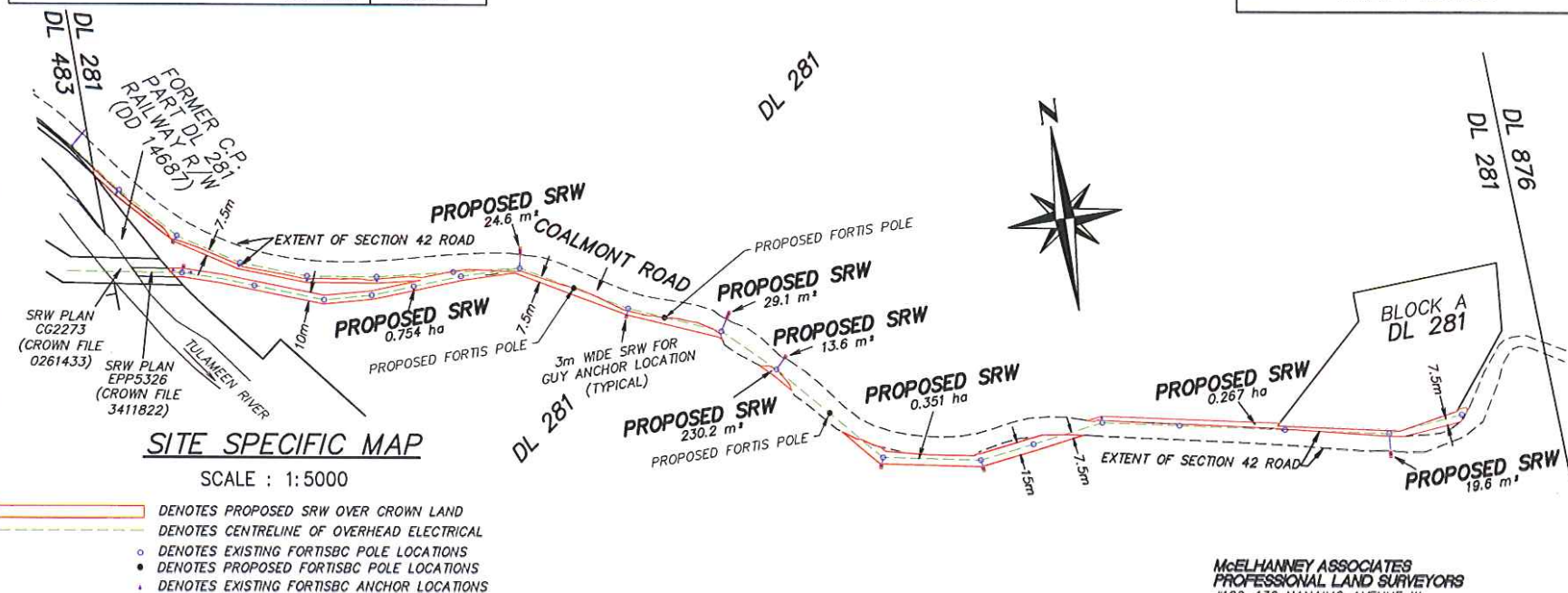
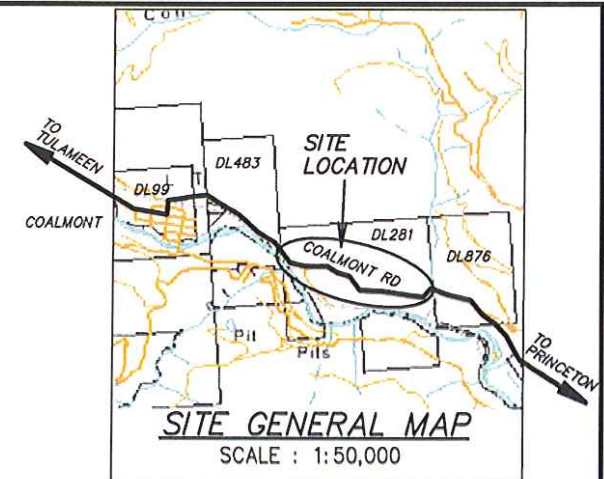
McELHANNEY ASSOCIATES
PROFESSIONAL LAND SURVEYORS
#102-130 NANAIMO AVENUE W.,
PENTICTON, B.C. V2A 8G1

TEL: 250-492-7399 OUR FILE NO. 2422-03054-0
FAX: 250-492-5488 OUR DRAWING NO. 3054-0-BASE-R2.DWG

SKETCH SHOWING PROPOSED ELECTRICAL RIGHT OF WAY OVER PART OF DISTRICT LOT 281 YALE DIVISION YALE DISTRICT

BCGS 92H.057

BOOK OF REFERENCE	
DESCRIPTION	AREA REQUIRED
DISTRICT LOT 281 YALE DIVISION YALE DISTRICT	0.754 ha
DISTRICT LOT 281 YALE DIVISION YALE DISTRICT	24.6 m ²
DISTRICT LOT 281 YALE DIVISION YALE DISTRICT	29.1 m ²
DISTRICT LOT 281 YALE DIVISION YALE DISTRICT	13.6 m ²
DISTRICT LOT 281 YALE DIVISION YALE DISTRICT	230.2 m ²
DISTRICT LOT 281 YALE DIVISION YALE DISTRICT	0.351 ha
DISTRICT LOT 281 YALE DIVISION YALE DISTRICT	0.267 ha
DISTRICT LOT 281 YALE DIVISION YALE DISTRICT	19.6 m ²
TOTAL AREA	1.40 ha

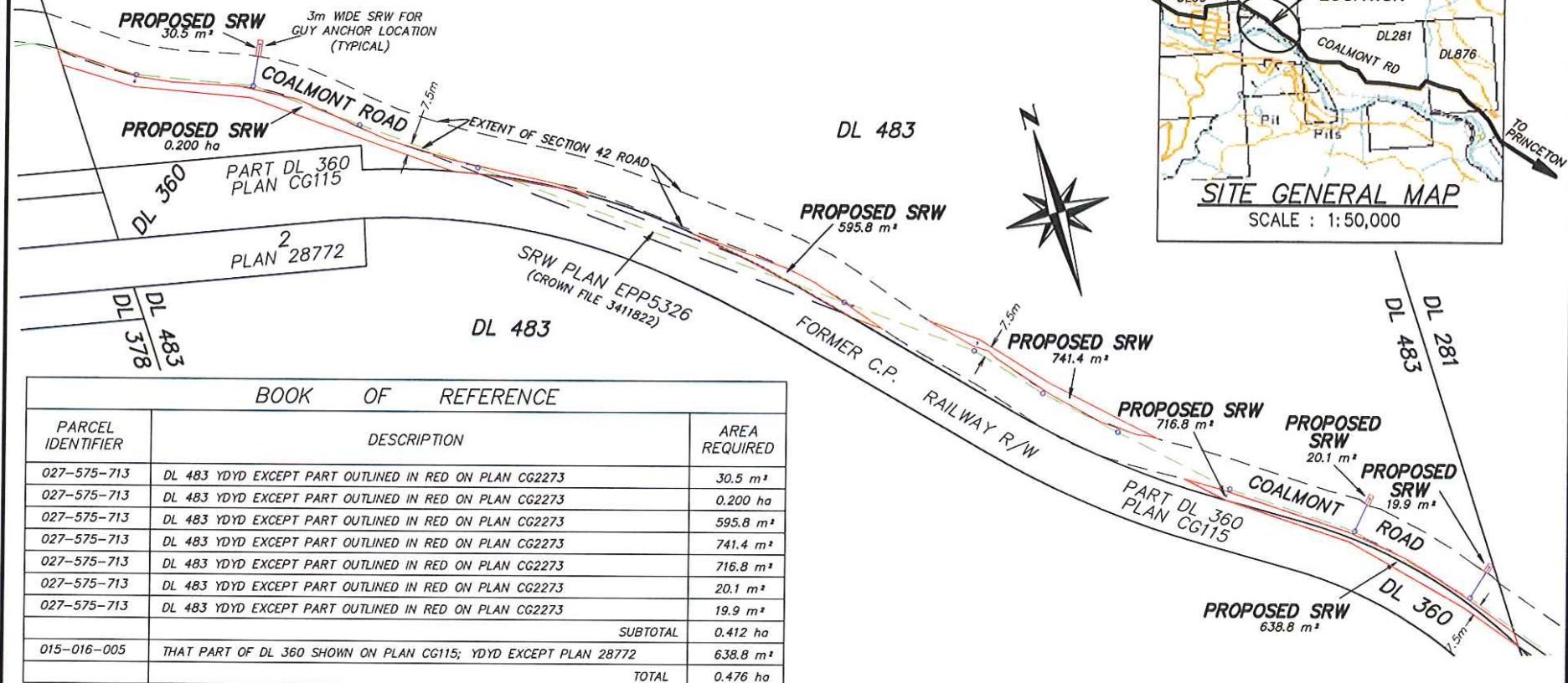


NOTE: DIMENSIONS AND AREAS SHOWN ARE BASED ON LAND TITLES OFFICE RECORDS AND ARE SUBJECT TO FINAL SURVEY.

McELHANNAY ASSOCIATES
PROFESSIONAL LAND SURVEYORS
#102-130 NANAIMO AVENUE W.,
PENTICTON, B.C. V2A 8G1
TEL: 250-492-7399 OUR FILE NO. 2422-03054-0
FAX: 250-492-5488 OUR DRAWING NO. 3054-0-BASE-R2.DWG

SKETCH SHOWING PROPOSED ELECTRICAL RIGHT OF WAY OVER PART OF:
1) DL 483 YDYD EXCEPT PART OUTLINED IN RED ON PLAN CG2273 AND
2) THAT PART OF DL 360 SHOWN ON PLAN CG115; YDYD
EXCEPT PLAN 28772

BCGS 92H.057



BOOK OF REFERENCE

PARCEL IDENTIFIER	DESCRIPTION	AREA REQUIRED
027-575-713	DL 483 YDYD EXCEPT PART OUTLINED IN RED ON PLAN CG2273	30.5 m ²
027-575-713	DL 483 YDYD EXCEPT PART OUTLINED IN RED ON PLAN CG2273	0.200 ha
027-575-713	DL 483 YDYD EXCEPT PART OUTLINED IN RED ON PLAN CG2273	595.8 m ²
027-575-713	DL 483 YDYD EXCEPT PART OUTLINED IN RED ON PLAN CG2273	741.4 m ²
027-575-713	DL 483 YDYD EXCEPT PART OUTLINED IN RED ON PLAN CG2273	716.8 m ²
027-575-713	DL 483 YDYD EXCEPT PART OUTLINED IN RED ON PLAN CG2273	20.1 m ²
027-575-713	DL 483 YDYD EXCEPT PART OUTLINED IN RED ON PLAN CG2273	19.9 m ²
	SUBTOTAL	0.412 ha
015-016-005	THAT PART OF DL 360 SHOWN ON PLAN CG115; YDYD EXCEPT PLAN 28772	638.8 m ²
	TOTAL	0.476 ha

SITE SPECIFIC MAP

SCALE : 1:2500

- DENOTES PROPOSED SRW OVER CROWN LAND
- DENOTES CENTRELNE OF OVERHEAD ELECTRICAL
- DENOTES FORTISBC POLE LOCATIONS
- + DENOTES FORTISBC ANCHOR LOCATIONS

NOTE: DIMENSIONS AND AREAS SHOWN ARE BASED ON LAND TITLES OFFICE RECORDS AND ARE SUBJECT TO FINAL SURVEY.

McELHANNY ASSOCIATES
PROFESSIONAL LAND SURVEYORS
 #102-130 NANAIMO AVENUE W.,
 PENTICTON, B.C. V2A 8G1

TEL: 250-492-7399 OUR FILE NO. 2422-03054-0
 FAX: 250-492-5488 OUR DRAWING NO. 3054-0-BASE-R2.DWG