

# Crown Land Tenure, Powell River Regional District

■ APPROXIMATE LOCATION OF PROPOSED  
CROWN LAND TENURE

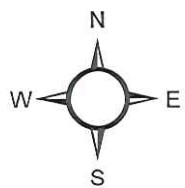
1:50,000



## DISCLAIMER

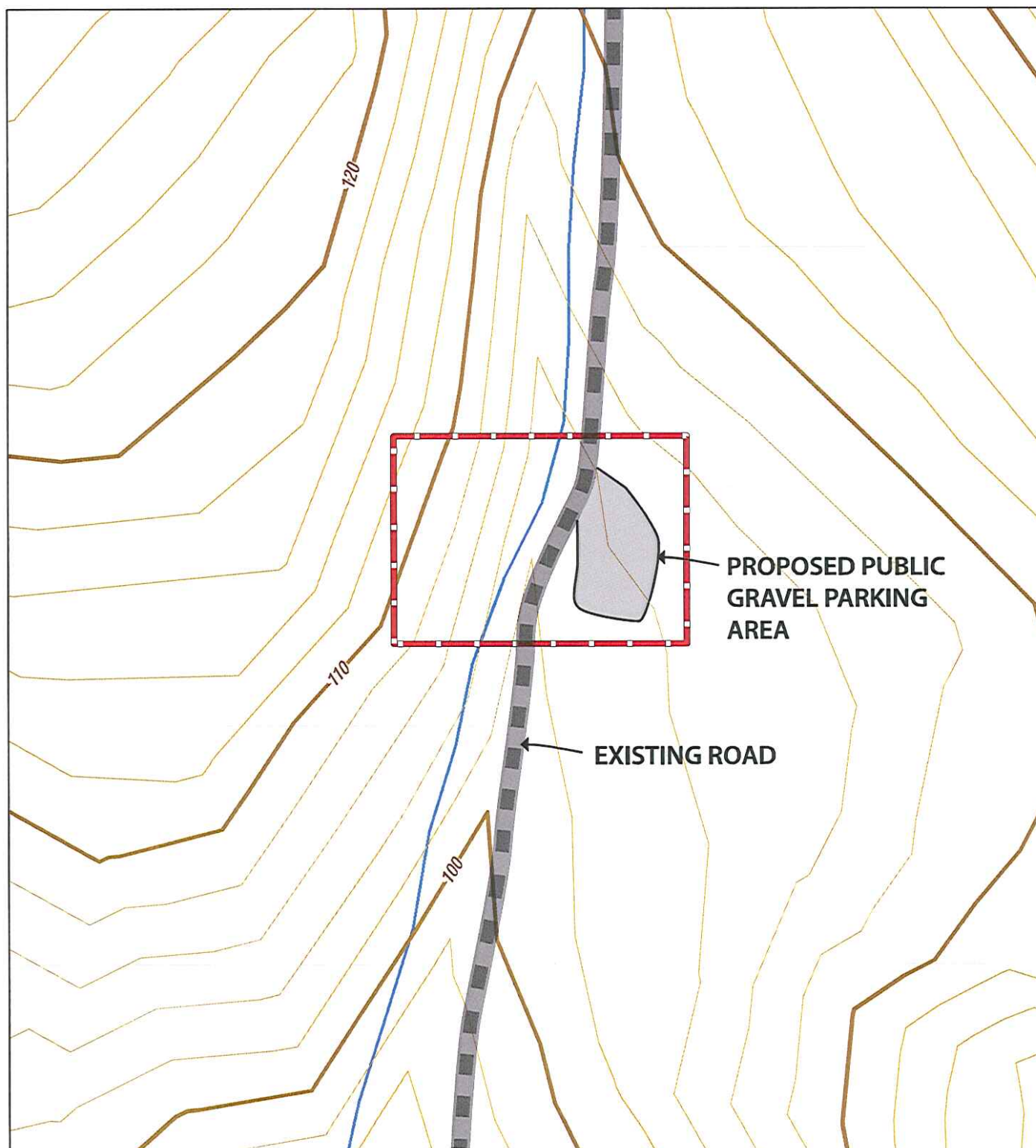
This mapping data has been compiled by the Powell River Regional District using data derived from a number of different sources with varying levels of accuracy. The Powell River Regional District disclaims all responsibility for the accuracy or completeness of this information.

✓  
G



## Crown Land Tenure, Powell River Regional District

1:1,000



### DISCLAIMER

This mapping data has been compiled by the Powell River Regional District using data derived from a number of different sources with varying levels of accuracy. The Powell River Regional District disclaims all responsibility for the accuracy or completeness of this information.

✓  
D