

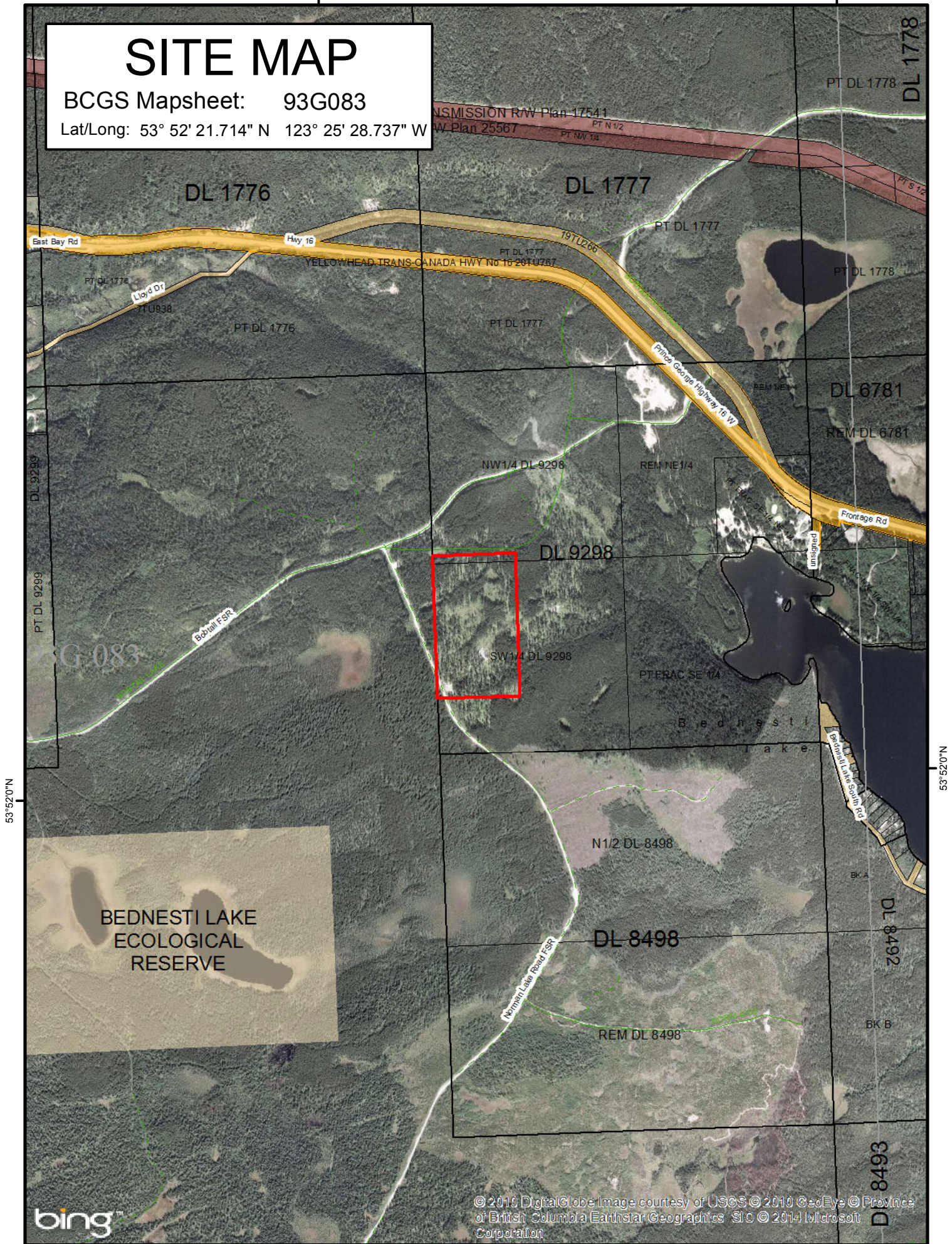
123°26'0"W

123°24'0"W

# SITE MAP

BCGS Mapsheet: 93G083

Lat/Long: 53° 52' 21.714" N 123° 25' 28.737" W



bing

© 2010 DigitalGlobe Image courtesy of USGS © 2010 GeoEye © Province of British Columbia Earthstar Geographics SIO © 2014 Microsoft Corporation

File Number: 7409729

Site # 1 of 1 - APPLICATION Area = 21 Ha.

TYPE: LICENCE PURPOSE: INDUSTRIAL  
SUBTYPE: LICENCE OF OCCUPATION SUBPURPOSE: LOG HANDLING/STORAGE  
LOCATION: W of BEDNESTI LK ORTHOPHOTO YEAR: N/A

Produced by  
Ministry of Natural Resource Operations  
Northern Service Centre  
FrontCounterBC  
Date: July 4, 2014

Scale: 1:20,000 \*

\* if printed on 8.5X14 page

Projection: BC Albers  
Datum: NAD 83

Meters

0 250 500 750



## Legend

- |                          |                              |
|--------------------------|------------------------------|
| Crown Land Application   | Protected Areas              |
| Primary Survey Parcel    | Provincial Park              |
| Subdivision              | Protected Area               |
| Municipality             | OIC Ecological Reserve       |
| Surveyed Rights of Way   | Recreation Area              |
| Surveyed Road R/W        | Base Mapping Features (20K)  |
| Gas/Oil R/W District Lot | River or Stream              |
| Power Transmission R/W   | River or Stream - Dry        |
| Gas/Oil R/W              | Lake                         |
| Telecom R/W District Lot | Reservoir - Definite         |
| Miscellaneous R/W        | Glacier/Icefield             |
| Transportation Corridors | Contour - 20m interval       |
| Highway                  | Transportation - Lines (20K) |
| Railway                  | Airfield                     |
| Surveyed Road R/W        | Road                         |
|                          | Forest Service Road          |
|                          | Road Permit                  |
|                          | Trail                        |
|                          | Rail Line                    |

All measurements are approximate.