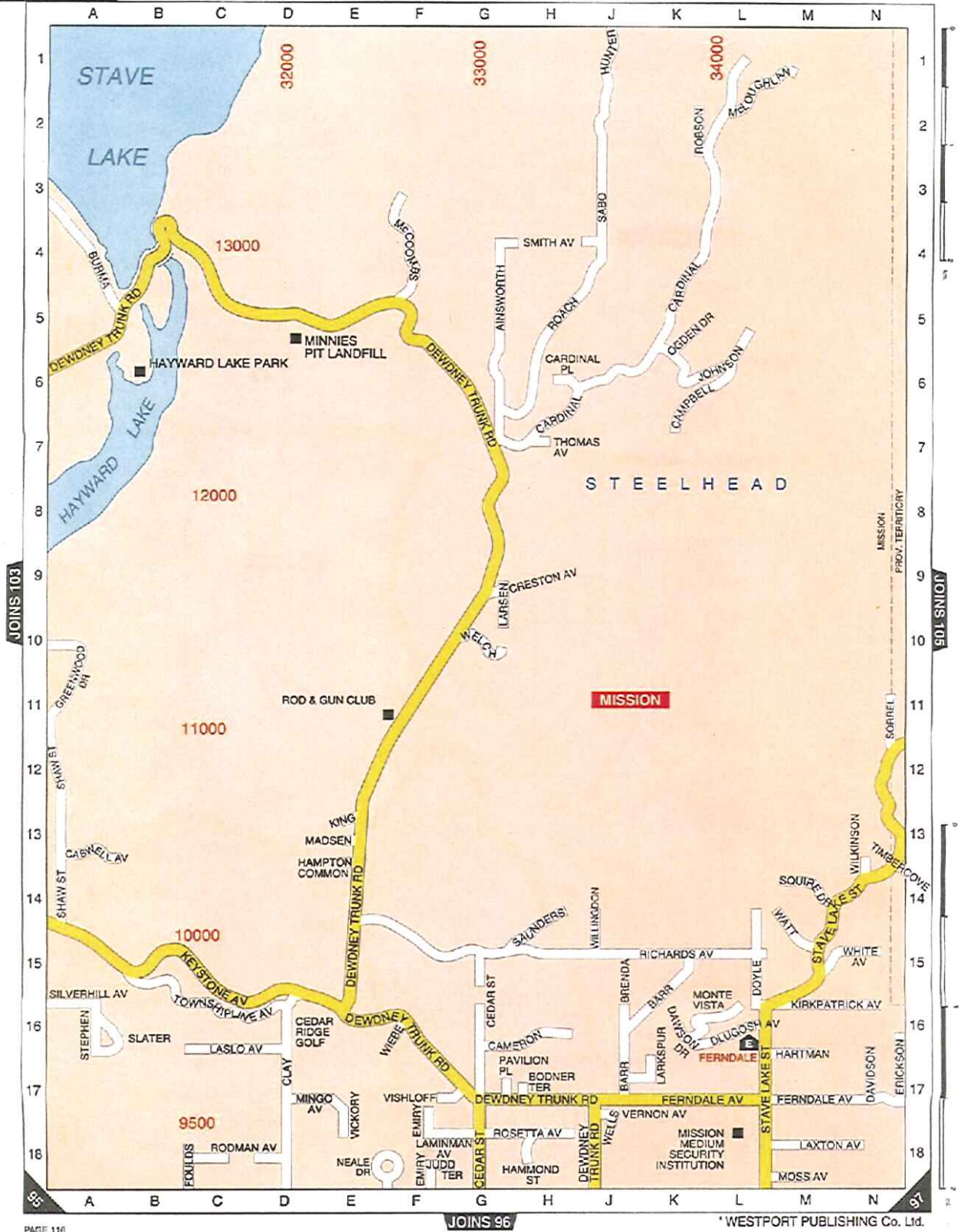


MAP 104



the Club by Wade & Associates Land Surveying Ltd.). A copy of the Metes and Bounds Description that accompanies Figure 2 is provided in Appendix V.

If the Mission Club is successful in obtaining the additional lands surrounding the existing lease footprint (See Figure 2), consideration will be given to expanding the existing facilities. Expanded facilities at the Mission Club will provide greater opportunity for recreational shooting in a safe and controlled environment while reducing the need for the public to shoot their firearms in nearby gravel pits or other sites situated on public or crown lands. Furthermore, encouraging recreational shooting activities at facilities such as the Mission Club will reduce associated refuse left on public and private lands which is a common occurrence where uncontrolled recreational shooting occurs. The expanded footprint will also allow for larger buffer zones between venues and the adjacent District of Mission Tree Farm.

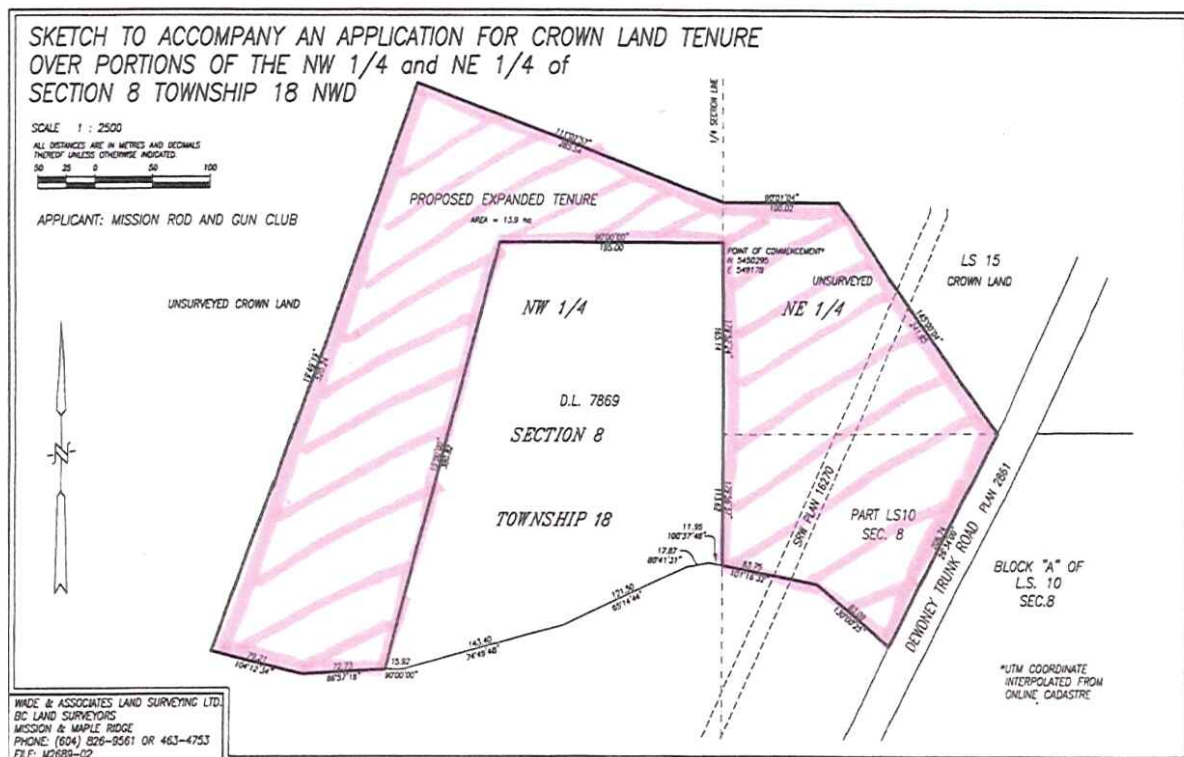


Figure 2: Proposed Expansion Area (Wade & Associates Land Surveying Ltd.)

Expansion and improvements to the facilities at the Mission Club will continue to attract new members as well as out-of-town competitors to any number of the shooting events held at our Club and in turn, can only benefit the local community in terms of additional business whether it be at the local coffee shop, restaurants, gas stations, hotels or with the various retailers in the Mission area. Improvements will also require the purchase of building supplies and hiring of local contractors.