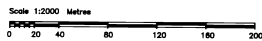


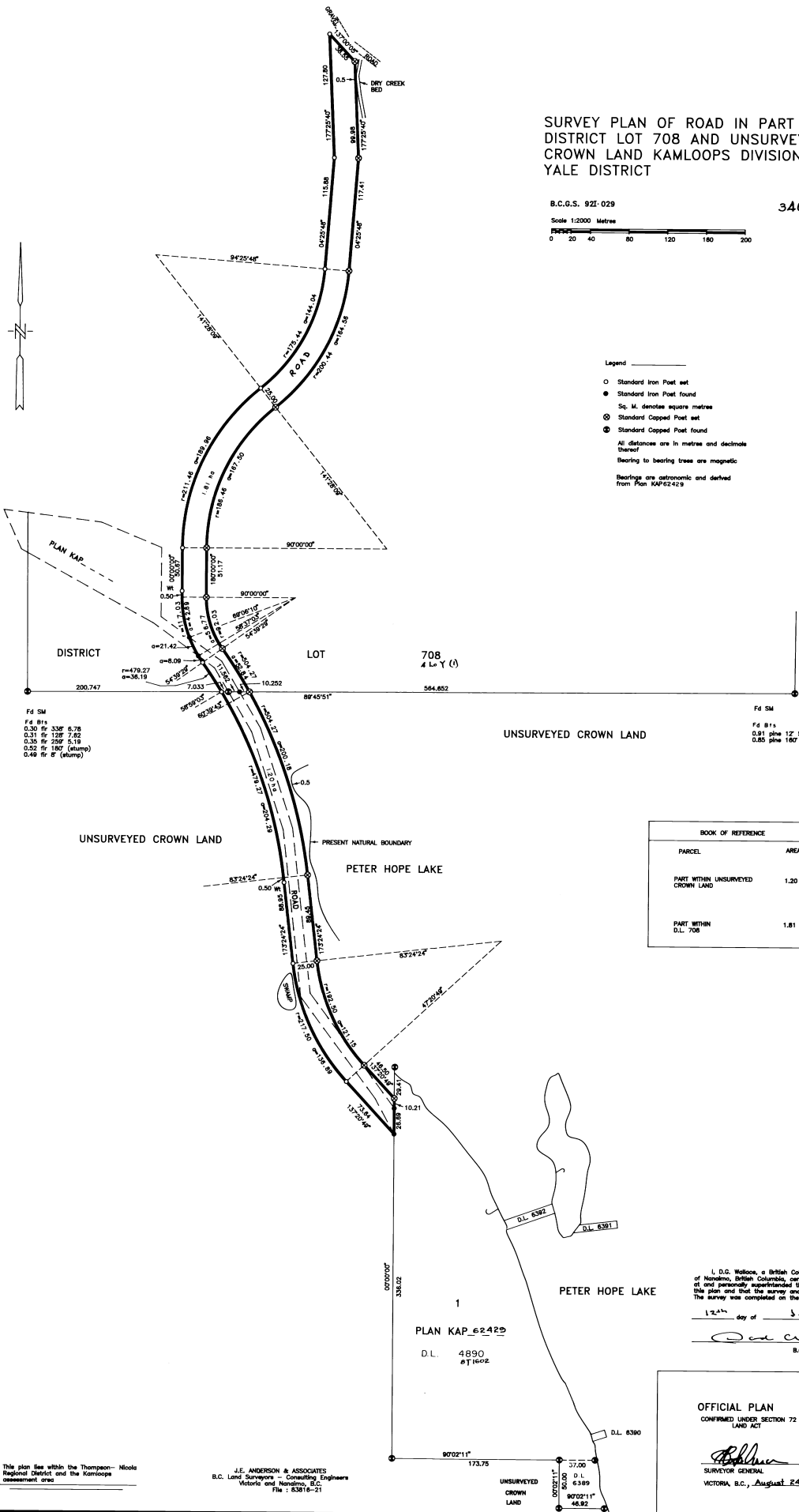
SURVEY PLAN OF ROAD IN PART OF DISTRICT LOT 708 AND UNSURVEYED CROWN LAND KAMLOOPS DIVISION YALE DISTRICT

B.C.G.S. 921 029

3409402



Legend
Standard Iron Post set
Standard Iron Post found
Sq. M. denotes square metres
Standard Capped Post set
Standard Capped Post found
All distances are in metres and decimals thereof
Bearing to bearing trees are magnetic
Bearings are astronomic and derived from Plan S4P62429



Fd SM
Fd B's
0.30 fr 336' 6.78
0.31 fr 128' 7.82
0.32 fr 358' 5.18
0.32 fr 180' (stump)
0.49 fr 8' (stump)

Fd SM
Fd B's
0.81 plus 12' 5.43
0.83 plus 180' 1.41

BOOK OF REFERENCE
PARCEL AREA
PART WITHIN UNSURVEYED CROWN LAND 1.20 ha.
PART WITHIN D.L. 708 1.81 ha.

I, D.C. Wallace, a British Columbia Land Surveyor, of Kamloops, British Columbia, certify that I was present at and personally supervised the survey as represented by this plan and that the survey and plan are correct.
12th day of July, 1999.
D.C. Wallace
B.C.L.S.

OFFICIAL PLAN
CONFIRMED UNDER SECTION 72
LAND ACT
SURVEYOR GENERAL
VICTORIA, B.C., August 24, 1999

This plan lies within the Thompson-Nicola Regional District and the Kamloops assessment area.

J.E. ANDERSON & ASSOCIATES
B.C. Land Surveyors - Consulting Engineers
Victoria and Kamloops, B.C.
File: 83816-21