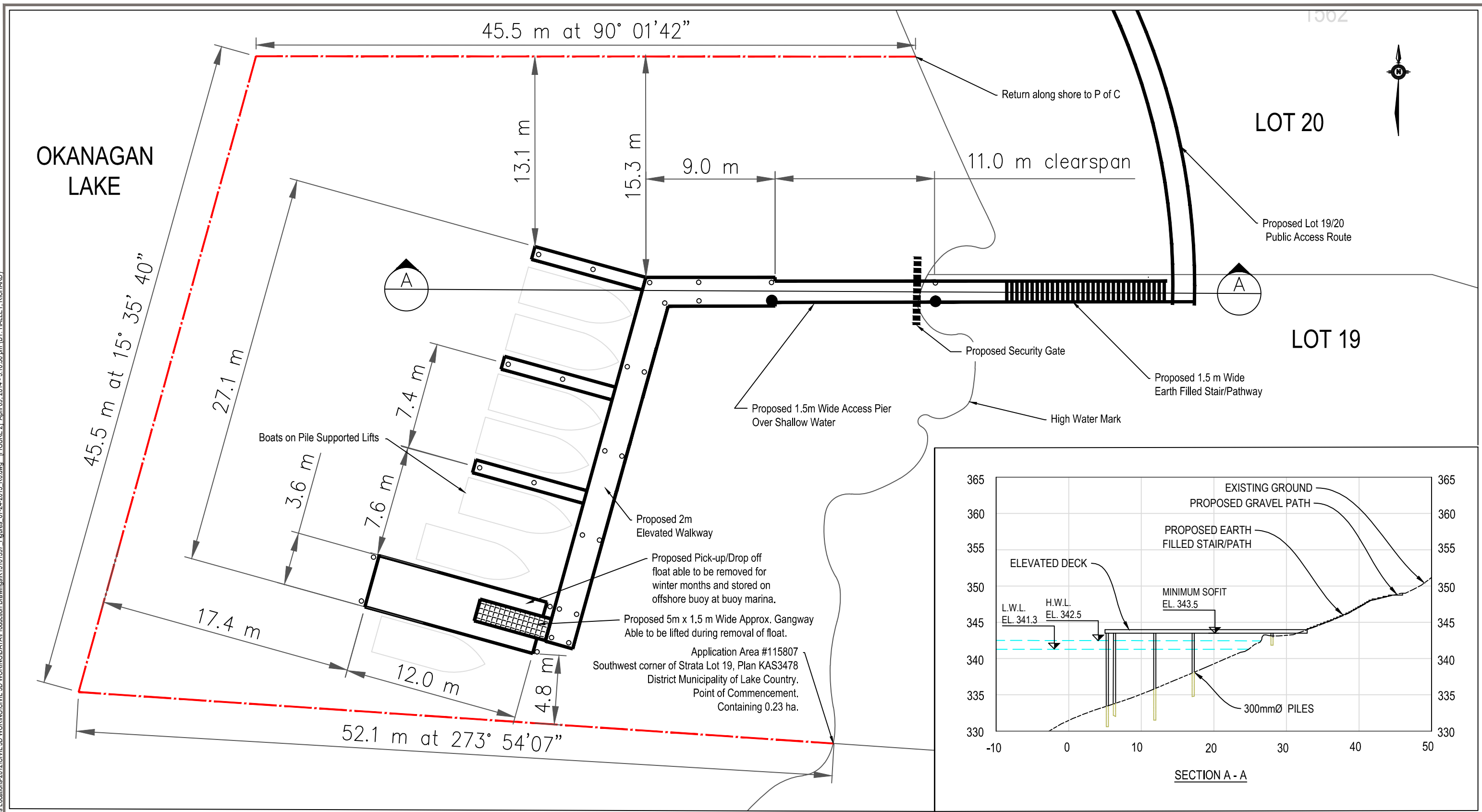


Q:\Kalamna\Drafting\K1311K13 101597\Concepts\Various Locations\2012\CIVIL 3D WORKING\DATA\Production Drawings\K13101597\_Figures\_07-24-2013\_R0.dwg [FIGURE 2] April 09, 2014 - 3:10:56 pm (BY: HALLEY, RICHARD)



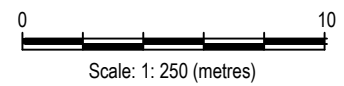
**BOAT MIX:**  
By length of power boat.

8 m (26') OR LESS	5 BOATS
<b>TOTAL</b>	<b>5 BOATS</b>

- NOTES:**
- LWL is at 341.3 m and HWL is at 342.5 m Geodetic Datum.
  - All dimensions are in meters unless noted otherwise.
  - Depth contours are taken from Bathymetric Survey conducted by EBA in November 2012.
  - All infrastructure is elevated on piles, except pickup/drop off float.
  - Walkways are 1.5 and 2.0 m wide.
  - Piles shown are conceptual only.

**FORESHORE SITE METES AND BOUNDS DESCRIPTION.**  
Begin at the southwest corner of Strata Lot 19, Plan KAS3478, District Municipality of Lake Country. Point of commencement [P of C].  
Then go 52.1 meters at 273°54'07"  
Then go 45.5 meters at 15°35'40"  
Then go 45.4 meters at 90°01'42"  
Then along shoreline returning to point of commencement.  
Containing 0.238 ha.

STATUS  
ISSUED FOR USE



<p>CLIENT</p> <p><b>Macdonald Lakeshore Properties LP</b></p>	<p><b>LAKESTONE DEVELOPMENT OKANAGAN LAKE, BC</b></p>			
	<p><b>BOAT LIFT AND FLOATING DOCK PLAN AND SECTION VIEW</b></p>			
<p>PROJECT NO. K13101597</p>	<p>DWN RH</p>	<p>CKD BL/TH</p>	<p>REV 1</p>	<p><b>Figure 2</b></p>
<p>OFFICE EBA-Kelowna</p>	<p>DATE April 9, 2014</p>			