

126°58'0"W

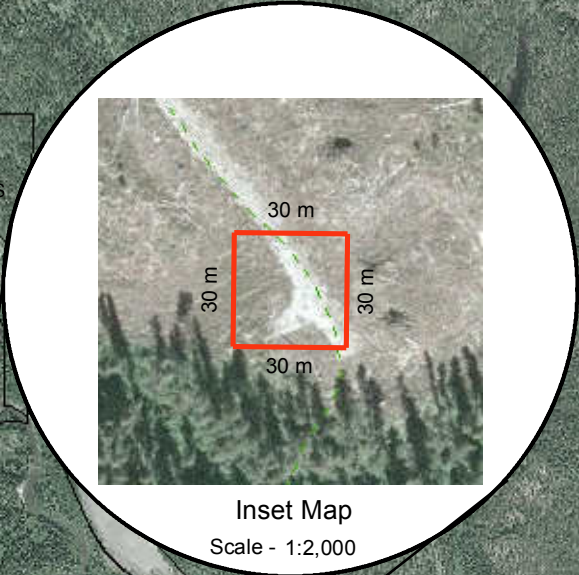
126°57'0"W

126°56'0"W

# SITE MAP

BCGS Mapsheet: 94D026

Lat/Long: 56° 14' 27.823" N 126° 56' 58.905" W



56°15'0"N

56°15'0"N

56°14'0"N

56°14'0"N

a t c h a

## File Number: 7403351

Site # 11 of 11 - TENURE

Area = 0.09 Ha.

TYPE: LICENCE

PURPOSE:  
COMMERCIAL RECREATION

SUBTYPE: LICENCE OF OCCUPATION

SUBPURPOSE:  
MULTIPLE USE

LOCATION: VARIOUS

ORTHO PHOTO YEAR: 2006

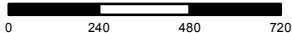
Produced by  
Ministry of Natural Resource Operations  
Northern Service Centre  
FrontCounterBC  
Date: September 15, 2014

Scale: 1:20,000 \*

\* if printed on 8.5X14 page

Projection: BC Albers  
Datum: NAD 83

Meters



### Legend

- |                                 |                                     |
|---------------------------------|-------------------------------------|
| Crown Land Application          | Protected Areas                     |
| Primary Survey Parcel           | Protected Area                      |
| Subdivision                     | OIC Ecological Reserve              |
| Municipality                    | Recreation Area                     |
| <b>Surveyed Rights of Way</b>   | <b>Base Mapping Features (20K)</b>  |
| Surveyed Road R/W               | River or Stream                     |
| Gas/Oil R/W District Lot        | River or Stream - Dry               |
| Power Transmission R/W          | Lake                                |
| Gas/Oil R/W                     | Reservoir - Definite                |
| Telecom R/W District Lot        | Glacier/Icefield                    |
| Miscellaneous R/W               | Contour - 20m interval              |
| <b>Transportation Corridors</b> | <b>Transportation - Lines (20K)</b> |
| Highway                         | Airfield                            |
| Railway                         | Road                                |
| Surveyed Road R/W               | Forest Service Road                 |
|                                 | Road Permit                         |
|                                 | Trail                               |
|                                 | Rail Line                           |

All measurements are approximate.