

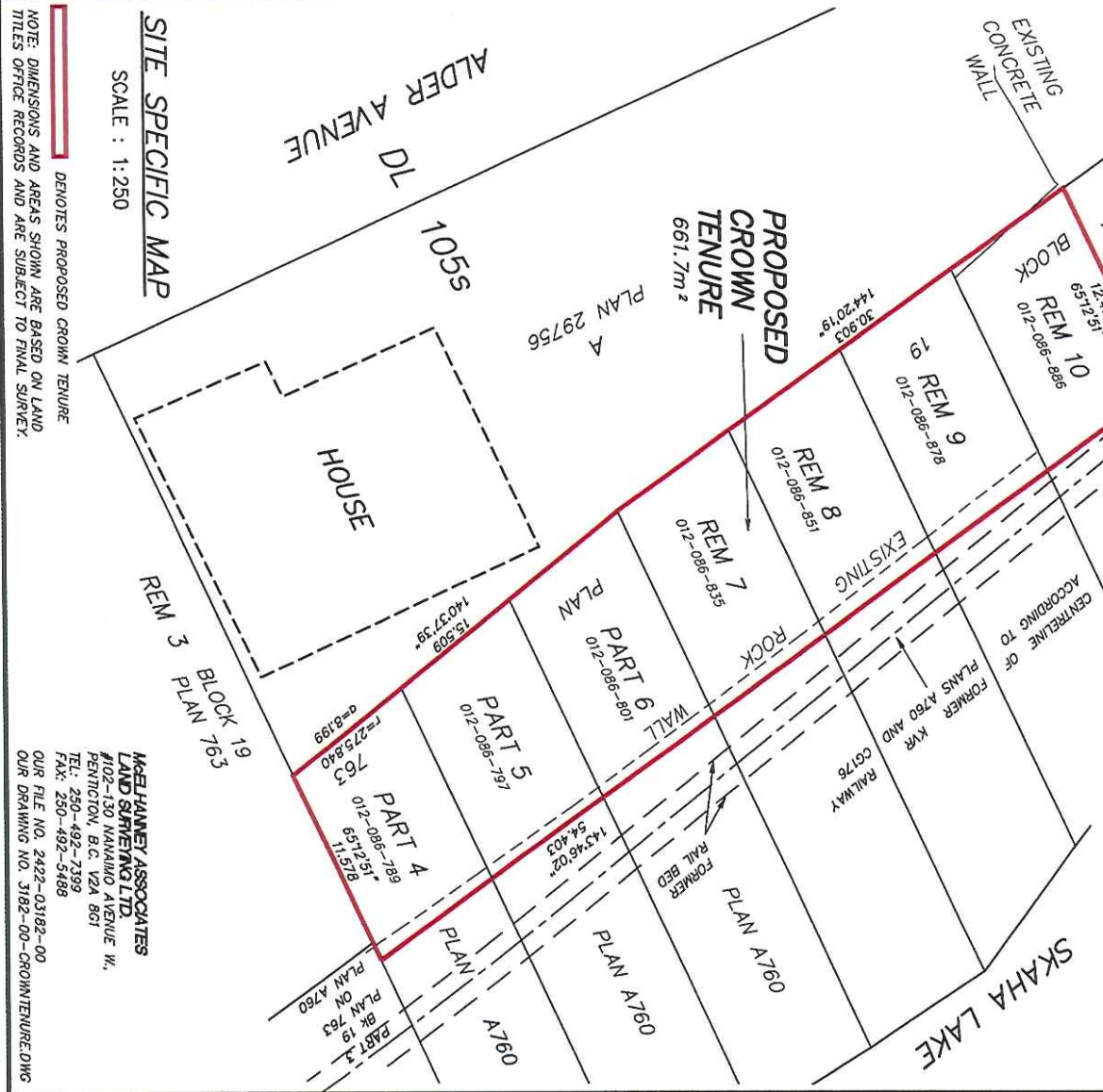
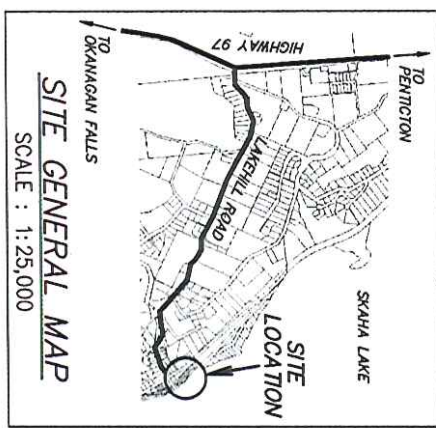


**SKETCH SHOWING PROPOSED CROWN TENURE OVER PART OF:**

- 1) LOT 10 BK 19 DL 1055 SDYD PLAN 763 EXCEPT PLAN 29756,
- 2) LOT 9 BK 19 DL 1055 SDYD PLAN 763 EXCEPT PLAN 29756,
- 3) LOT 8 BK 19 DL 1055 SDYD PLAN 763 EXCEPT PLAN 29756,
- 4) LOT 7 BK 19 DL 1055 SDYD PLAN 763 EXCEPT PLAN 29756,
- 5) THAT PART LOT 6 BK 19 ON PLAN A780 DL 1055 SDYD PLAN 763,
- 6) THAT PART LOT 5 BK 19 ON PLAN A780 DL 1055 SDYD PLAN 763,
- 7) THAT PART LOT 4 BK 19 ON PLAN A760 DL 1055 SDYD PLAN 763

BCGS 82E.033  
THIS PLAN LIES WITHIN THE REGIONAL DISTRICT OF OKANAGAN SIMILIKAMEEN.

BOOK	OF	REFERENCE	AREA REQUIRED
LOT 10 BK 19 DL 1055 SDYD PLAN 763 EXCEPT PLAN 29756			95.3 m <sup>2</sup>
LOT 9 BK 19 DL 1055 SDYD PLAN 763 EXCEPT PLAN 29756			95.9 m <sup>2</sup>
LOT 8 BK 19 DL 1055 SDYD PLAN 763 EXCEPT PLAN 29756			96.5 m <sup>2</sup>
LOT 7 BK 19 DL 1055 SDYD PLAN 763 EXCEPT PLAN 29756			97.0 m <sup>2</sup>
THAT PART LOT 6 BK 19 ON PLAN A780 DL 1055 SDYD PLAN 763			95.6 m <sup>2</sup>
THAT PART LOT 5 BK 19 ON PLAN A780 DL 1055 SDYD PLAN 763			92.3 m <sup>2</sup>
THAT PART LOT 4 BK 19 ON PLAN A760 DL 1055 SDYD PLAN 763			89.1 m <sup>2</sup>
<b>TOTAL</b>			<b>661.7 m<sup>2</sup></b>



**SITE SPECIFIC MAP**

SCALE : 1:250

NOTE: DIMENSIONS AND AREAS SHOWN ARE BASED ON LAND TITLES OFFICE RECORDS AND ARE SUBJECT TO FINAL SURVEY.

MGELHANNET ASSOCIATES  
LAND SURVEYING LTD.  
#102-130 NANAIMO AVENUE W,  
PENTICTON, B.C. V2A 8G1  
TEL: 250-492-7399  
FAX: 250-492-5488  
OUR FILE NO. 2422-03182-00  
OUR DRAWING NO. 3182-00-CROWN/TENURE.DWG