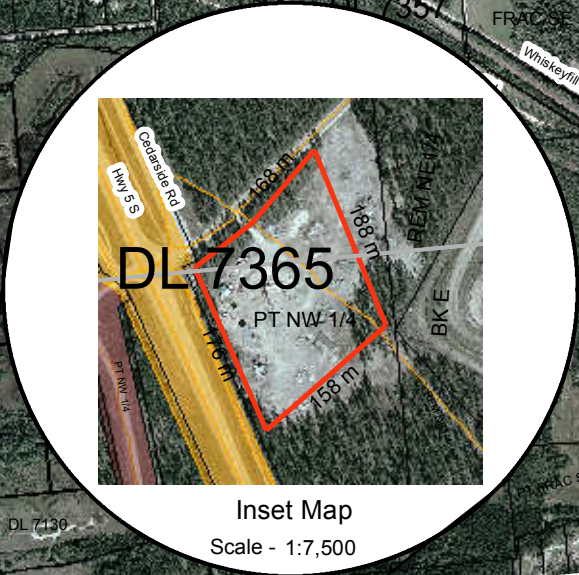


119°17'0"W 119°16'0"W 119°15'0"W 119°14'0"W

SITE MAP

BCGS Mapsheet: 83D074

Lat/Long: 52° 47' 58.975" N 119° 15' 35.079" W



Inset Map
Scale - 1:7,500



File Number: 7406283

Site # 1 of 1 - APPLICATION Area = 2.713 Ha.

TYPE: CROWN GRANT PURPOSE: INDUSTRIAL
 SUBTYPE: DIRECT SALE SUBPURPOSE: LIGHT INDUSTRIAL
 LOCATION: LITTLE CRANBERRY LAKE ORTHOPHOTO YEAR: 2005

Produced by
 Ministry of Natural Resource Operations
 Northern Service Centre
 FrontCounterBC
 Date: January 29, 2015

Scale: 1:20,000 *
 * if printed on 8.5X14 page

Projection: BC Albers
 Datum: NAD 83
 Meters
 0 240 480 720



Legend

- Crown Land Application
- Primary Survey Parcel
- Subdivision
- Municipality
- Surveyed Rights of Way**
 - Surveyed Road R/W
 - Gas/Oil R/W District Lot
 - Power Transmission R/W
 - Gas/Oil R/W
 - Telecom R/W District Lot
 - Miscellaneous R/W
- Transportation Corridors**
 - Highway
 - Railway
 - Surveyed Road R/W
- Protected Areas**
 - Provincial Park
 - Protected Area
 - OIC Ecological Reserve
 - Recreation Area
- Base Mapping Features (20K)**
 - River or Stream
 - River or Stream - Dry
 - Lake
 - Reservoir - Definite
 - Glacier/Icefield
 - Contour - 20m interval
- Transportation - Lines (20K)**
 - Airfield
 - Road
 - Forest Service Road
 - Road Permit
 - Trail
 - Rail Line

All measurements are approximate.