

119°54'0"W

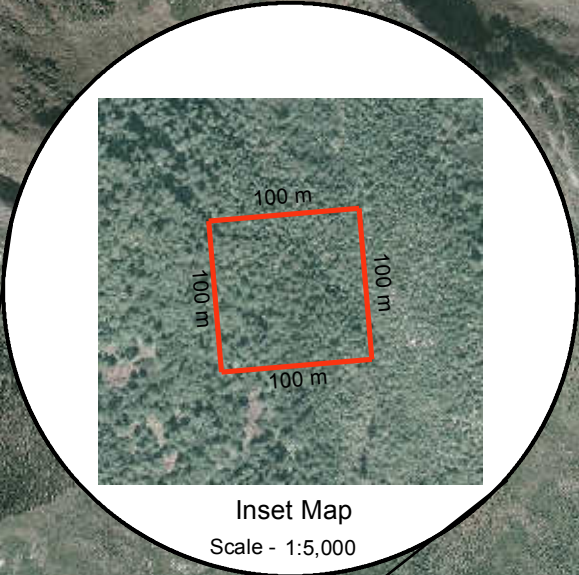
119°53'0"W

119°52'0"W

# SITE MAP

BCGS Mapsheet: 83E031

Lat/Long: 53° 22' 8.923" N 119° 53' 20.394" W



83E031

53°23'0"N

53°23'0"N

53°22'0"N

53°22'0"N

53°21'0"N

53°21'0"N

## File Number: 7406030

### Site # 3 of 3 - TENURE Satellite Camp

Area = 1 Ha.

TYPE: LICENCE

PURPOSE:  
COMMERCIAL RECREATION

SUBTYPE: LICENCE OF OCCUPATION

SUBPURPOSE:  
HUNT CAMPS

LOCATION: HOLMES RIVER

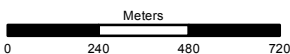
ORTHO PHOTO YEAR: 2006

Produced by  
Ministry of Natural Resource Operations  
Northern Service Centre  
FrontCounterBC  
Date: January 16, 2015

Scale: 1:20,000 \*

\* if printed on 8.5X14 page

Projection: BC Albers  
Datum: NAD 83



## Legend

- |                                 |                                     |
|---------------------------------|-------------------------------------|
| Crown Land Application          | Protected Areas                     |
| Primary Survey Parcel           | Provincial Park                     |
| Subdivision                     | Protected Area                      |
| Municipality                    | OIC Ecological Reserve              |
| <b>Surveyed Rights of Way</b>   | Recreation Area                     |
| Surveyed Road R/W               | <b>Base Mapping Features (20K)</b>  |
| Gas/Oil R/W District Lot        | River or Stream                     |
| Power Transmission R/W          | River or Stream - Dry               |
| Gas/Oil R/W                     | Lake                                |
| Telecom R/W District Lot        | Reservoir - Definite                |
| Miscellaneous R/W               | Glacier/Icefield                    |
| <b>Transportation Corridors</b> | Contour - 20m interval              |
| Highway                         | <b>Transportation - Lines (20K)</b> |
| Railway                         | Airfield                            |
| Surveyed Road R/W               | Road                                |
|                                 | Forest Service Road                 |
|                                 | Road Permit                         |
|                                 | Trail                               |
|                                 | Rail Line                           |

All measurements are approximate.

