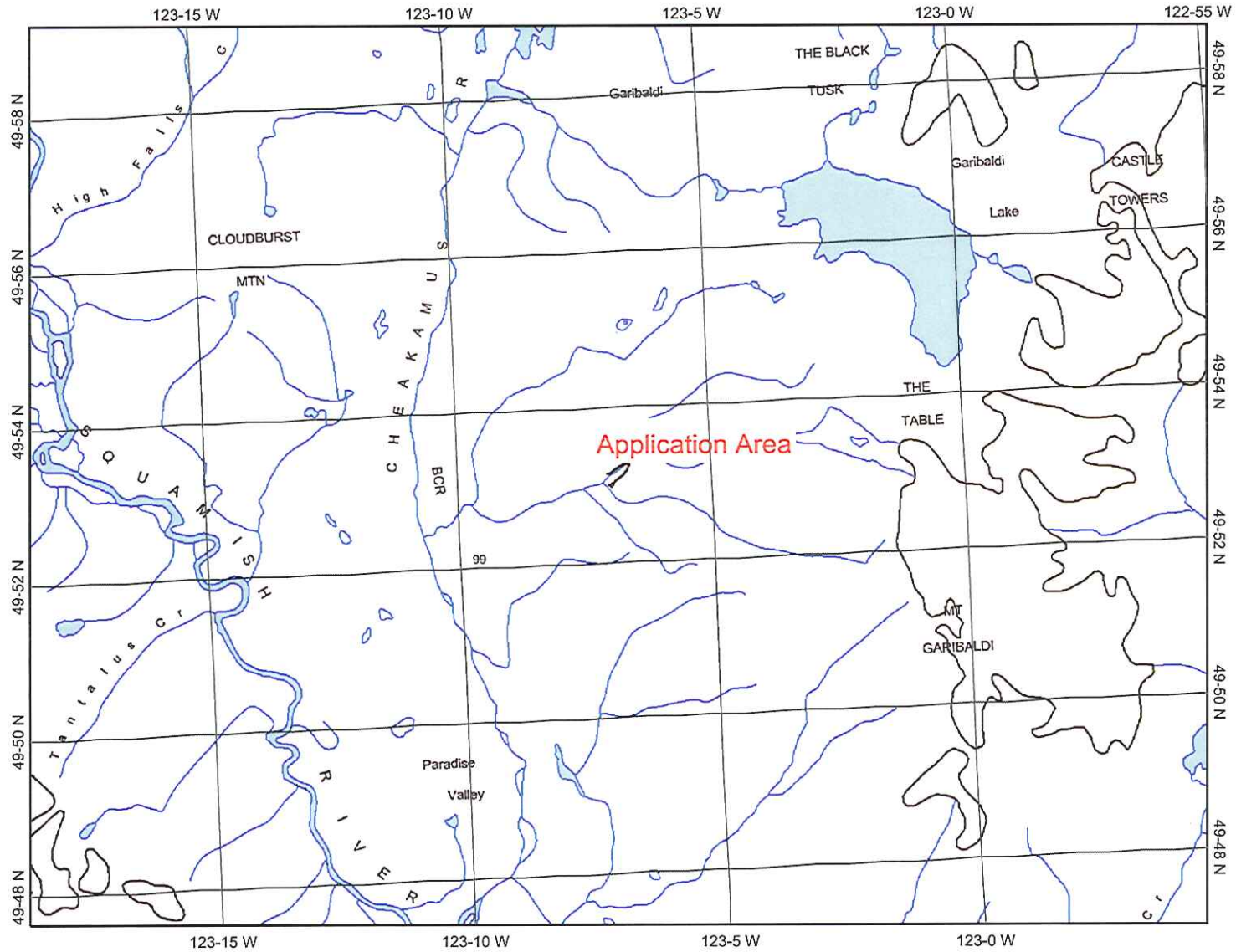


# GENERAL LOCATION



### Legend

**Annotation (1:250K)**

- Rapids
- Falls
- Dam
- Sinkhole

**Water - Lines (1:250K)**

- Conduit - Aboveground
- Conduit - Electrical - Underground
- Canal - Irrigation
- Falls
- Penstock
- Rapids
- River/Stream - Definite
- River/Stream - Braided
- River/Stream - Disappearing
- River/Stream - Dry
- River/Stream - Indefinite
- River/Stream - Left Bank
- River/Stream - Right Bank
- Penstock - Underground
- Dam
- Flooded Land - Inundated
- Lake - Definite
- Lake - Indefinite
- Lake - Intermittent
- Lake - Marshy
- Reservoir - Definite
- Flooded Land - Inundated.Indefinite
- Lake - Marshy.Indefinite
- Marsh
- Icefield
- Icemass - Debris Covered Ice
- Beach
- Breakwall/Breakwater - Large
- Dyke/Levee
- Island - Definite

Scale: 1:150,000

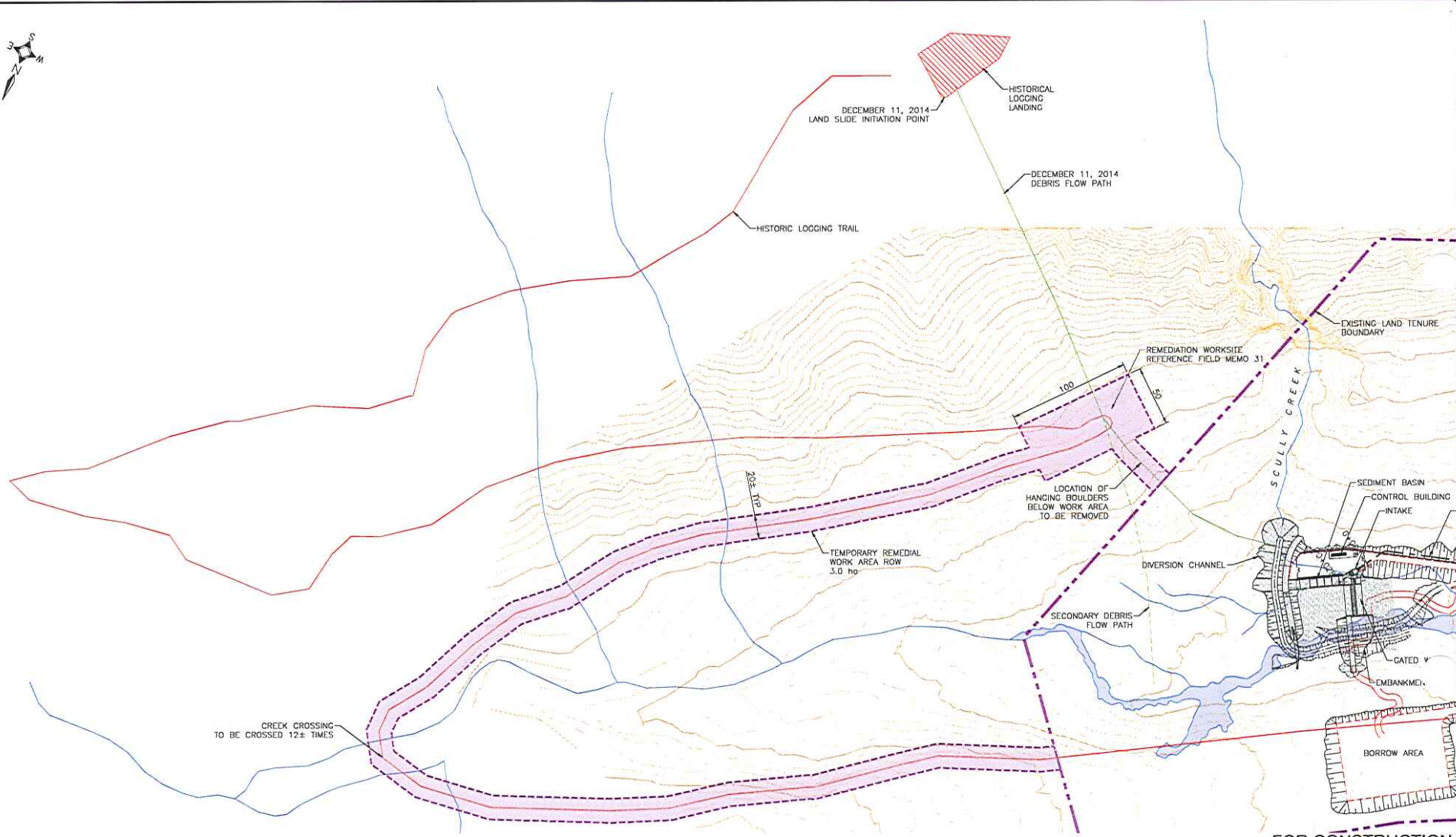


Map center: 49°53' N, 123°6' W

This map is a user generated static output from an Internet mapping site and is for general reference only. Data layers that appear on this map may or may not be accurate, current, or otherwise reliable. THIS MAP IS NOT TO BE USED FOR NAVIGATION.



THE DRAWING SHALL NOT BE REPRODUCED IN ANY MANNER, OR FOR ANY PURPOSE, EXCEPT BY WRITTEN PERMISSION OF CANADIAN PROJECTS LIMITED AND IS PROVIDED BY COPYRIGHT LAW. © 2014 CANADIAN PROJECTS LIMITED. ALL RIGHTS RESERVED. NO PART OF THIS DRAWING SHALL BE REPRODUCED, STORED IN A RETRIEVABLE SYSTEM, OR TRANSMITTED IN ANY FORM OR BY ANY MEANS, ELECTRONIC OR MECHANICAL, INCLUDING PHOTOCOPYING, RECORDING, OR BY ANY INFORMATION STORAGE AND RETRIEVAL SYSTEM, WITHOUT PERMISSION IN WRITING FROM CANADIAN PROJECTS LIMITED.



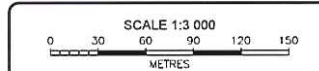
FOR CONSTRUCTION

**NOTES**

1. ALL DIMENSIONS AND ELEVATIONS ARE IN METRES, UNLESS NOTED OTHERWISE.
2. ALL COORDINATES ARE IN UTM NAD83, ZONE 10 AND ELEVATIONS ARE CGVD28.
3. 5m INTERVAL CONTOURS GENERATED BY CPL FROM LIDAR SUREY DATED SEPTEMBER 2011 PROVIDED BY TERRA REMOTE SENSING INC.
4. GENERAL AREA LICENSE OF OCCUPATION IN ACCORDANCE WITH THE MULTI TENURE AGREEMENT NO. 242353 DATED MAY 3, 2013. LAND TENURE BOUNDARY LINEWORK PROVIDED ELECTRONICALLY BY BLUEARTH RENEWABLES ON JAN 9, 2014. TOTAL AREA = .36724 ha.

**LEGEND**

- EXISTING ROAD
- - - PROPOSED ROAD
- - - LAND TENURE BOUNDARY
- TEMPORARY REMEDIAL WORK AREA ROW (~20m WIDE)



REV	NO	DATE	REVISION DESCRIPTION	DES	CHK	DRN	CHK
A	15	01/19	FIGH REVIEW	ADF	ADF	ADF	CPJ



**CULLITON CREEK POWER LP**

CULLITON HYDRO PROJECT  
GENERAL - PROJECT  
LANDSLIDE REMEDIATION  
PLAN

PROJECT NUMBER	1051-015
CAD NUMBER	4.3.167
DRAWING NUMBER	371

10