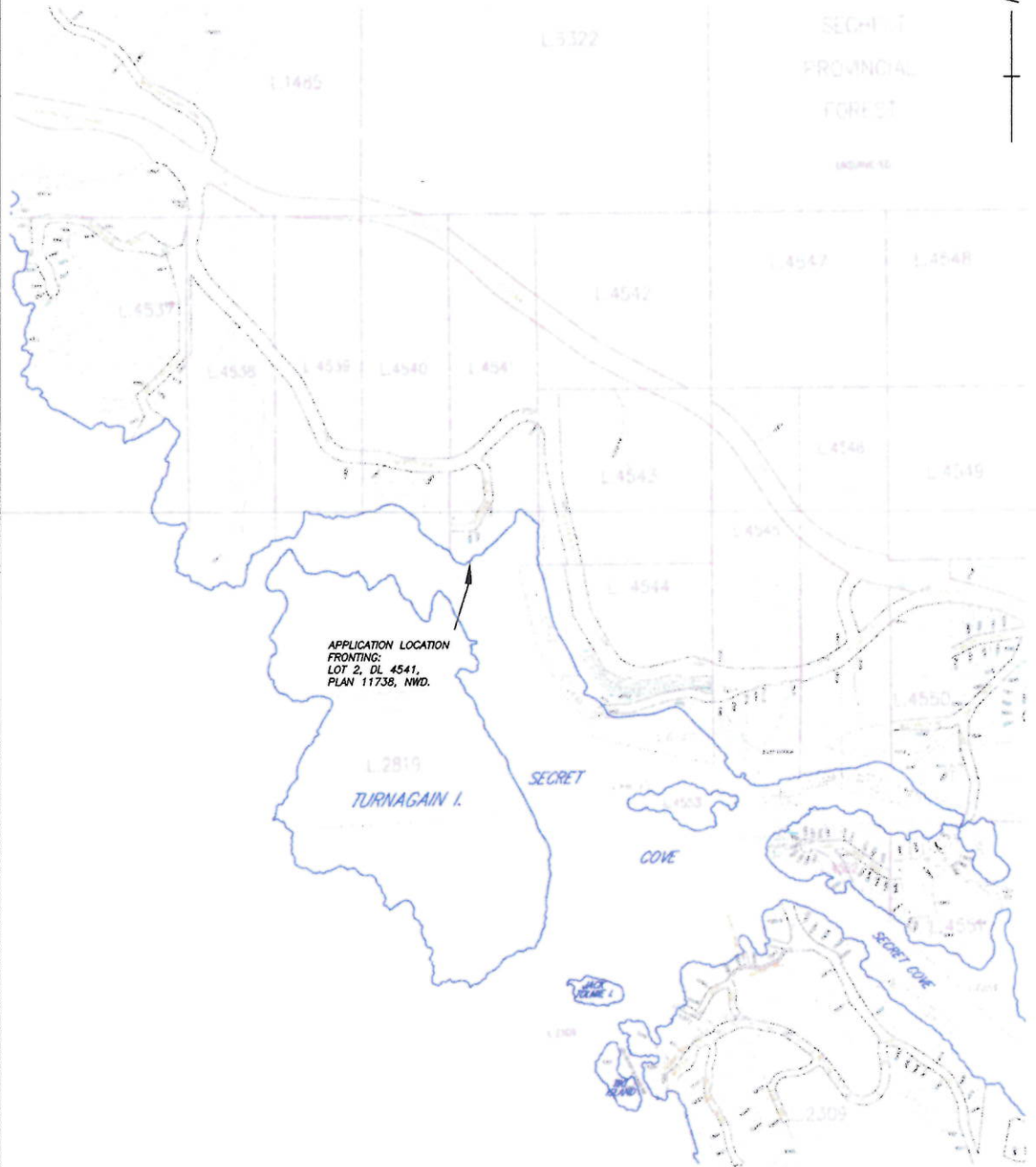
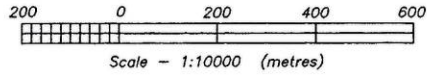


**GENERAL LOCATION PLAN TO ACCOMPANY AN APPLICATION  
FOR A LICENSE OF OCCUPATION FOR A PRIVATE MOORAGE  
FRONTING LOT 2, D.L. 4541, PLAN 11738, GROUP 1,  
NEW WESTMINSTER DISTRICT.**

**SMALL SCALE GENERAL  
SITE PLAN "A"**

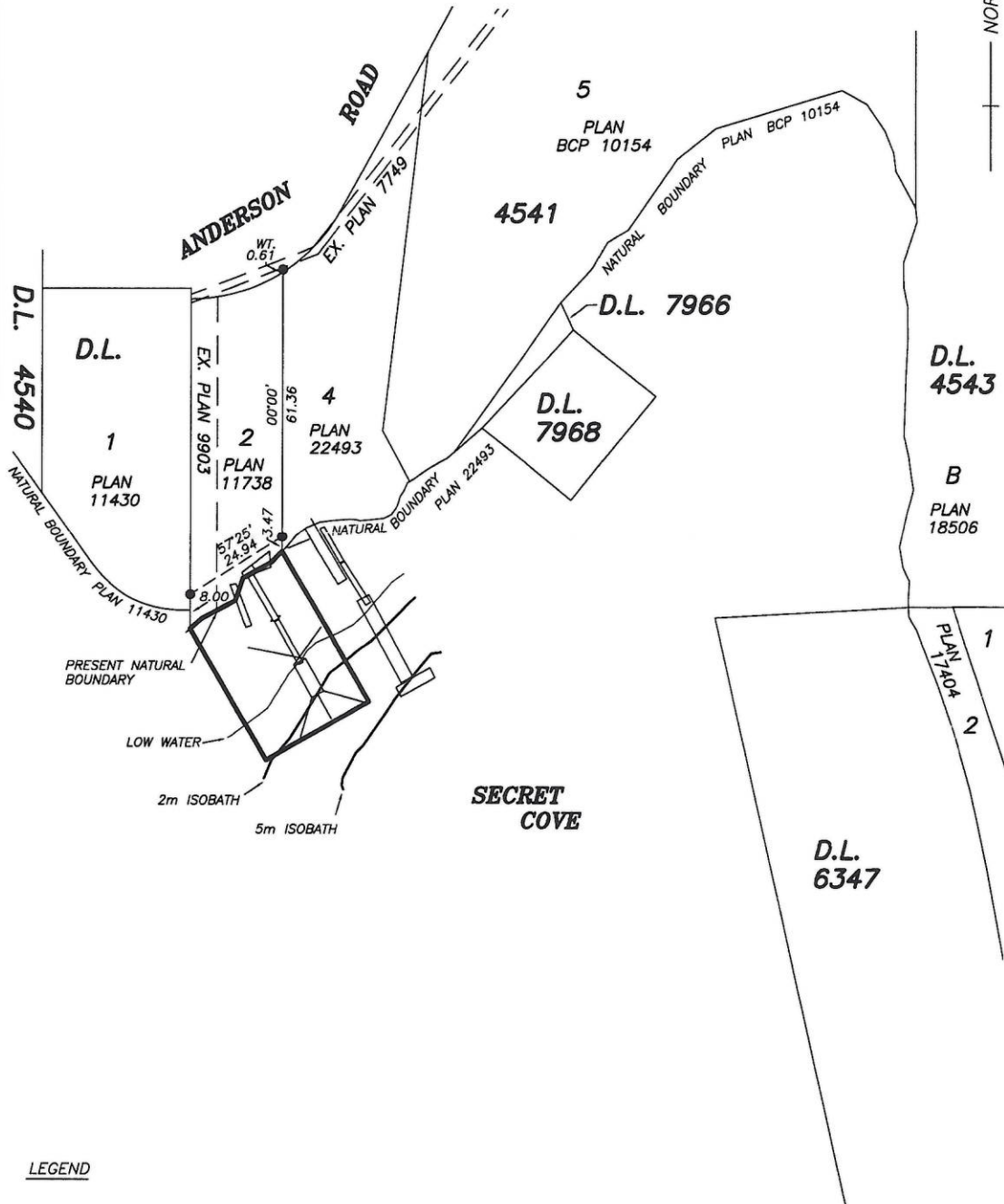
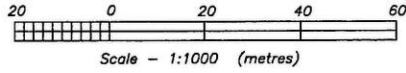


DATE: MAY 14, 2014

STRAIT LAND SURVEYING INC.  
SEAMUS POPE, BCLS  
BOX 61 (5689 DOLPHIN ST)  
SECHLT, BC VON 3A0  
T: 604-885-3237

SITE PLAN TO ACCOMPANY AN APPLICATION FOR A LICENSE OF OCCUPATION FOR A PRIVATE MOORAGE FRONTING LOT 2, D.L. 4541, PLAN 11738, GROUP 1, NEW WESTMINSTER DISTRICT.

MEDIUM SCALE  
SITE PLAN "B"



LEGEND

- DENOTES A STANDARD IRON POST FOUND.
- WT. INDICATES WITNESS IRON POST.
- ELEVATIONS SHOWN ARE IN METRES AND REDUCED TO CHART DATUM.
- ALL DISTANCES ARE IN METRES UNLESS OTHERWISE INDICATED.

REVISED: JULY 15, 2014  
DATE: MAY 14, 2014

STRAIT LAND SURVEYING INC.  
SEAMUS POPE, BCLS  
BOX 61 (5689 DOLPHIN ST)  
SECHelt, BC VON 3A0  
T: 604-885-3237