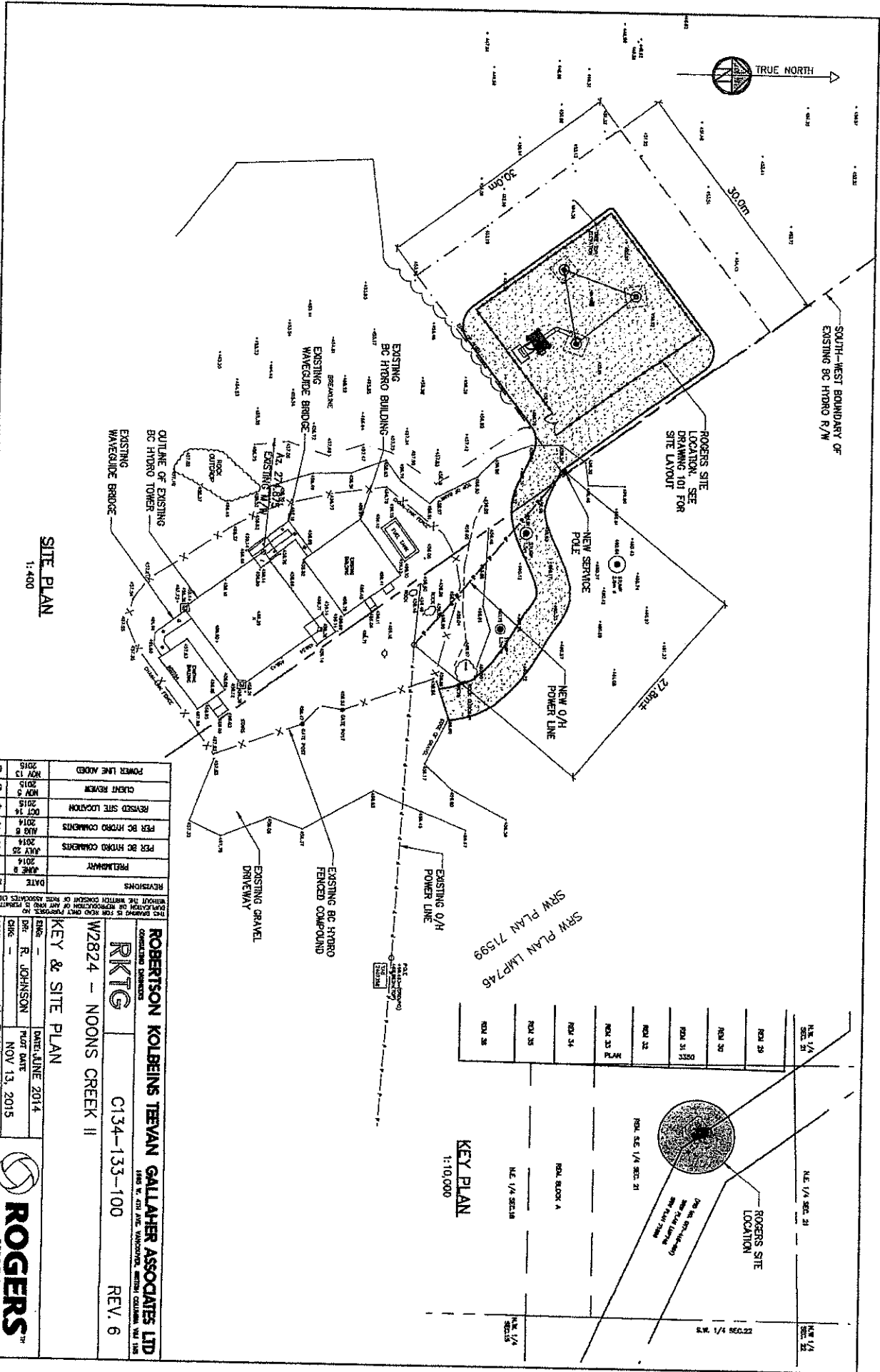


General Location Map - 2411713, 2411714, 2411715

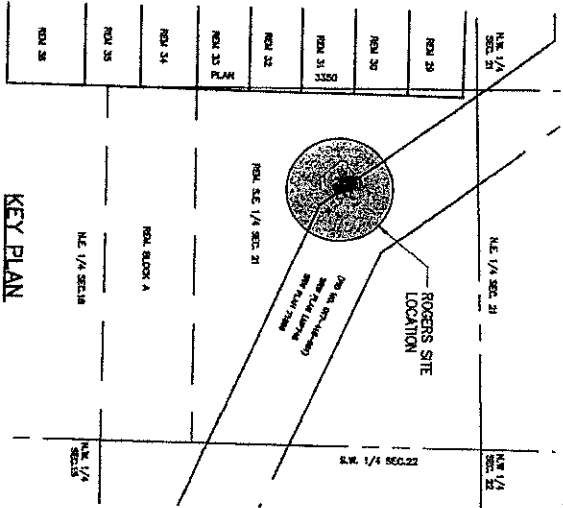
1:50,000



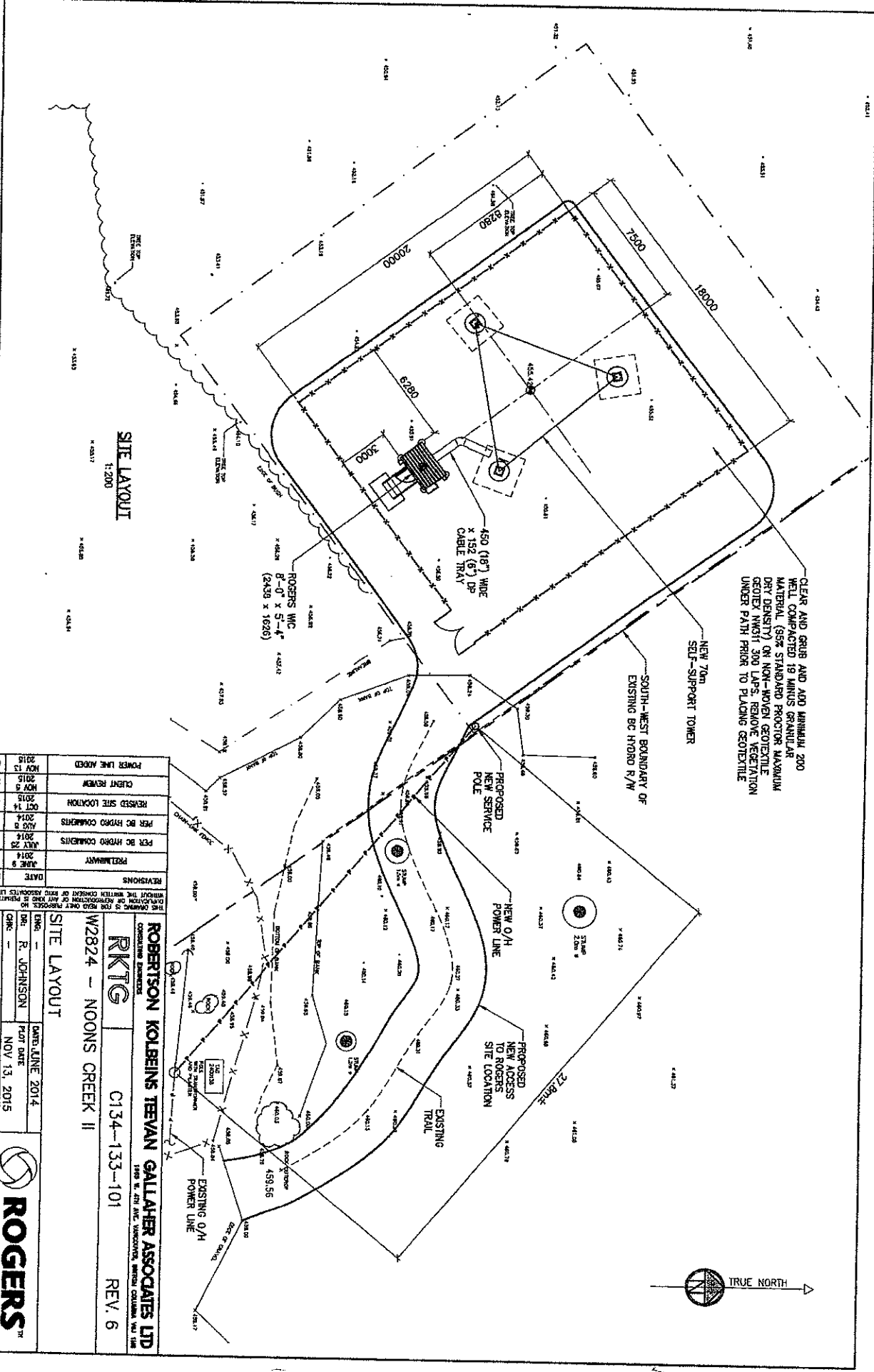
SITE PLAN
1:400

NO.	DATE	REVISIONS
1	JUNE 9 2014	PRELIMINARY
2	JULY 22 2014	PER BC HYDRO COMMENTS
3	AUG 6 2014	PER BC HYDRO COMMENTS
4	SEP 24 2014	REVISED SITE LOCATION
5	NOV 5 2015	CLIENT REVIEW
6	NOV 13 2015	POWER LINE ADDED

ROBERTSON KOLBEINS TEEVAN GALLAHER ASSOCIATES LTD
 CONSULTING ENGINEERS
PKTG
 W2824 - NOONS CREEK II
 C134-133-100
 REV. 6
KEY & SITE PLAN
 DATE: JUNE 2014
 ENGR: R. JOHNSON
 PLT: M. RAMSAY
 DATE: NOV 13, 2015
 CHK: M. RAMSAY
 APP: M. RAMSAY



KEY PLAN
1:10,000



CLEAR AND GRUB AND ADD MINIMUM 200
WELL COMPACTED 18 MINS GRANULAR
MATERIAL (95% STANDARD PROCTOR MAXIMUM
DRY DENSITY) ON NON-ROVEN GEOTEXTILE
GRADE (MAY BE 300 LAPS. REMOVE VEGETATION
UNDER PATH PRIOR TO PLACING GEOTEXTILE

SITE LAYOUT
1:200

NO.	DATE	REVISIONS
1	JUNE 9 2014	PRELIMINARY
2	JULY 23 2014	PER BC HYDRO COMMENTS
3	AUG 3 2014	PER BC HYDRO COMMENTS
4	OCT 14 2015	REVISED SITE LOCATION
5	NOV 9 2015	CLIENT REVIEW
6	NOV 13 2015	POWER LINE ADDED

THIS DRAWING IS FOR THE USE OF THE CLIENT AND IS NOT TO BE REPRODUCED OR TRANSMITTED IN ANY FORM OR BY ANY MEANS, ELECTRONIC OR MECHANICAL, WITHOUT THE WRITTEN CONSENT OF THE PROJECT MANAGER. THE PROJECT MANAGER ACCEPTS NO LIABILITY FOR ANY DAMAGE OR LOSS OF PROFITS, BUSINESS, REVENUE OR OTHER ECONOMIC LOSS, INCLUDING REASONABLE ATTORNEY'S FEES, ARISING FROM THE USE OF THIS DRAWING.

ROBERTSON KOLBEINS TEVAN GALLAHER ASSOCIATES LTD
CONSULTING ENGINEERS
1180 W. 27th AVE. VANCOUVER, BRITISH COLUMBIA, V6L 1M6

RTG C134-133-101 REV. 6

W2824 - NOONS CREEK II

SITE LAYOUT

DATE: JUNE 2014	DATE: NOV 13, 2015
DWG: R. JOHNSON	CHK: M. RAMSAY
APP: M. RAMSAY	APP: M. RAMSAY

ROGERS WIRELESS