

LOCATION MAP

File - 7408674 Area = 3306.60 Ha
 Quad/Snowmobile Tours - T & B Tours

Legend

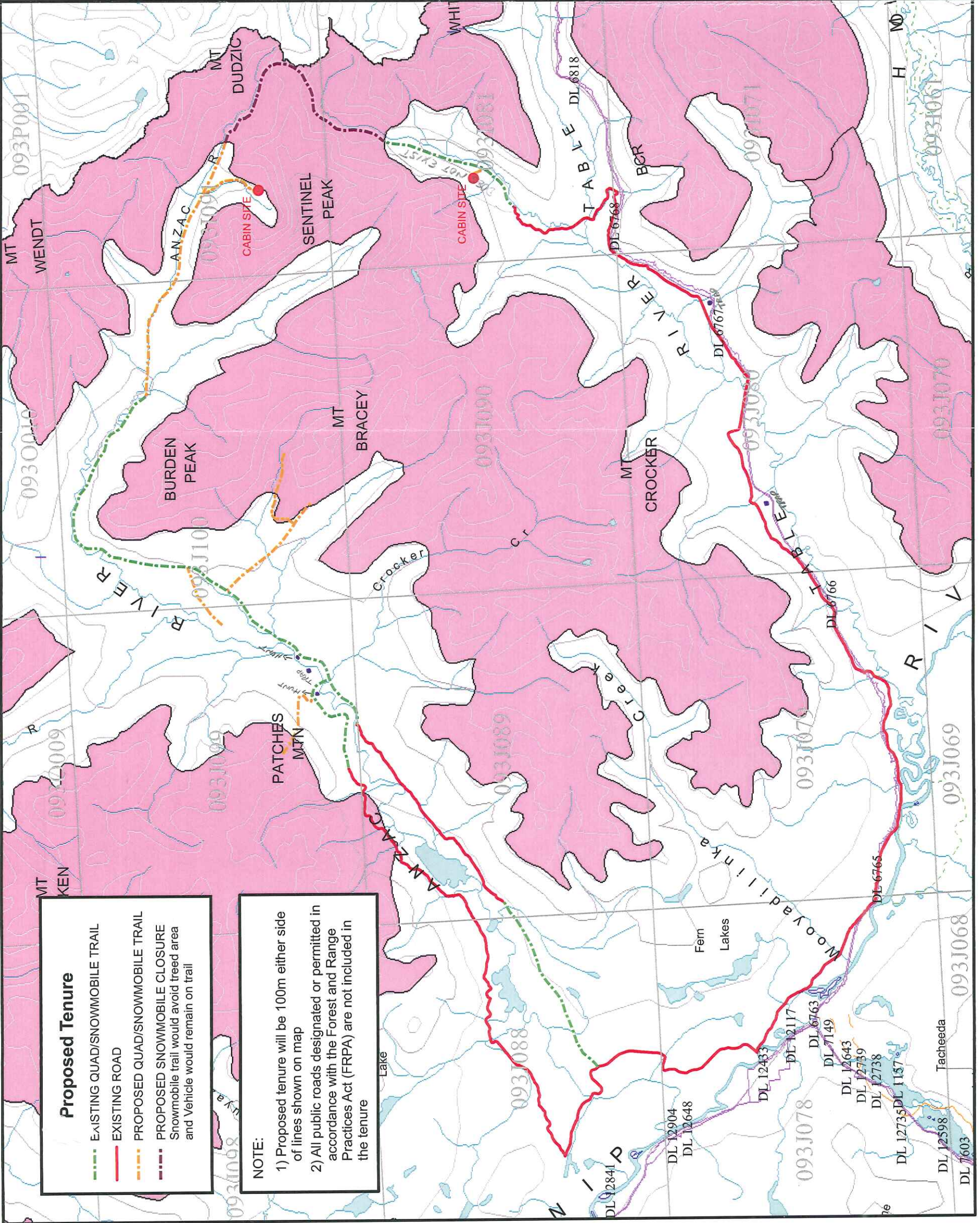
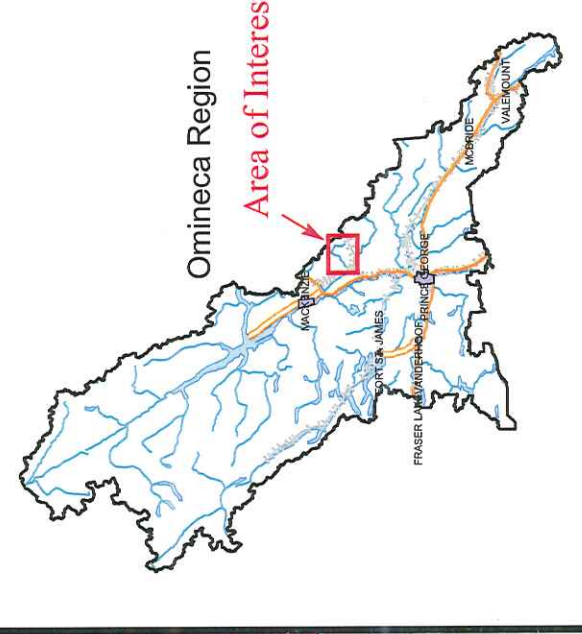
- Intensive Use Site
- Primary Survey Parcel
- Road
- Trail
- Rail Line
- River or Stream
- Lake - Definite
- Lake - Indefinite
- Marsh
- Icefield
- Island - Definite
- Contour Lines (200 m)
- Provincial Parks
- Proposed Snowmobile Closure

Produced by
 FrontCounter BC
 Integrated Land Management Bureau
 Northern Service Centre GIS Section
 January 28, 2008

Scale - 1:150,000
 * if printed on 17X11 page

0 1,500 3,000
 Meters

Albers Projection/NAD 83



Proposed Tenure

- EXISTING QUAD/SNOWMOBILE TRAIL
- EXISTING ROAD
- PROPOSED QUAD/SNOWMOBILE TRAIL
- PROPOSED SNOWMOBILE CLOSURE
 Snowmobile trail would avoid treed area and Vehicle would remain on trail

NOTE:

- 1) Proposed tenure will be 100m either side of lines shown on map
- 2) All public roads designated or permitted in accordance with the Forest and Range Practices Act (FRPA) are not included in the tenure