

123°38'0"W

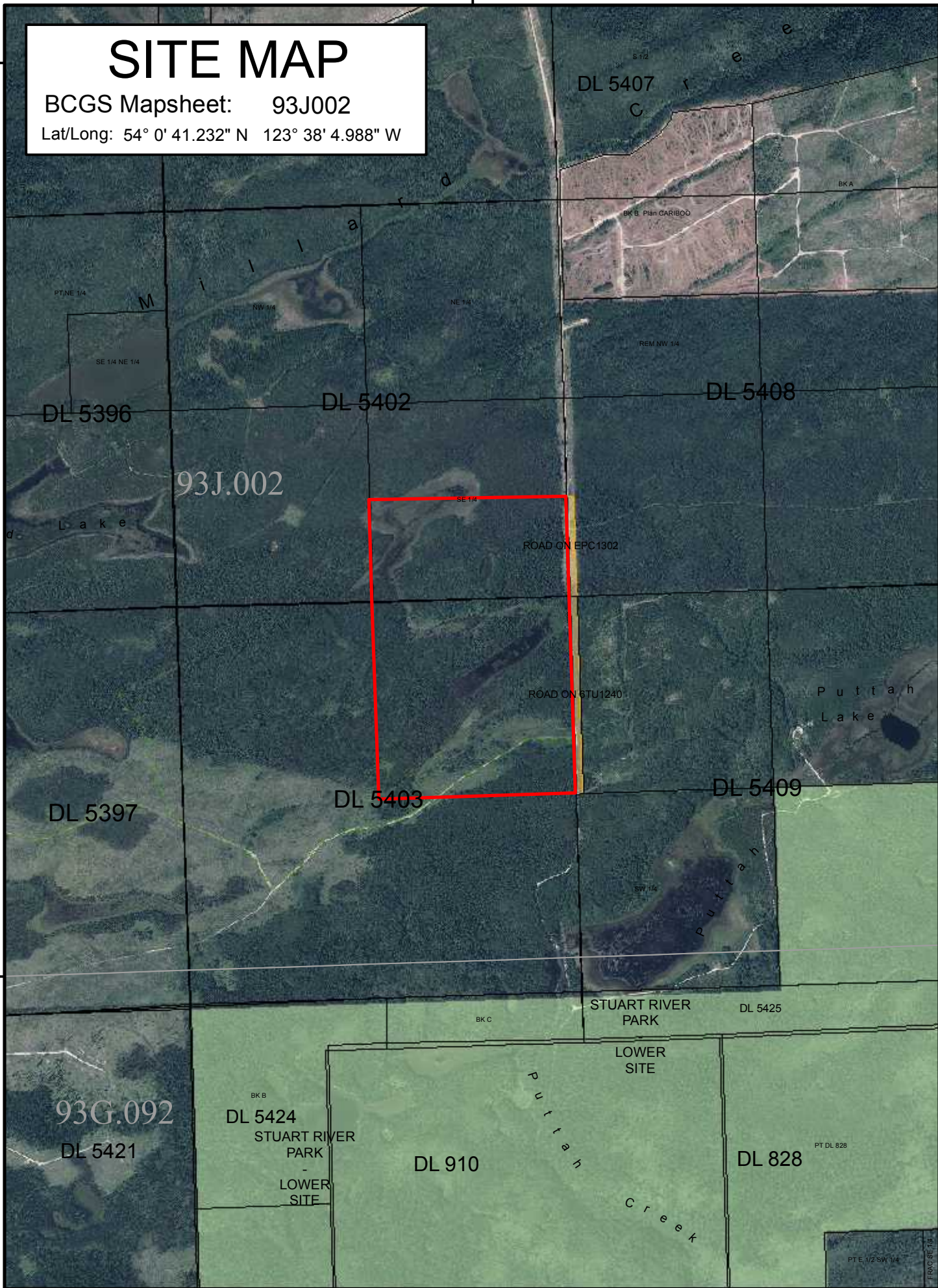
54°20'0"N

54°20'0"N

SITE MAP

BCGS Mapsheet: 93J002

Lat/Long: 54° 0' 41.232" N 123° 38' 4.988" W



54°0'0"N

54°0'0"N

File Number: 7409843

Site # 1 of 1 - APPLICATION

Area = 97.63 Ha.

TYPE: CROWN GRANT

PURPOSE: AGRICULTURE

SUBTYPE: DIRECT SALE

SUBPURPOSE: EXTENSIVE

LOCATION: Sturgeon Point

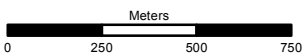
ORTHO PHOTO YEAR: 2012

Produced by
Ministry of Natural Resource Operations
Northern Service Centre
FrontCounterBC
Date: April 5, 2016

Scale: 1:20,000 *

* if printed on 8.5X14 page

Projection: BC Albers
Datum: NAD 83



Legend

- Crown Land Application
- Primary Survey Parcel
- Subdivision
- Municipality
- Surveyed Rights of Way**
 - Surveyed Road R/W
 - Gas/Oil R/W District Lot
 - Power Transmission R/W
 - Gas/Oil R/W
 - Telecom R/W District Lot
 - Miscellaneous R/W
- Transportation Corridors**
 - Highway
 - Railway
 - Surveyed Road R/W
- Protected Areas**
 - Provincial Park
 - Protected Area
 - OIC Ecological Reserve
 - Recreation Area
- Base Mapping Features (20K)**
 - River or Stream
 - River or Stream - Dry
 - Lake
 - Reservoir - Definite
 - Glacier/Icefield
 - Contour - 20m interval
- Transportation - Lines (20K)**
 - Airfield
 - Road
 - Forest Service Road
 - Road Permit
 - Trail
 - Rail Line

All measurements are approximate.