

122°24'0"W 122°0'0"W 121°36'0"W

LOCATION MAP

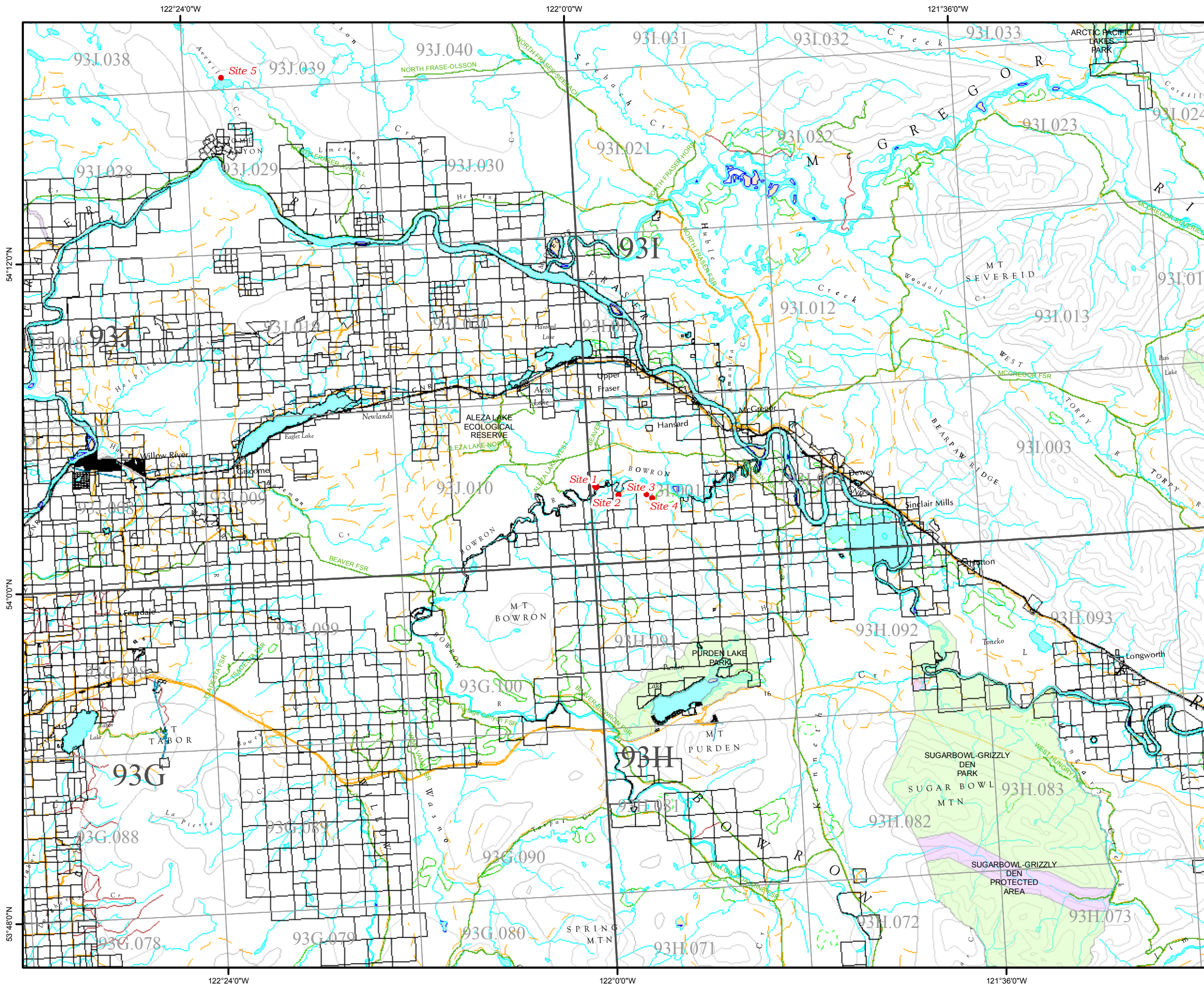
File - 7407841 Area = 1.35 Ha
Client - SCOTT PICHETTE

Legend

- Crown Land Application
 - Municipal Boundary
 - Primary Survey Parcel
 - Subdivision
 - Surveyed Rights of Way
-
- Provincial Park
 - Protected Area
 - OIC Ecological Reserve
-
- Highway
 - Railway
 - Surveyed Road R/W
 - Road
 - Forest Service Road
 - Trail
 - Rail Line
-
- Rapids
 - River or Stream - Definite
 - River or Stream - Dry
 - River or Stream - Indefinite
 - Dam - section Base
 - Flooded Land - Inundated
 - Lake - Definite
 - Lake - Indefinite
 - Lake - Intermittent
 - Reservoir - Definite
 - Glacier
 - Icefield
 - Island - Definite
 - Sand Bar
-
- Contour - interval 200m

Produced by
Ministry of Forests, Lands and
Natural Resource Operations
Prince George
FrontCounterBC
Date: April 22, 2016

Scale - 1:250,000 *
* if printed on 17X11 page
0 2 4 6
Kilometers
BC Albers Projection/NAD 83



122°24'0"W 122°0'0"W 121°36'0"W