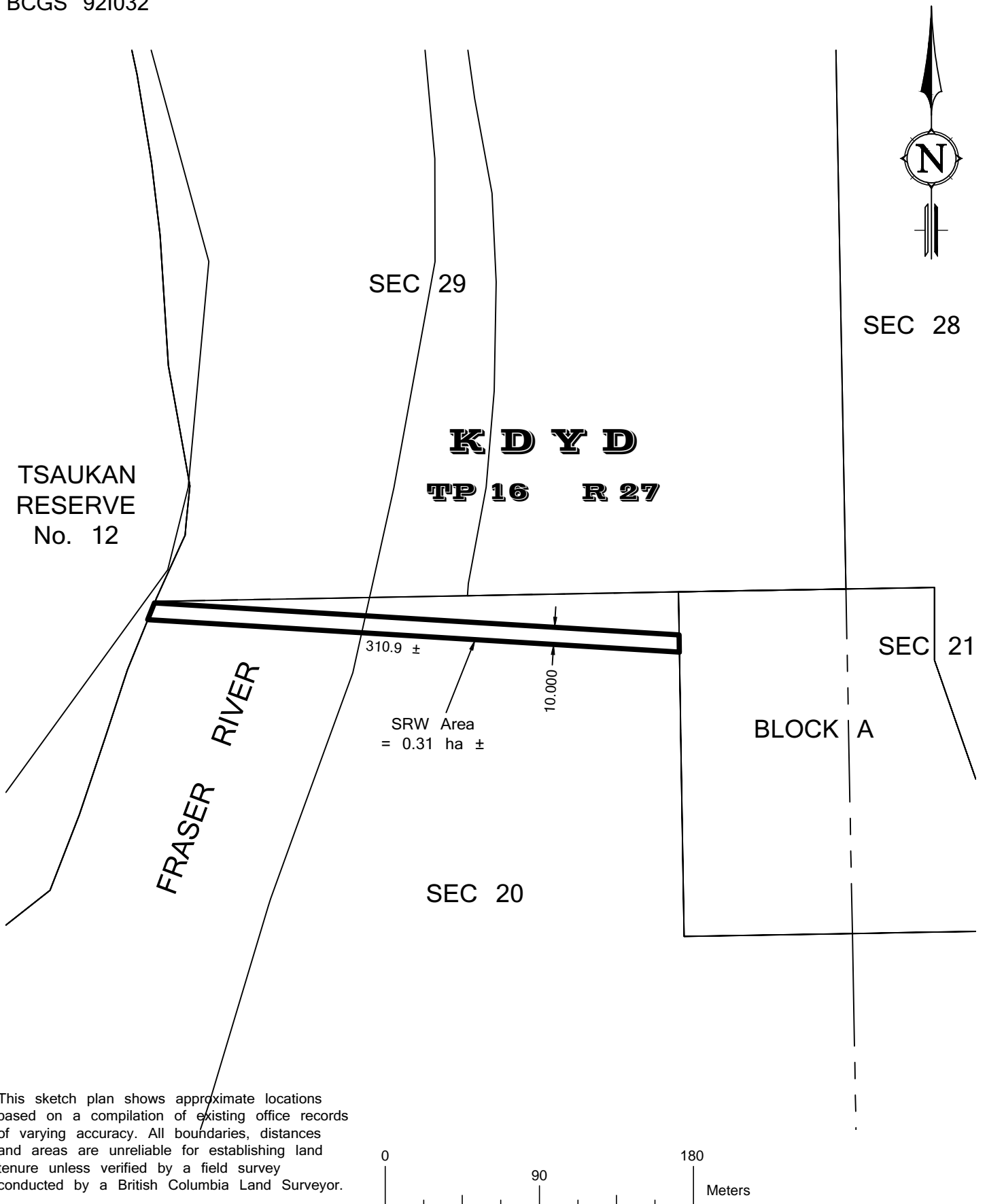


SKETCH PLAN OF PROPOSED RIGHT OF WAY OVER SECTION 20, TOWNSHIP 16, RANGE 27 AND THE BED AND FORESHORE OF FRASER RIVER, KDYD.

BCGS 921032



This sketch plan shows approximate locations based on a compilation of existing office records of varying accuracy. All boundaries, distances and areas are unreliable for establishing land tenure unless verified by a field survey conducted by a British Columbia Land Surveyor.

