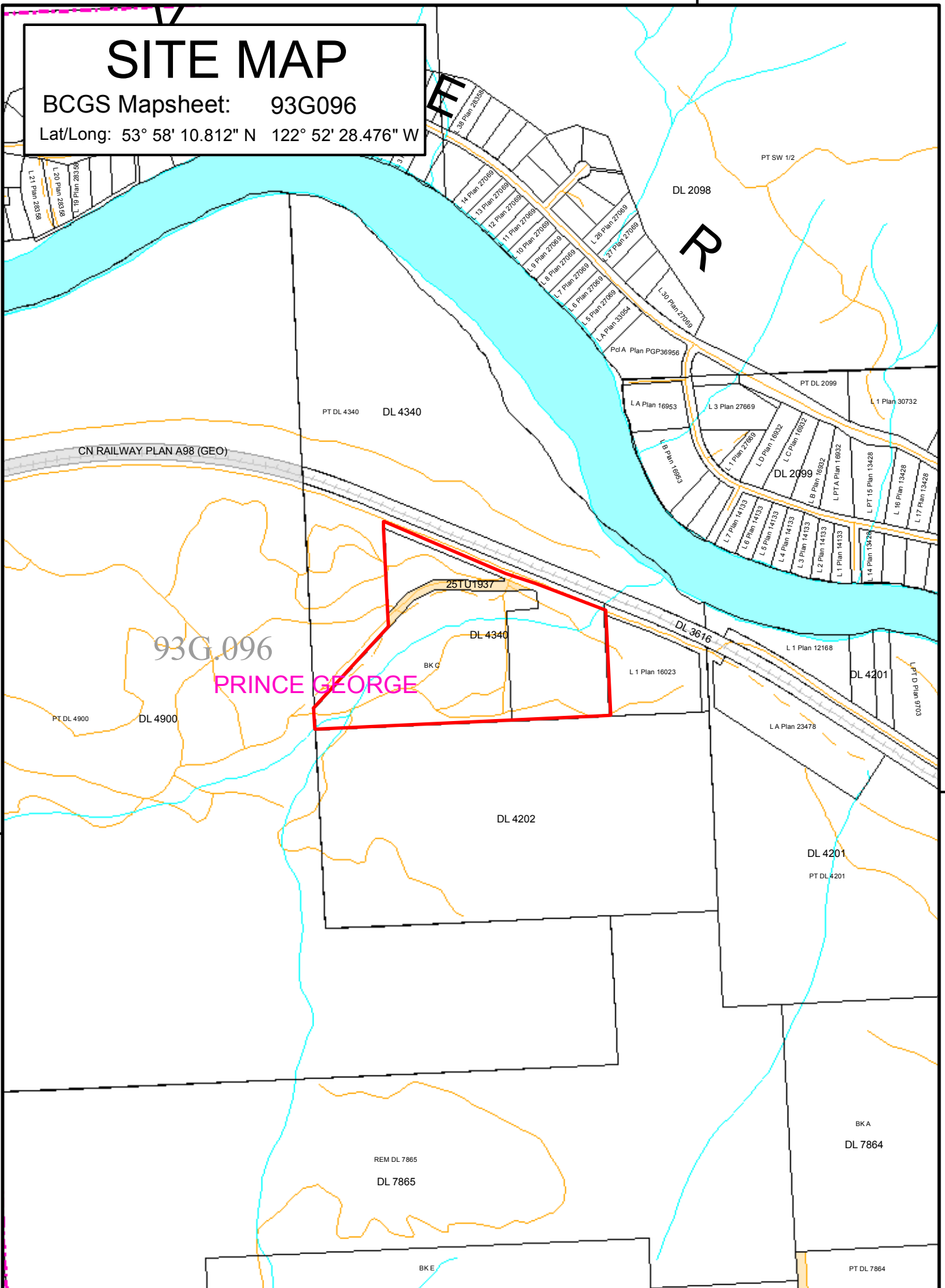


122°52'0"W

SITE MAP

BCGS Mapsheet: 93G096

Lat/Long: 53° 58' 10.812" N 122° 52' 28.476" W



53°58'0"N

53°58'0"N

File Number: 7404233

Site # 1 of 1 - TENURE

Area = 15.8 Ha.

TYPE: LEASE

PURPOSE: INSTITUTIONAL

SUBTYPE: STANDARD LEASE

SUBPURPOSE: LOCAL/REGIONAL PARK

LOCATION: W PRINCE GEORGE

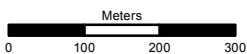
ORTHO PHOTO YEAR: N/A

Produced by
 Ministry of Forests, Lands &
 Natural Resources Operations
 Northern Service Centre
 FrontCounterBC
 Date: January 10, 2017

Scale: 1:10,000

* if printed on 8.5X14 page

Projection: BC Albers
Datum: NAD 83



Legend

- Crown Land Application
- Primary Survey Parcel
- Subdivision
- Municipality
- Surveyed Rights of Way**
 - Surveyed Road R/W
 - Gas/Oil R/W District Lot
 - Power Transmission R/W
 - Gas/Oil R/W
 - Telecom R/W District Lot
 - Miscellaneous R/W
- Transportation Corridors**
 - Highway
 - Railway
 - Surveyed Road R/W
- Protected Areas**
 - Provincial Park
 - Protected Area
 - OIC Ecological Reserve
 - Recreation Area
- Base Mapping Features (20K)**
 - River or Stream
 - River or Stream - Dry
 - Lake
 - Reservoir - Definite
 - Glacier/Icefield
 - Contour - 20m interval
- Transportation - Lines (20K)**
 - Airfield
 - Road
 - Forest Service Road
 - Road Permit
 - Trail
 - Rail Line

All measurements are approximate.

