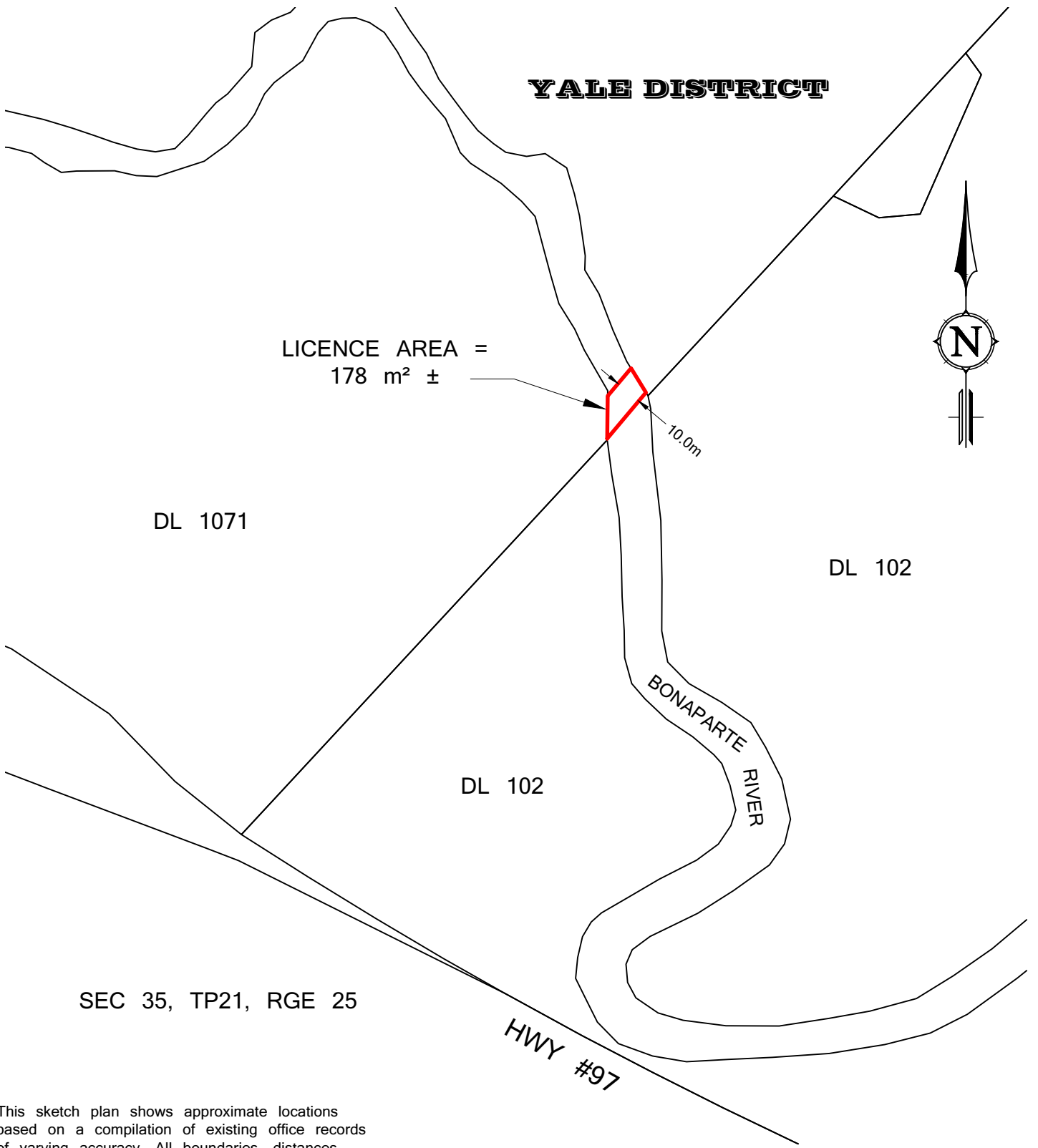
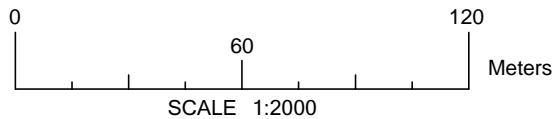


SKETCH PLAN OF PROPOSED STATUTORY RIGHT OF WAY OVER A PORTION OF THE BONAPARTE RIVER BEING CROWN LAND KDYD.

BCGS 921084



This sketch plan shows approximate locations based on a compilation of existing office records of varying accuracy. All boundaries, distances and areas are unreliable for establishing land tenure unless verified by a field survey conducted by a British Columbia Land Surveyor.



Plot Date: February 15, 2017