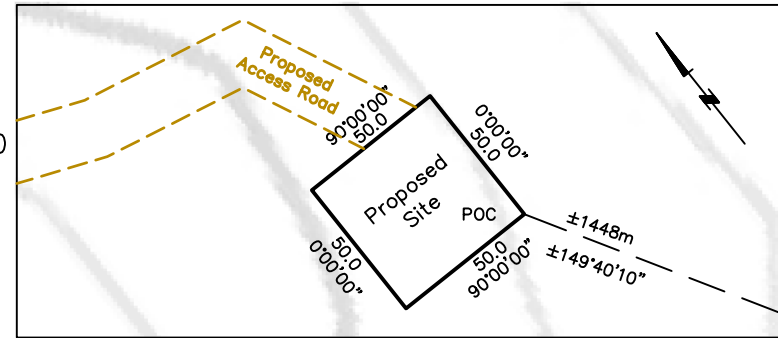


Metes and Bounds Description:

Beginning at the NE corner of Sec 14, Tp 18, R 11, W6M, thence 149°40'10" for a distance of 1448m, more or less, to the point of commencement (POC), Thence 0° for a distance of 50m, Thence 270° for a distance of 50m, Thence 180° for a distance of 50m, Thence 90° for a distance of 50m, to the point of commencement containing an area of 0.25 hectares, more or less.

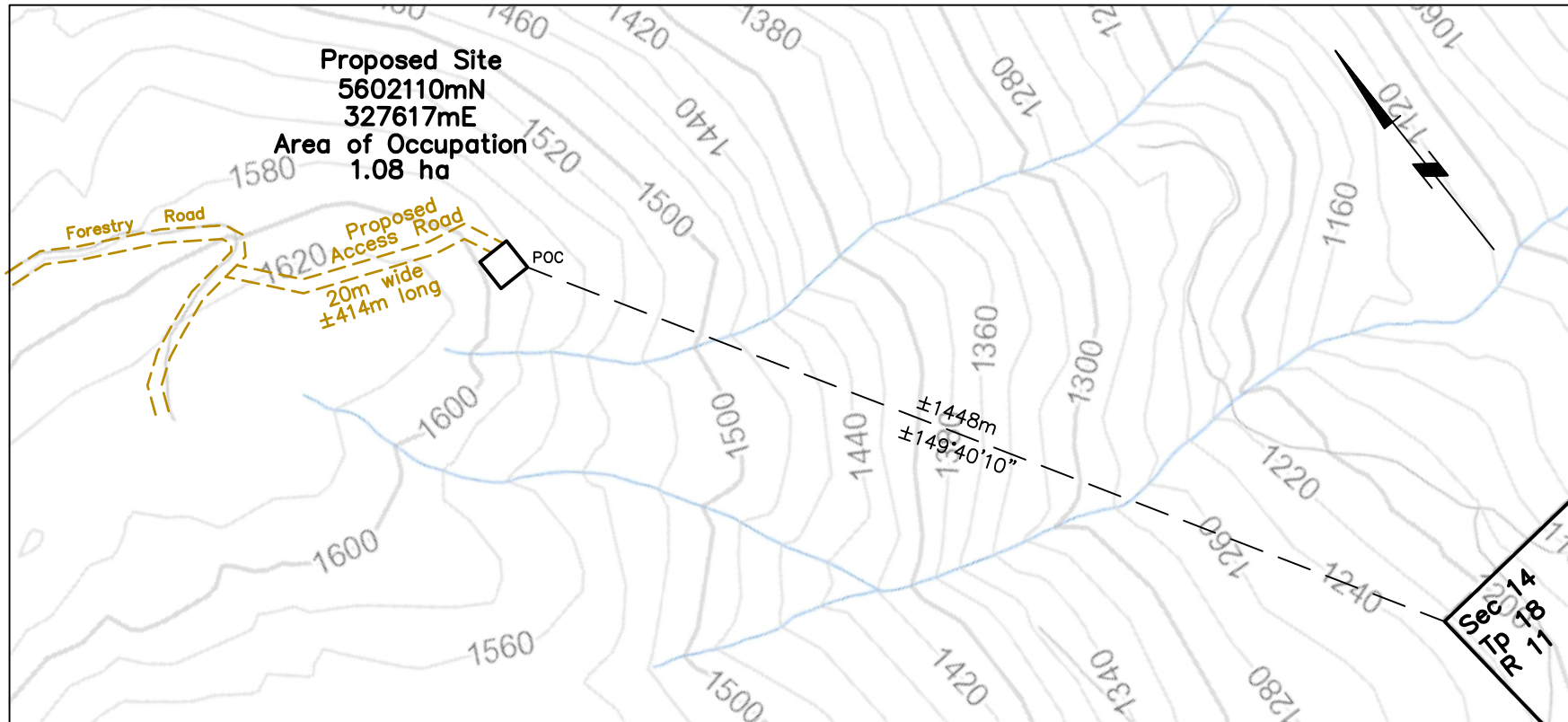
Detail

Scale 1:2500



Location Plan

Scale 1:10,000



Sketch Plan to Accompany Application for Crown Tenure over Unsurveyed Crown Land for Proposed Site in the Vicinity of Salmon Valley Road

Note: Bearings & coordinates refer to UTM Zone 11N NAD83(CSRS). Contours are approximate and are from TRIM data.

BROWNE JOHNSON LAND SURVEYORS
B.C. AND CANADA LANDS
SALMON ARM, B.C. Ph.250-832-9701
File: 94-17 May 25, 2017