

125°40'0"W

125°38'0"W

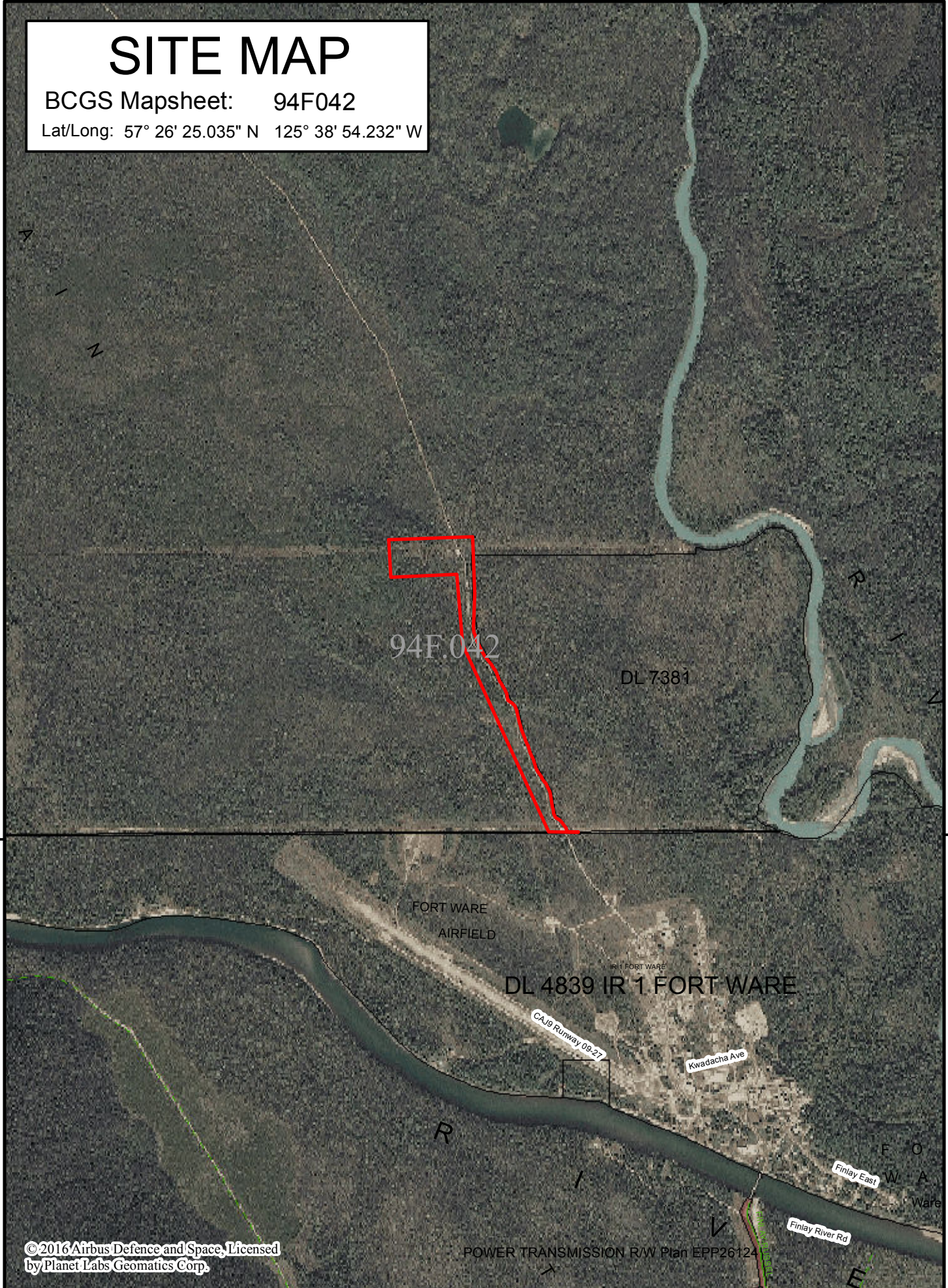
# SITE MAP

BCGS Mapsheet: 94F042

Lat/Long: 57° 26' 25.035" N 125° 38' 54.232" W

57°26'0"N

57°26'0"N



© 2016 Airbus Defence and Space, Licensed by Planet Labs Geomatics Corp.

## File Number: 7409252

Site # 1 of 1 - TENURE

Area = 12.72 Ha.

TYPE: LICENCE

PURPOSE: COMMUNITY

SUBTYPE: LICENCE OF OCCUPATION

SUBPURPOSE: MISCELLANEOUS

LOCATION: FORT WARE

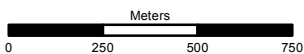
IMAGERY: Spot 6/7 - 2014-2015

Produced by  
Ministry of Forests, Lands &  
Natural Resource Operations  
Northern Service Centre  
FrontCounterBC  
Date: October 30, 2017

Scale: 1:20,000 \*

\* if printed on 8.5X14 page

Projection: BC Albers  
Datum: NAD 83



### Legend

- Crown Land Application
- Primary Survey Parcel
- Subdivision
- Municipality
- Surveyed Rights of Way**
  - Surveyed Road R/W
  - Gas/Oil R/W District Lot
  - Power Transmission R/W
  - Gas/Oil R/W
  - Telecom R/W District Lot
  - Miscellaneous R/W
- Transportation Corridors**
  - Highway
  - Railway
  - Surveyed Road R/W
- Protected Areas**
  - Provincial Park
  - Protected Area
  - OIC Ecological Reserve
  - Recreation Area
- Base Mapping Features (20K)**
  - River or Stream
  - River or Stream - Dry
  - Lake
  - Reservoir - Definite
  - Glacier/Icefield
  - Contour - 20m interval
- Transportation - Lines (20K)**
  - Airfield
  - Road
  - Forest Service Road
  - Road Permit
  - Trail
  - Rail Line

All measurements are approximate.