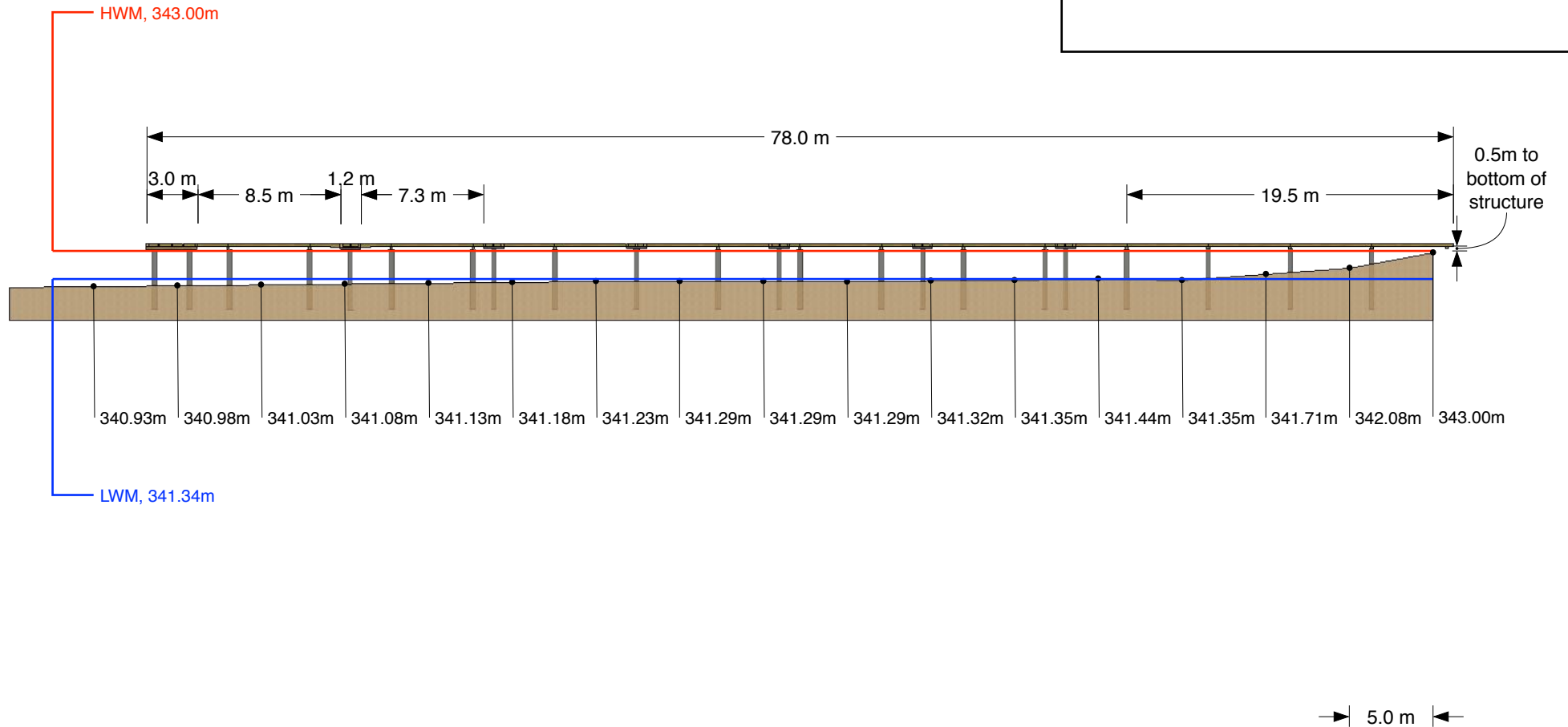


Notes

* Drive bearing piles to a minimum 5 meter depth unless solid bearing is reached at a lesser depth and approved by the departmental representative in writing.



Kelowna Shores
2900 Abbott St.
Kelowna, B.C.

#7 - 2322 Dominion Rd.
West Kelowna, BC
V1Z 2W8



Ph: 778-755-6600
Fx: 778-755-6601
Web: burtonpiledriving.com

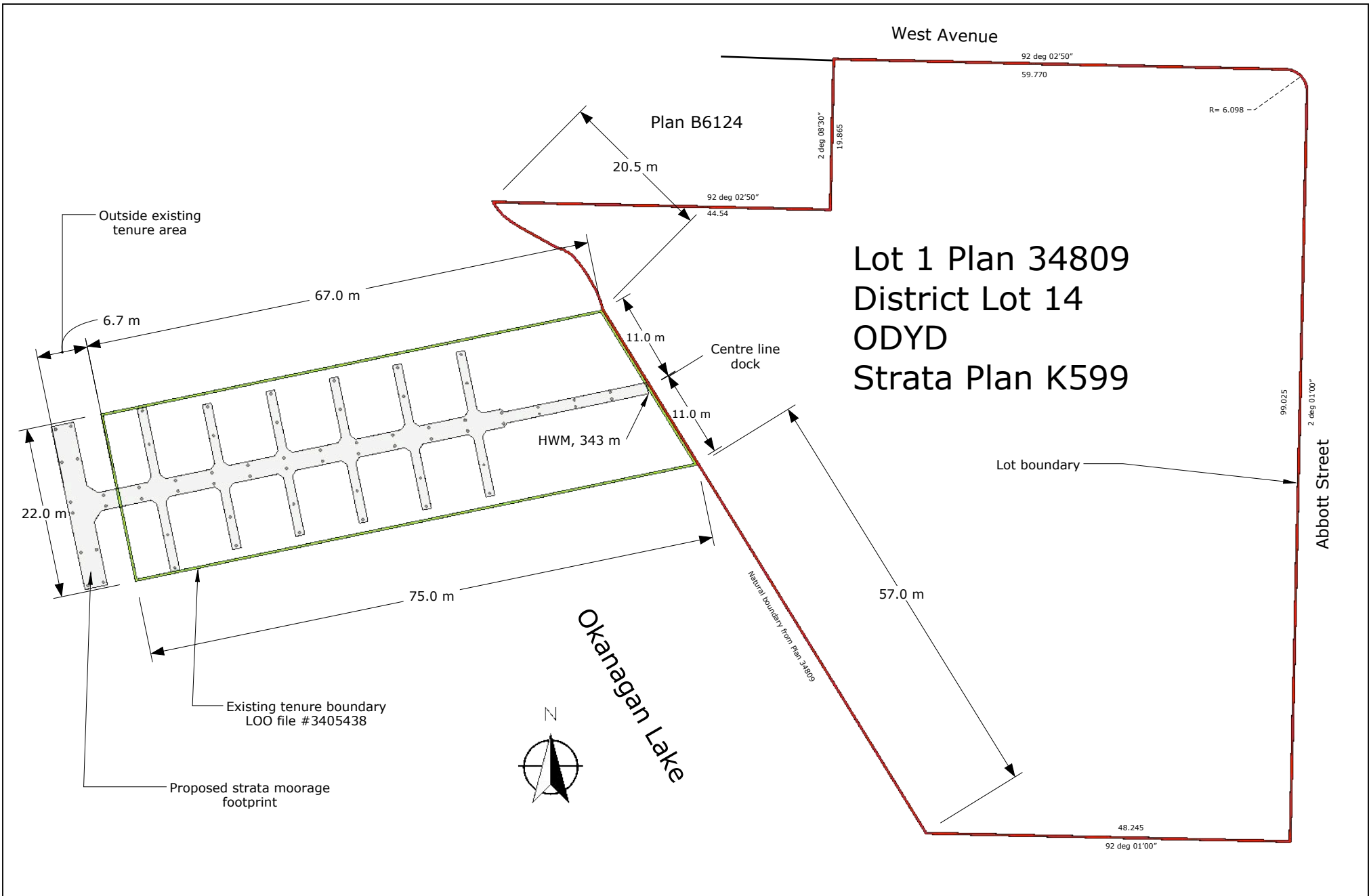
Specific Permission - Profile View

REVISIONS

REVISIONS		REMARKS
09/11/17		Drawing created
11/07/17		Drawing revised

2017

BMPD



Kelowna Shores
2900 Abbott St.
Kelowna, B.C.

#7 - 2322 Dominion Rd.
West Kelowna, BC
V1Z 2W8



Ph: 778-755-6600
Fx: 778-755-6601
Web: burtonpiledriving.com

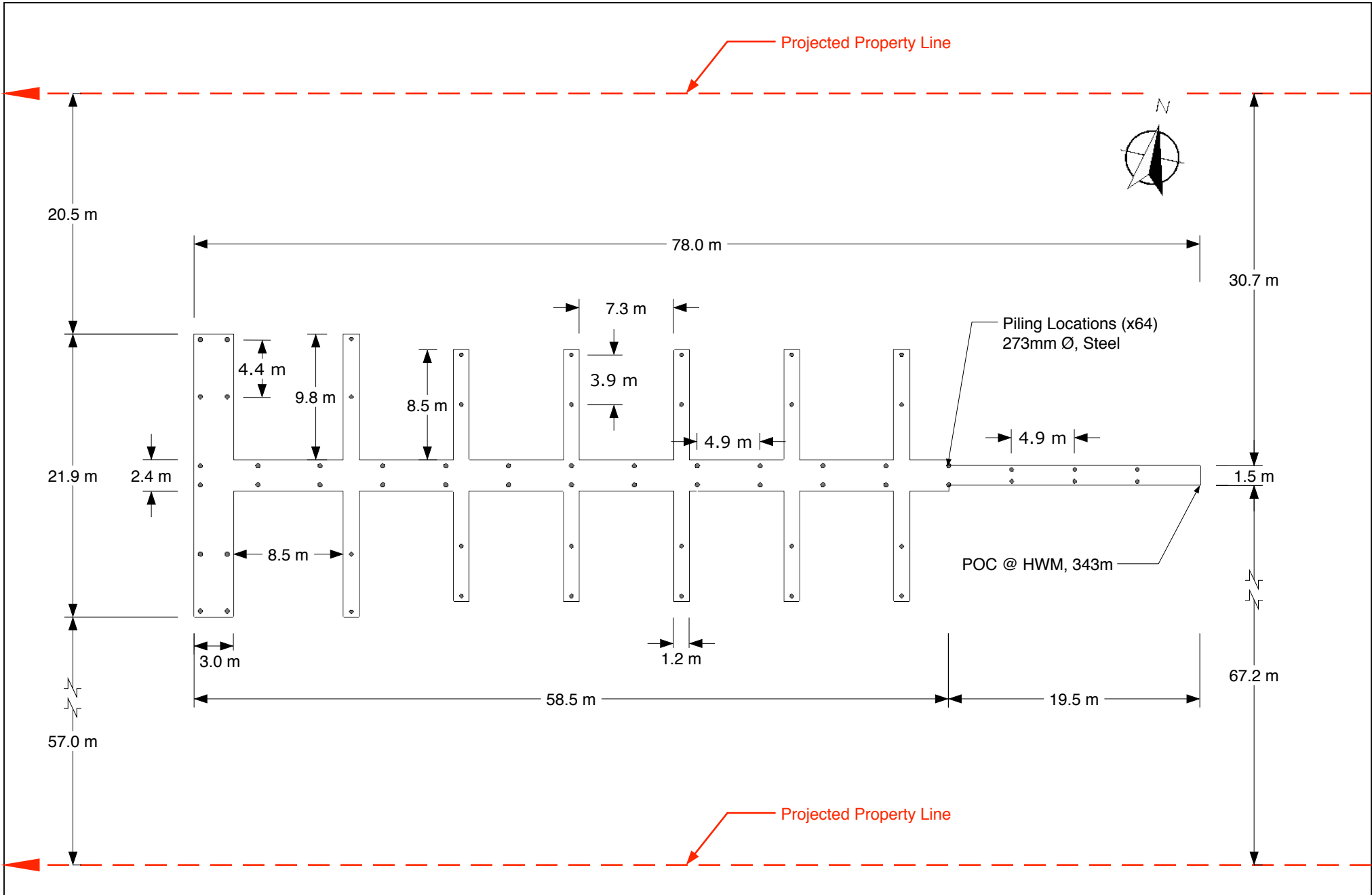
Strata Plan K599 - Lot overview and dock tenure location

REVISIONS

DATE	DESCRIPTION
22/01/18	Drawing created

2017

BMPD



Kelowna Shores
2900 Abbott St.
Kelowna, B.C.

#7 - 2322 Dominion Rd.
West Kelowna, BC
V1Z 2W8



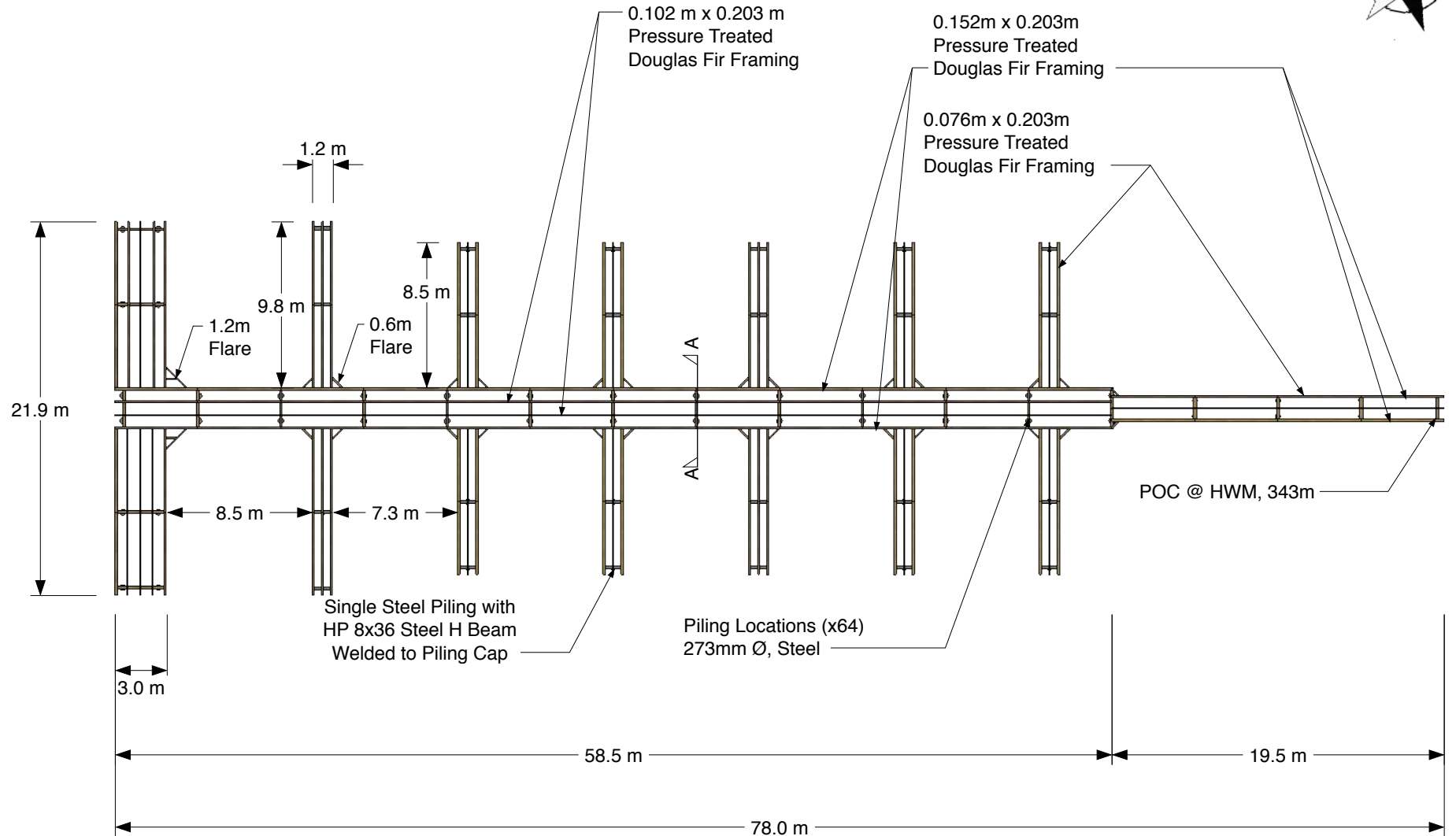
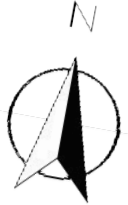
Ph: 778-755-6600
Fx: 778-755-6601
Web: burtonpiledriving.com

Specific Permission - Plan View

REVISIONS

REVISIONS		REMARKS
08/14/17		Drawing created
11/07/17		Drawing revised

2017
BMPD



Kelowna Shores
2900 Abbott St.
Kelowna, B.C.

#7 - 2322 Dominion Rd.
West Kelowna, BC
V1Z 2W8



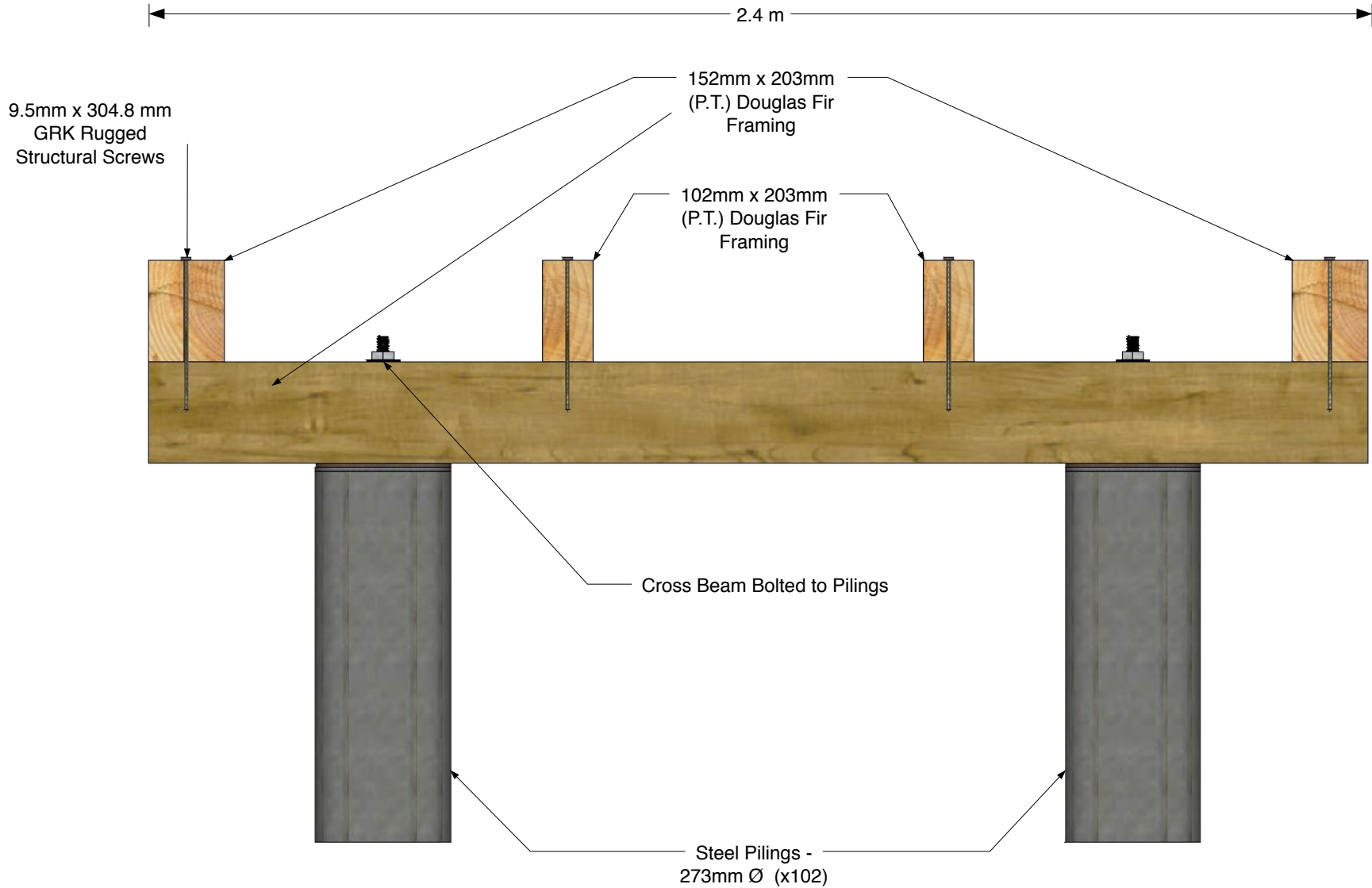
Ph: 778-755-6600
Fx: 778-755-6601
Web: burtonpiledriving.com

Specific Permission - Frame Plan

REVISIONS

REVISIONS		REMARKS
08/14/17		Drawing created
11/07/17		Drawing revised

BMPD 2017



Kelowna Shores
2900 Abbott St.
Kelowna, B.C.

#7 - 2322 Dominion Rd.
West Kelowna, BC
V1Z 2W8



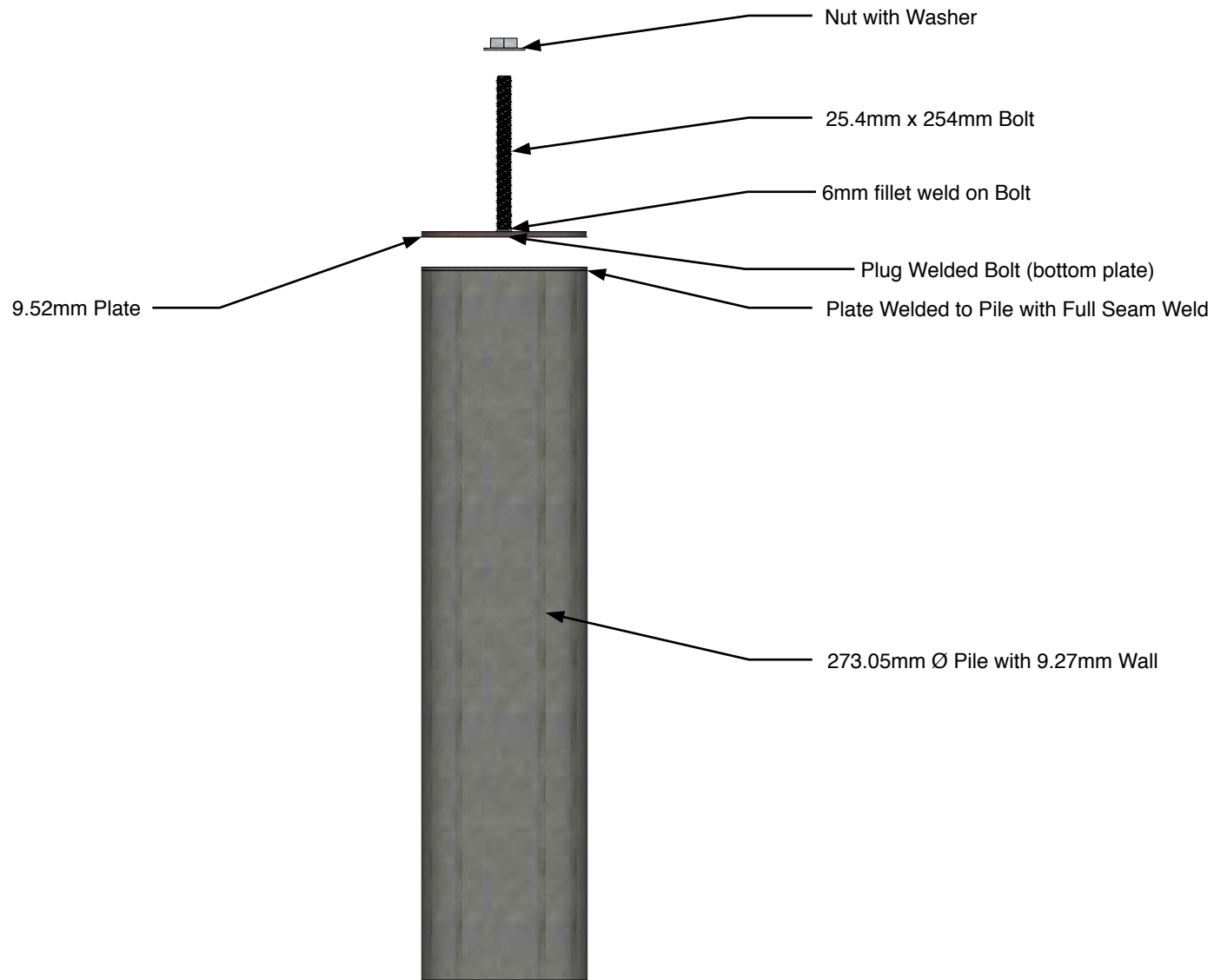
Ph: 778-755-6600
Fx: 778-755-6601
Web: burtonpiledriving.com

Cross Section A-A

REVISIONS

REVISIONS		REMARKS
09/14/17		Drawing created

BMPD 2017



Kelowna Shores
2900 Abbott St.
Kelowna, B.C.

#7 - 2322 Dominion Rd.
West Kelowna, BC
V1Z 2W8



Ph: 778-755-6600
Fx: 778-755-6601
Web: burtonpiledriving.com

Steel Pile Connection Detail

REVISIONS

REVISIONS		REMARKS
09/14/17		Drawing created

2017

BMPD