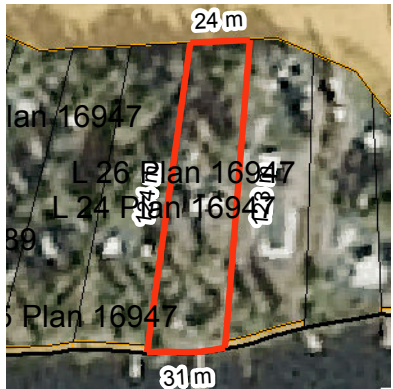
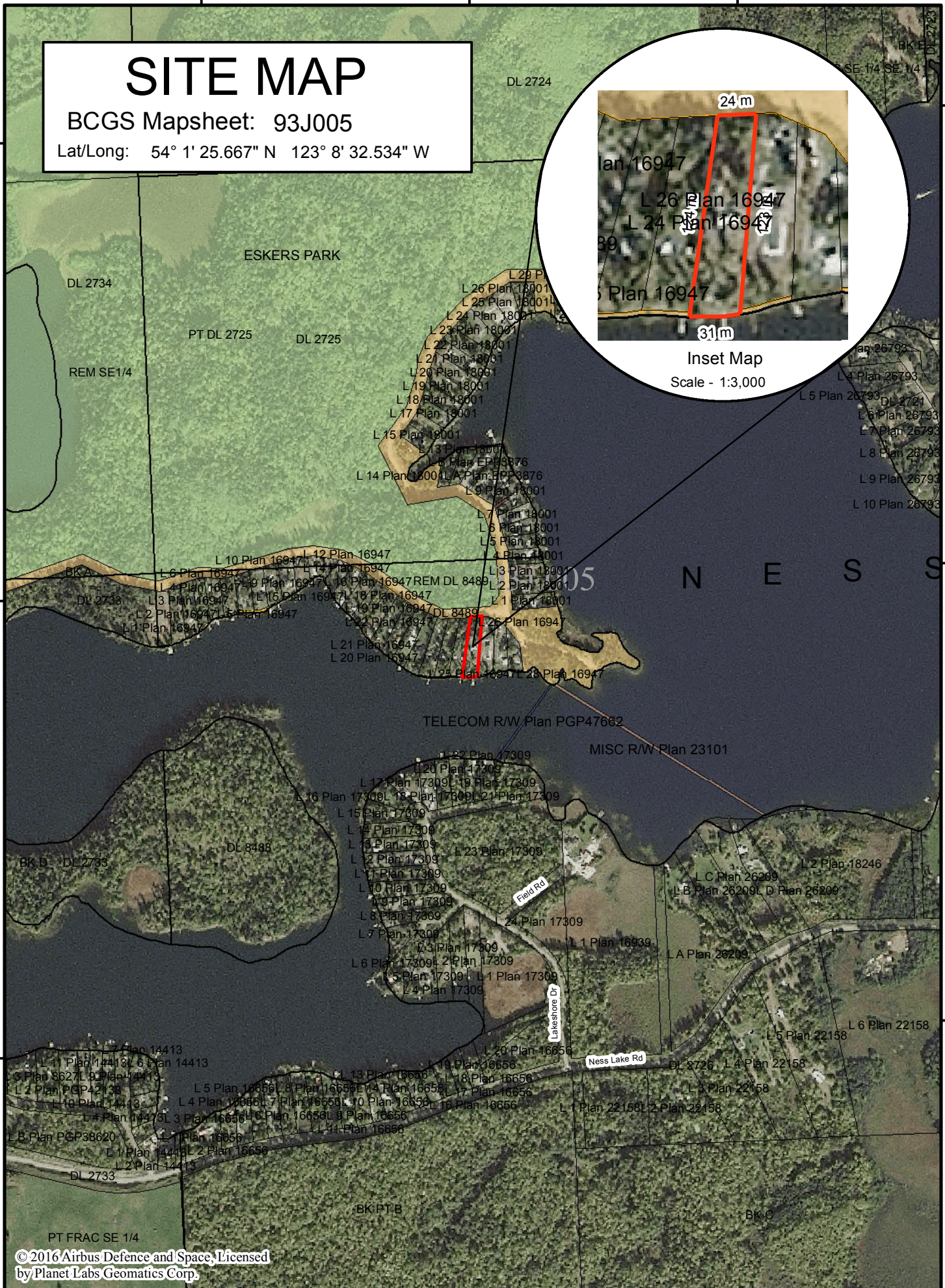


SITE MAP

BCGS Mapsheet: 93J005

Lat/Long: 54° 1' 25.667" N 123° 8' 32.534" W



Inset Map
Scale - 1:3,000

© 2016 Airbus Defence and Space, Licensed by Planet Labs Geomatics Corp.

File Number: 0278339

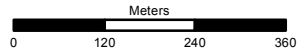
Site # 1 of 1 - APPLICATION Area = 0.33 Ha.

TYPE: CROWN GRANT PURPOSE: RESIDENTIAL
SUBTYPE: DIRECT SALE SUBPURPOSE: RECREATIONAL RESIDENTIAL
LOCATION: NESS LAKE IMAGERY: Spot 6/7 - 2014-2015

Produced by
 Ministry of Forests, Lands &
 Natural Resource Operations
 & Rural Development
 Northern Service Centre
 FrontCounterBC
 Date: March 16, 2018

Scale: 1:10,000 *
 * if printed on 8.5X14 page

Projection: BC Albers
 Datum: NAD 83



Legend

- Crown Land Application
- Primary Survey Parcel
- Subdivision
- Municipality
- Surveyed Rights of Way**
 - Surveyed Road R/W
 - Gas/Oil R/W District Lot
 - Power Transmission R/W
 - Gas/Oil R/W
 - Telecom R/W District Lot
 - Miscellaneous R/W
- Transportation Corridors**
 - Highway
 - Railway
 - Surveyed Road R/W
- Protected Areas**
 - Provincial Park
 - Protected Area
 - OIC Ecological Reserve
 - Recreation Area
- Base Mapping Features (20K)**
 - River or Stream
 - River or Stream - Dry
 - Lake
 - Reservoir - Definite
 - Glacier/Icefield
 - Contour - 20m interval
- Transportation - Lines (20K)**
 - Airfield
 - Road
 - Forest Service Road
 - Road Permit
 - Trail
 - Rail Line

All measurements are approximate.

